

## ORIGINAL RESEARCH

## A Systematic Review and Meta-Analysis of Food Insecurity and Dyslipidemia

Daniel J. Arenas, PhD, MD, Sourik Beltrán, MD, MBE, Canada Montgomery, Marissa Pharel, Itzel Lopez-Hinojosa, MD, Gilberto Vilá-Arroyo, DPM, and Horace M. DeLisser, MD

**Purpose:** There is considerable interest in the association between food insecurity (FIS) and various cardiovascular risk factors such as dyslipidemia. Although the association between FIS and dyslipidemia has been studied across various methodologies and populations, there is no comprehensive systematic review and meta-analysis of these data.

**Methods:** A systematic literature search was conducted. Cross-sectional peer-review studies assessing the association between FIS and dyslipidemia were identified. Data extracted included population characteristics, study sizes, covariates explored, and laboratory assessments of dyslipidemia. Effect sizes were extracted or calculated, then synthesized across studies using a random effect model, and the heterogeneity, publication bias, and subgroup dependence for each meta-analysis were assessed.

**Results:** For adults, meta-analysis demonstrated no significantly elevated odds for FIS individuals to have a concomitant abnormal lipid measurement. Covariate-unadjusted analysis of standardized mean differences showed no significant differences in lipid measurements between food-insecure and food-secure individuals. In contrast to quantitative laboratory results, food-insecure patients were more likely to self-report previous diagnoses of dyslipidemia.

**Conclusions:** Although current data do not suggest an association between FIS and dyslipidemia, more longitudinal studies and studies targeting women, children, the elderly, and patients with chronic diseases such as diabetes are needed to further address this issue. (J Am Board Fam Med 2022;35:656–667.)

**Keywords:** Cholesterol, Chronic Disease, Cross-Sectional Studies, Dyslipidemias, Food Insecurity, Hunger, LDL Triglyceride, Risk Factors, Social Determinants of Health

## Background

Food insecurity (FIS) is a complex phenomenon that generally refers to inadequate access to food of sufficient nutritional quality to promote health.<sup>1</sup> FIS can be due to a wide range of factors

including poverty, access to public resources like transportation, and the presence of food deserts.<sup>2–5</sup> It is for this reason FIS has been linked to other important and well-established social determinants of health such as race, income level, housing, disability, and citizenship status.<sup>6–10</sup>

In addition to its relevance to various social determinants of health, multiple mechanisms have been proposed for a link between FIS and cardiovascular disease.<sup>11–14</sup> One possible link is mediated through cardiovascular risk factors such as high blood pressure, diabetes, and dyslipidemia.<sup>12,14</sup> For dyslipidemia, there are at least 2 potentially offsetting effects of FIS on patients' lipid measurements.

This article was externally peer reviewed.

Submitted 17 October 2021; revised 29 December 2021; accepted 5 January 2022.

From Perelman School of Medicine, University of Pennsylvania, Philadelphia, PA (DJA, SB, CM, HMD); Department of Medicine, Massachusetts General Hospital, Boston, Massachusetts, USA (SB); Rush Medical College, Rush University, Chicago, IL (MP); Pritzker School of Medicine, University of Chicago, Chicago, IL (IL-H); Podiatric Residency Program, Tower Health, West Reading, PA (GV-A).

Funding: none.

**Conflict of interest:** The authors have no conflicting or competing interests to declare.

**Corresponding author:** Horace M. DeLisser, MD, Academic Programs, Room 644, Jordan Medical Education Center, 6th

Floor, Building 421, 3400 Civic Center Blvd, Philadelphia, PA 19104-5162 (E-mail: [delisser@pennmedicine.upenn.edu](mailto:delisser@pennmedicine.upenn.edu)).

The first is that FIS leads to nutritionally poor diets (ie, increased intake of foods high in saturated or trans fats and/or low in fiber) that may be further complicated or exacerbated by cultural and socioeconomic factors.<sup>15–17</sup> In contrast, a subset of severely food-insecure patients may consume overall fewer calories than their food-secure counterparts, which may lead to improved lipid measurements.<sup>18,19</sup> It remains unclear if the strength of such associations (effect sizes such as odds ratios [ORs] or standardized mean differences [SMDs]) is either measurable or clinically significant.

As both FIS and dyslipidemia each have high prevalence<sup>5,20–27</sup> and well-documented deleterious health effects,<sup>28–38</sup> identifying an association between the 2 factors could have relevance to clinicians. As a result, there has been considerable effort in the literature to measure the possible association between FIS and dyslipidemia in a number of cross-sectional studies spanning diverse populations and various lipid markers such as total cholesterol (TC), low-density lipoprotein (LDL), triglycerides (TG), and high-density lipoproteins (HDL).<sup>39</sup> However, there has yet to be a comprehensive systematic review and meta-analysis to synthesize these results.

## Methods

### Data Sources

This systematic review and meta-analysis is the result of an initially broad, systematic literature search investigating the link between FIS and cardiometabolic risk factors. The initial search was registered in Prospero as of January 28, 2020 (registration CRD42020149560) and included all peer-reviewed human studies involving any population, any methodology, and any publication year in 4 databases: PubMed, Scopus, Embase, and Web of Science. The initial search took place on September 9, 2019 and involved the Medical Subject Headings of FIS with hypertension, diabetes, metabolic syndrome, and dyslipidemia.

### Study Selection

Every abstract obtained in the initial search described above was randomized and screened using Abstrackr<sup>40,41</sup>; 4 authors inspected for relevance. Relevance was defined as: (1) the study investigated FIS or a comparable concept, (2) the study

also investigated hypertension, diabetes, metabolic syndrome, or dyslipidemia, (3) the study reported quantitative primary data, and (4) the study was peer reviewed and available in English. Articles that were excluded by all 4 authors were discarded; those with approval from at least 1 author were further discussed and reviewed by an additional author. Interrater reliability was assessed for the entire group and permutations of reviewer pairs.<sup>42</sup> Studies that satisfied the above conditions were then screened by at least 2 authors to identify those that contained primary data exploring direct associations between FIS and dyslipidemia; studies that contained data only through a third variable were discarded. Disagreements were revisited by an additional author. Included studies were then assessed through the AXIS tool for quality assessment of cross-sectional studies<sup>43</sup> to assess for individual-study biases.

### Data Extraction

Every study identified that met the above inclusion criteria underwent manual extraction of study population characteristics, sample size, study design, measurements, and all outcomes related to FIS and dyslipidemia. Extracted data were grouped by the measured outcomes available from each study in its relationship to FIS: LDL, HDL, TC, and TG. Based on the available primary data, meta-analyses were possible on ORs and SMDs (specifically Hedges' *g*). Effect sizes were extracted by 1 author and, when not reported in a study, were calculated manually using the study's reported primary data. Regarding studies that separated outcomes by FIS categories (ie, mild vs severe FIS), the primary data were either pooled to calculate 1 effect size or, if applicable, reported effect sizes were combined using the random effects (RE) model. More information on how studies were grouped can be found in the Online Appendix figures and tables.

### Data Synthesis and Meta-Analysis

Meta-analyses were conducted only when 3 or more effect sizes were available from separate studies on a specific outcome measure. Analysis was conducted using the metafor package in R based on the RE size model, which does not assume sampled populations have identical probability distributions.<sup>44</sup> Meta-analysis results were calculated using the DerSimonian-Laird estimator.<sup>45</sup> For OR meta-analysis, the logarithm was used as the effect size.

For each meta-analysis, study heterogeneity was calculated via the total variance ( $Q$ ), the degrees of freedom ( $df$ ), and the  $I^2$  statistic.<sup>46</sup> Publication bias was evaluated by the Begg and Mazumdar rank correlation test for funnel plot asymmetry as well as Kendall's  $\tau$  in Egger's regression test.<sup>47,48</sup>

## Results

### Study Characteristics

A total of 787 abstracts were reviewed by 4 authors, with significant group interrater agreement: Fleiss kappa = 0.68 [95% CI, 0.66, 0.71,  $n = 4$ ] with each user having permuted interrater agreements above 0.6. One hundred ninety-six abstracts were then full-text evaluated, and 32 manuscripts were found to have primary data exploring the association between dyslipidemia and FIS (Online Appendix Figure 1). All studies identified in a previous 2017 preliminary nonmeta-analysis review were also discovered on this review.<sup>39</sup> All studies had either a cross-sectional design or contained data specific to FIS that corresponded to baseline characteristics from a cohort study. Most studies were from the US, which had the highest number of patients; Malaysia and Iran were the other most represented countries.

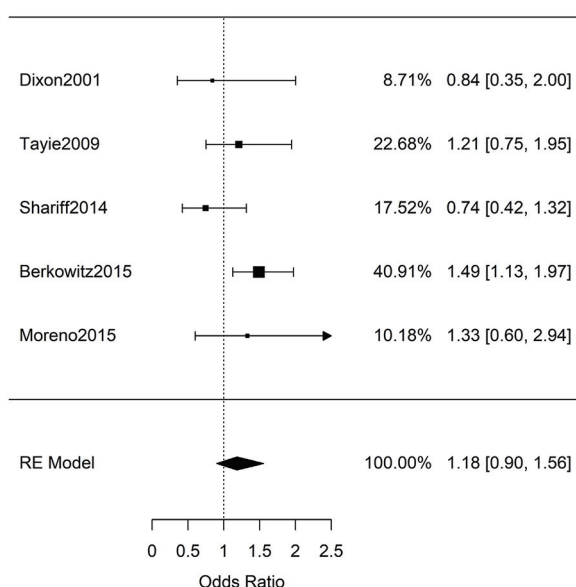
Twenty-five studies presented data on adults,<sup>12,19,49–71</sup> 5 presented data on children,<sup>72–76</sup>

and 2 studies had data on both.<sup>64,77</sup> Twenty-six studies presented lab measurements for 1 (or a combination) of LDL, TG, TC, or HDL; 5 studies exclusively used only self-reports of previous diagnoses of dyslipidemia; 1 study used general nonspecific diagnosis of hyperlipidemia from chart review.<sup>75</sup> The characteristics of each study are presented in Online Appendix Tables 1–11. These tables divide studies based on child/adult status, dyslipidemia measurements, and choice of effect size (OR, SMD). Each table indicates where in the manuscript the original information was located and whether we calculated the effect sizes ourselves by extracting primary data. We noted manuscripts with overlapping patient data and those for which we could not extract nor calculate effect sizes.

For children, the few identified studies (Online Appendix Tables 9 and 10) did not have sufficient overlap to perform any meta-analysis. In short, the data from some studies suggested associations between FIS and specific dyslipidemia measurements,<sup>72</sup> while others did not.<sup>64,74,76</sup> One study presented data on both children and adults but was not analyzed due to inability to separate the data from the 2 groups.<sup>77</sup>

In adults, the available literature data allowed for 8 meta-analyses to explore the association of FIS with dyslipidemia: by 4 lab measurements (LDL, HDL, TC, TG) and with 2 different effect sizes

**Figure 1. Meta-analysis of adult studies investigating increased odds of elevated low-density lipoprotein (LDL) for food-insecure patients. Synthesis of the 5 studies resulted in a nonsignificant combined odds ratio of 1.18 [95% CI, 0.90–1.56,  $n = 22,746$ ,  $Q(df = 4) = 5.5$ ,  $I^2 = 27\%$ ].**



(OR and SMD). As some studies had partially overlapping data (depending on population and/or measurement modality and reporting), the total number of manuscripts and sample size used for each meta-analysis will be discussed in the subsections below.

### Results of Individual Studies and Synthesis of Results by Dyslipidemia Measurement

#### LDL

We first analyzed studies that explored the association between food insecurity and elevated LDL measurements. The 5 studies ( $n = 22,746$ ) that reported the adjusted ORs were combined for meta-analysis in Figure 1. Synthesis of the results revealed no significant association between FIS and elevated LDL:  $OR_{LDL} = 1.18$  [95% CI, 0.90–1.56,  $n = 22,746$ ,  $Q(df=4) = 5.5$ ,  $I^2 = 27\%$ ]. All of these studies adjusted for various covariates such as age, sex, gender, and, in some cases, body mass index (BMI) or adiposity (Online Appendix Table 1). One study was excluded from the meta-analysis above as it involved overlapping National Health and Nutrition Examination Survey data (Online Appendix Table 1).<sup>51</sup>

Five additional studies ( $n = 1,143$ ) reported sufficient data to calculate the SMD in LDL levels between food-insecure and food-secure adults (Online Appendix Table 2). Although these data

were not adjusted for covariates, synthesis also resulted in no significant difference in LDL levels between food-secure and food-insecure patients:  $g_{LDL} = -0.02$  [95% CI, -0.28, 0.25,  $n = 1143$ ,  $Q(df=4) = 17$ ,  $I^2 = 76\%$ ] (Figure 2). Lastly, the study on veterans with diabetes by Smalls et al also did not show a significant association between LDL and FIS,<sup>58</sup> but it was not added to the meta-analysis due to lack of primary data for OR or Hedges  $g$ .

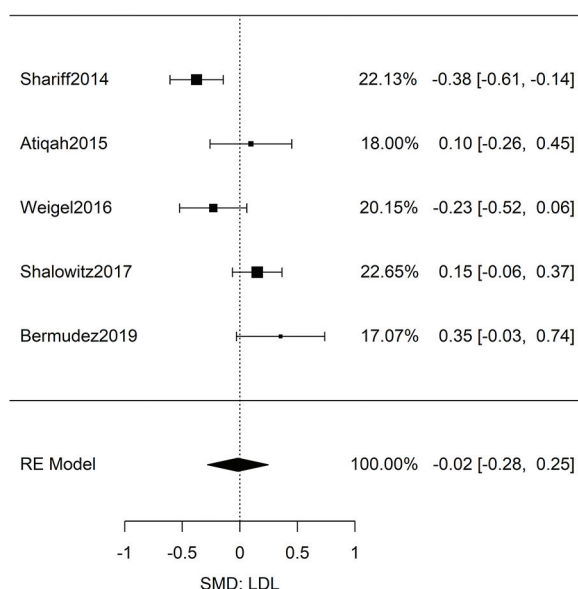
#### HDL

Synthesis by meta-analysis of the 6 nonoverlapping studies ( $n = 28,557$ ) (Online Appendix Table 3) exploring FIS and low levels of HDL resulted in a nonsignificant result:  $OR_{HDL} = 1.02$  [95% CI, 0.98, 1.06,  $n = 28,557$ ,  $Q(df=5) = 2.7$ ,  $I^2 = 0\%$ ] (Figure 3). Not only was the synthesized OR close to 1, but the heterogeneity ( $I^2 = 0$ ) was lower than that expected from random chance. Synthesis of the 6 HDL studies (Online Appendix Table 4) with standardized mean data resulted in a nonsignificant difference in HDL levels between food-secure and food-insecure adults:  $g_{HDL} = -0.01$  [95% CI, -0.07, 0.04,  $n = 7,096$ ,  $Q(df=5) = 3.20$ ,  $I^2 = 0\%$ ] (Figure 4).

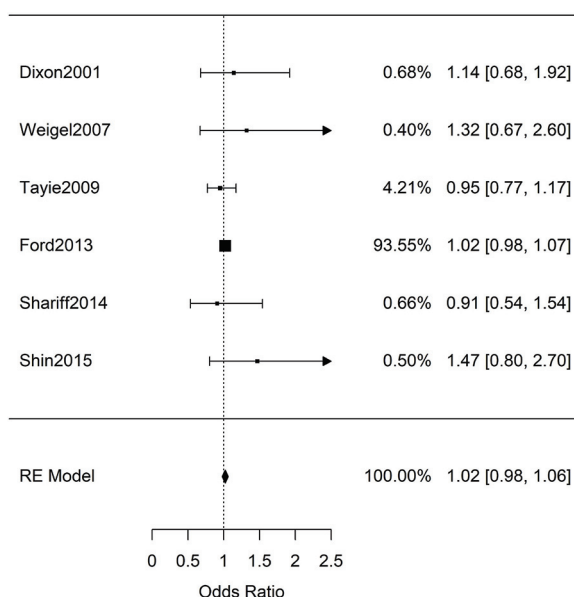
#### Total Cholesterol

Meta-analysis of 6 studies ( $n = 28,225$ ) (Online Appendix Table 5) showed similar odds for elevated

**Figure 2. Meta-analysis of adult studies investigating food insecurity and low-density lipoprotein (LDL) measurement. Hedges'  $g$ , standardized mean differences with a small size correction, were calculated from the primary data of the 5 studies. Meta-analysis resulted in a nonsignificant effect:  $g_{LDL} = -0.02$  [95% CI, -0.28, 0.25,  $n = 1,143$ ,  $Q(df=4) = 17$ ,  $I^2 = 76\%$ ].**



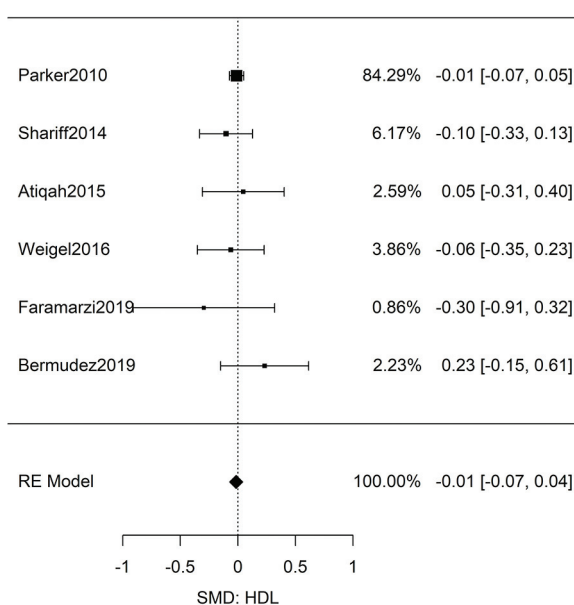
**Figure 3. Meta-analysis of adult studies investigating increased odds of low high-density lipoprotein (HDL) for food-insecure patients. Synthesis of the 6 studies resulted in a nonsignificant combined odds ratio of  $OR_{HDL} = 1.02$  [95% CI, 0.98, 1.06,  $n = 28,557$ ,  $Q(df = 5) = 2.7$ ,  $I^2 = 0\%$ ].**



cholesterol between food-insecure and food-secure patients:  $OR_{TC} = 1.00$  [95% CI, 0.95, 1.05,  $n = 28,225$ ,  $Q(df = 5) = 4.3$ ,  $I^2 = 0\%$ ]. The results (Figure 5) were homogeneous as evidenced by the calculated  $I^2$ . The study excluded from this meta-

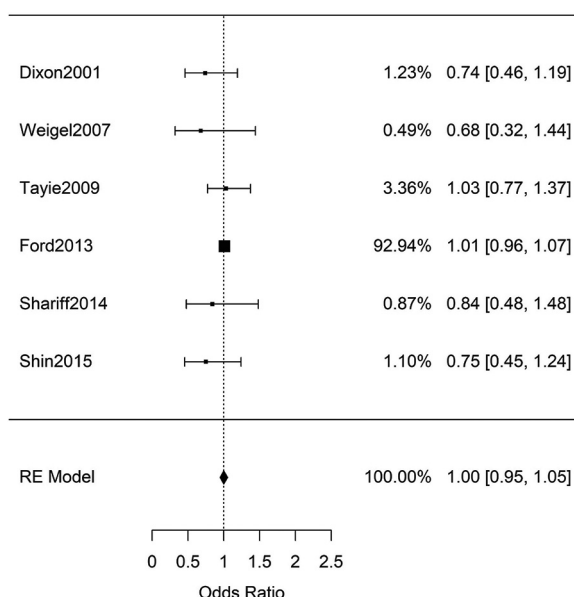
analysis, due to overlapping data, also reported no significant association.<sup>61</sup> Analysis of SMDs of 5 studies (Online Appendix Table 6) also showed no significant association in the TC levels between food-insecure and food-secure patients:  $g_{TC} = 0.02$

**Figure 4. Meta-analysis of adult studies investigating food insecurity and high-density lipoprotein (HDL) levels. Hedges'  $g$ , standardized mean differences with a small size correction, were calculated from the primary data of the 6 studies. Meta-analysis resulted in a nonsignificant effect:  $g_{HDL} = -0.01$  [95% CI, -0.07, 0.04,  $n = 7,096$ ,  $Q(df = 5) = 3.20$ ,  $I^2 = 0\%$ ].**





**Figure 5. Meta-analysis of adult studies investigating increased odds of elevated total cholesterol for food-insecure patients. Synthesis of the 6 studies resulted in a nonsignificant combined odds ratio of  $OR_{TC} = 1.00$  [95% CI, 0.95, 1.05,  $n = 28,225$ ,  $Q(df = 5) = 4.3$ ,  $I^2 = 0\%$ ].**



[95% CI, -0.20, 0.24,  $n = 1,614$ ,  $Q(df = 4) = 13$ ,  $I^2 = 70\%$ ] (Figure 6).

### Triglycerides

Meta-analysis of 5 studies (Online Appendix Table 7) with adjusted ORs for elevated TG in food-insecure versus food-secure patients yielded  $OR_{TG} = 1.13$  [95% CI, 0.80, 1.61,  $n = 16,107$ ,  $Q(df = 3) = 3.29$ ,  $I^2 = 10\%$ ] (Figure 7). Similarly, analysis of SMDs for 5 studies (Online Appendix Table 8) showed no significant difference between food-secure and food-insecure patients:  $g_{TG} = 0.02$  [95% CI, -0.22, 0.27,  $n = 958$ ,  $Q(df = 4) = 10.2$ ,  $I^2 = 61\%$ ] (Figure 8).

### Self-Reports of Dyslipidemia Diagnosis

As previous meta-analyses studies have shown conflicting results between lab measurements and self-report of chronic conditions,<sup>78</sup> we a priori decided to separate these studies. We identified 5 studies ( $n = 12,888$ ) that used self-reports of previous/current dyslipidemia diagnosis (Online Appendix Table 11). There was sufficient data to synthesize 3 of the studies; the result showed a significant association:  $OR_{self-report} = 1.15$  [95% CI, 1.08, 1.22,  $n = 9,212$ ,  $Q(df = 2) = 2.2$ ,  $I^2 = 10\%$ ] (see Online Appendix Figure 2).

### Risk of Bias within Studies and across Studies

Analysis with the AXIS tool did not identify any study warranted for exclusion. As for publication

bias, none of the funnel plot asymmetry tests yielded positive results. However, it should be emphasized that for such a small number of studies the statistical power for these tests is very small.<sup>79,80</sup>

### Subgroup Analyses

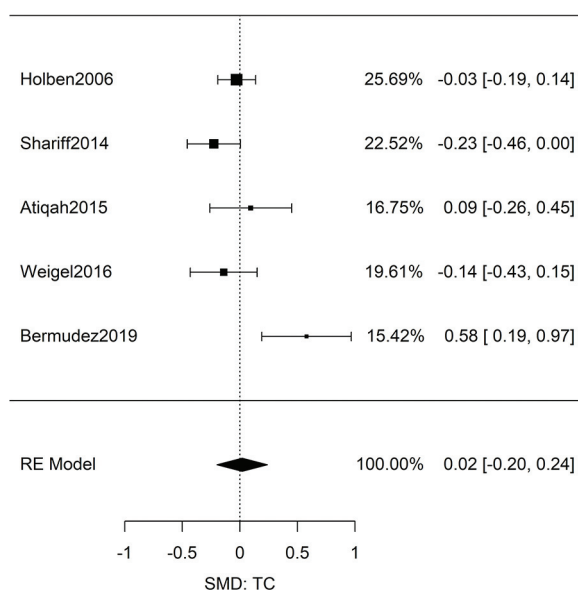
#### Diabetic Patients

One US study specific to the diabetes population reports a significant association between FIS and elevated LDL.<sup>53</sup> Another US study, specific to California and Hispanics, does not report an association between FIS and elevated LDL in their diabetic population.<sup>52</sup> These were the only 2 studies reporting adjusted ORs for the diabetic population and were considered too few for meta-analysis. We also calculated the association specific to this group by extracting primary data from 2 other US studies (at Hartford and Illinois)<sup>56,57</sup>; the analysis did not yield a significant association between FIS and elevated LDL.

#### Female Patients

There were mixed results on whether FIS was associated with higher odds of elevated LDL measurements in women.<sup>49,50</sup> The study on US women by Tayie and Zizza<sup>49</sup> showed significantly higher adjusted odds of elevated LDL in food-insecure compared with food-secure patients; combining

**Figure 6. Meta-analysis of adult studies investigating food insecurity and total cholesterol levels. Hedges' g, standardized mean differences with a small size correction, were calculated from the primary data of the 5 studies. Meta-analysis resulted in a nonsignificant effect:  $g_{TC} = 0.02$  [95% CI, -0.20, 0.24,  $n = 1,614$ ,  $Q(df = 4) = 13$ ,  $I^2 = 70\%$ ].**

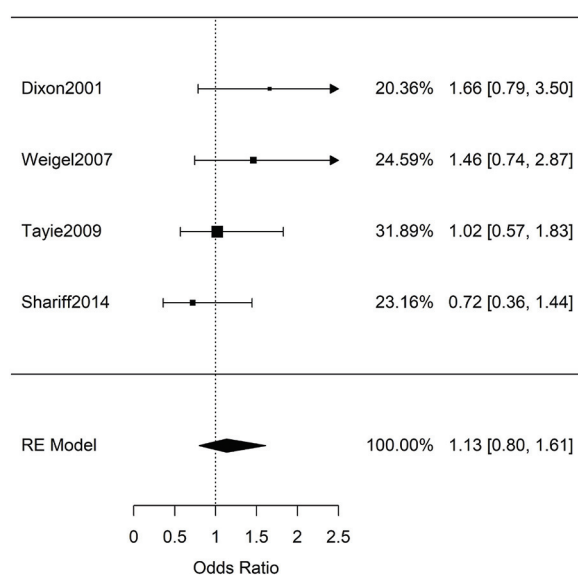


their results from different levels of FIS yielded  $AOR = 1.51$  [95% CI, 1.02, 2.24,  $n = 2,977$ ] (Online Appendix Table 1). In contrast, the study by Shariff et al on Malaysian women did not show a

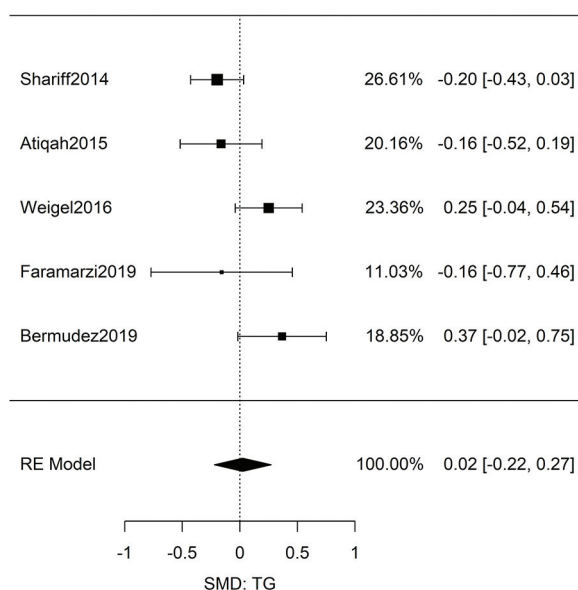
significant result:  $AOR = 0.75$  [95% CI, 0.42, 1.31,  $n = 625$ ].<sup>50</sup>

Three comparable studies (Online Appendix Table 2) were available for meta-analysis after calculating the

**Figure 7. Meta-analysis of adult studies investigating increased odds of elevated triglycerides for food-insecure patients. Synthesis of the 4 studies resulted in a nonsignificant combined odds ratio of  $OR_{TG} = 1.13$  [95% CI, 0.80, 1.61,  $n = 16,107$ ,  $Q(df = 3) = 3.29$ ,  $I^2 = 10\%$ ].**



**Figure 8. Meta-analysis of adult studies investigating food insecurity and triglycerides levels. Hedges'  $g$ , standardized mean differences with a small size correction, were calculated from the primary data of the 5 studies. Meta-analysis resulted in a nonsignificant effect:  $g_{TG} = 0.02$  [95% CI, -0.22, 0.27,  $n = 958$ ,  $Q(df = 4) = 10.2$ ,  $I^2 = 61\%$ ].**



SMD in LDL levels between the food-secure and food-insecure women<sup>50,54,55</sup>; synthesis of the results yielded significantly lower LDL levels in food-insecure patients compared with food-secure patients:  $g_{LDL\_Women} = -0.24$  [95% CI, -0.45, -0.02,  $n = 668$ ,  $Q(df = 2) = 3.1$ ,  $I^2 = 55\%$ ]. As this corresponds to unadjusted data, it is difficult to compare with the results from Tayie and Zizza and Shariff et al.<sup>49,50</sup>

## Discussion

In this systematic review and meta-analysis, we found no association between FIS and dyslipidemia. Synthesis of the available literature showed that food-insecure adults did not have significantly elevated nor decreased odds of qualifying for a dyslipidemia diagnosis, whether by elevated LDL, TC, or TG, or a decreased HDL. There are several possible explanations for the nonassociation observed in the synthesis of the current data.

First, counterbalancing, opposing effects may be operating across the general population due to 2 major subsets of patients: 1 ingesting fewer calories<sup>11–13</sup> and another consuming a poor-quality diet with normal or increased calories.<sup>14,15</sup> Given its complexity, FIS may translate into differences in diet and calorie intake, effects that may vary

significantly across different cultures, locations, and individuals. As these studies did not measure the calories or nutritional quality of the food ingested, it is currently not possible to assess the impact of these factors. Furthermore, there were very few studies outside of the USA, and few studies presenting data on socioeconomic, racial, or ethnic subgroups. Therefore, it remains possible that associations between FIS and lipid profiles might be detected in future studies focusing on specific subpopulations of patients.

Second, it is possible that the strengths (ie, effect sizes) of the intermediate associations (ie, FIS to diet quality, and diet quality to dyslipidemia) are small and do not lead to an appreciable effect size overall. The upper limits of the 95th confidence intervals from the meta-analyses provide convincing evidence that the overall effect size is most likely small. For example, the unadjusted effect size for TC was ( $g = 0.02$  [95% CI, -0.20, 0.24]); and an effect size of 0.24 is small, especially when compared with other FIS associations.<sup>31,81,82</sup> Similarly, upper limits from the covariate-adjusted ORs (ie,  $OR_{TC} = 1.00$  [95% CI, 0.95, 1.05]) suggest weak effects as well.

Finally, it is important to acknowledge that the effect of FIS on serum lipids may be time dependent



and thus may not have been captured in the currently available cross-sectional studies because the patients studied had not experienced FIS for a long enough duration to produce measurable changes in serum lipid levels. Furthermore, our review identified few studies that focused (or performed subpopulation analysis) on elderly populations, which may have demonstrated a larger response. Admittedly, our results may reflect a complex interplay of all of the processes described above.

Unlike dyslipidemia studies that used lab measurements, self-reports of previous diagnosis were significantly associated with FIS. This finding is similar to what has been previously reported by Beltrán et al for FIS and self-reported diabetes and hypertension.<sup>78,83</sup> It is currently unclear why food-insecure patients are more likely to report such chronic diagnoses, although 1 possibility is a complex interaction between FIS, anxiety/depression,<sup>31</sup> and the odds of self-reporting poor health.<sup>84</sup>

With respect to its clinical implications, our data do not indicate an association between FIS and dyslipidemia and thus do not support routine lipid screening of food-insecure individuals. However, as more FIS-dyslipidemia studies focusing on different countries, races, ethnicities, or socioeconomic groups emerge, such assessments may subsequently be determined to be warranted.

This study has several important limitations. First, the combined cross-sectional studies do not yield information on either causality or temporal relationships between FIS and lipid measurements. Second, our subgroup analyses were greatly limited by the availability of demographic-specific data on FIS and dyslipidemia. Not only were the studies limited to a few countries, there was very little data to explore by meta-analysis how the association occurs in children, across genders, across races/ethnicities, and for seniors. Third, the small number of studies do not allow satisfactory exploration of publication bias. Although no funnel asymmetry test was significant, it is important to note that the statistical power of these tests is small for the number of studies reviewed.

## Conclusions

Currently, the available published data do not support an association between FIS and dyslipidemia. This literature, however, would be further strengthened by prospective and more higher-quality retrospective cohort studies; studies targeting important

populations such as children, women, minorities, seniors, and patients with diabetes; investigations of populations beyond those of the USA, Malaysia, and Iran; and studies incorporating covariates such as calorie intake or diet quality as well as BMI.

The authors thank Whitney Orji for useful discussions of the manuscript.

To see this article online, please go to: <http://jabfm.org/content/35/4/656.full>.

## References

1. Maxwell DG. Measuring food insecurity: the frequency and severity of “coping strategies”. *Food Policy* 1996;21:291–303.
2. Barrett CB. Measuring food insecurity. *Science* 2010;327:825–8.
3. Ramsey R, Giskes K, Turrell G, Gallegos D. Food insecurity among adults residing in disadvantaged urban areas: potential health and dietary consequences. *Public Health Nutr* 2012;15:227–37.
4. Camp NL. Food insecurity and food deserts. *Nurse Pract* 2015;40:32–6.
5. Coleman-Jensen A, Rabbitt MP, Gregory CA, Singh A. 2017. Household food security in the United States in 2016. Report No.: ERR-237. U.S. Department of Agriculture, Economic Research Service.
6. Kalil A, Chen J-H. Mothers’ citizenship status and household food insecurity among low-income children of immigrants. *New Dir Child Adolesc Dev* 2008;2008:43–62.
7. Huang J, Guo B, Kim Y. Food insecurity and disability: do economic resources matter? *Soc Sci Res* 2010;39:111–24.
8. Hernandez DC, Reesor LM, Murillo R. Food insecurity and adult overweight/obesity: gender and race/ethnic disparities. *Appetite* 2017;117:373–8.
9. Brucker DL. The association of food insecurity with health outcomes for adults with disabilities. *Disabil Health J* 2017;10:286–93.
10. King C. Food insecurity and housing instability in vulnerable families. *Rev Econ Househ* 2018;16:255–73.
11. Sun Y, Liu B, Rong S, et al. Food insecurity is associated with cardiovascular and all-cause mortality among adults in the United States. *J Am Heart Assoc* 2020;9:e014629.
12. Vercammen KA, Moran AJ, McClain AC, Thorndike AN, Fulay AP, Rimm EB. Food security and 10-year cardiovascular disease risk among US adults. *Am J Prev Med* 2019;56:689–97.
13. Liu Y, Eicher-Miller HA. Food insecurity and cardiovascular disease risk. *Curr Atheroscler Rep* 2021;23:24.
14. Palakshappa D, Ip EH, Berkowitz SA, et al. Pathways by which food insecurity is associated

- with atherosclerotic cardiovascular disease risk. *J Am Heart Assoc* 2021;10:e021901.
15. Aggarwal A, Monsivais P, Cook AJ, Drewnowski A. Does diet cost mediate the relation between socioeconomic position and diet quality? *Eur J Clin Nutr* 2011;65:1059–66.
  16. Kang YJ, Wang HW, Cheon SY, Lee HJ, Hwang KM, Yoon HS. Associations of obesity and dyslipidemia with intake of sodium, fat, and sugar among Koreans: a qualitative systematic review. *Clin Nutr Res* 2016;5:290–304.
  17. O'Connor L, Imamura F, Brage S, Griffin SJ, Wareham NJ, Forouhi NG. Intakes and sources of dietary sugars and their association with metabolic and inflammatory markers. *Clin Nutr* 2018;37:1313–22.
  18. Maxwell D, Ahiadeke C, Levin C, Armar-Klemesu M, Zakariah S, Lamptey GM. Alternative food-security indicators: revisiting the frequency and severity of coping strategies. *Food Policy* 1999;24:411–29.
  19. Dixon LB, Winkleby MA, Radimer KL. Dietary intakes and serum nutrients differ between adults from food-insufficient and food-sufficient families: Third National Health and Nutrition Examination Survey, 1988–1994. *J Nutr* 2001;131:1232–46.
  20. Furness BW, Simon PA, Wold CM, Asarian-Anderson J. Prevalence and predictors of food insecurity among low-income households in Los Angeles County. *Public Health Nutr* 2004;7:791–4.
  21. Nord M [Internet]. Food insecurity in households with children: prevalence, severity, and household characteristics. EIB-56. United States Department of Agriculture, Economic Research Service. September 2009 [accessed 2021 Dec 28]. Available from: [https://www.ers.usda.gov/webdocs/publications/44419/9360\\_eib56\\_1\\_.pdf?v=0](https://www.ers.usda.gov/webdocs/publications/44419/9360_eib56_1_.pdf?v=0).
  22. Rautela G, Ali MK, Prabhakaran D, et al. Prevalence and correlates of household food insecurity in Delhi and Chennai, India. *Food Secur* 2020;12:391–404.
  23. Jung NM, de Baires FS, Pattussi MP, Pauli S, Neutzling MB. Gender differences in the prevalence of household food insecurity: a systematic review and meta-analysis. *Public Health Nutr* 2017;20:902–16.
  24. Bawadi HA, Tayyem RF, Dwairy AN, Al-Akour N. Prevalence of food insecurity among women in northern Jordan. *J Health Popul Nutr* 2012;30:49–55.
  25. Tóth PP, Potter D, Ming EE. Prevalence of lipid abnormalities in the United States: the National Health and Nutrition Examination Survey 2003–2006. *J Clin Lipidol* 2012;6:325–30.
  26. Joshi SR, Anjana RM, Deepa M, ICMR-INDIAB Collaborative Study Group, et al. Prevalence of dyslipidemia in urban and rural India: the ICMR-INDIAB study. *PLoS One* 2014;9:e96808.
  27. Scheidt-Nave C, Du Y, Knopf H, et al. Prevalence of dyslipidemia among adults in Germany. *Bundesgesundheitsblatt Gesundheitsforschung Gesundheitsschutz* 2013;56:661–7.
  28. Whitaker RC, Phillips SM, Orzol SM. Food insecurity and the risks of depression and anxiety in mothers and behavior problems in their preschool-aged children. *Pediatrics* 2006;118:e859–68.
  29. Kim K, Frongillo EA. Participation in food assistance programs modifies the relation of food insecurity with weight and depression in elders. *J Nutr* 2007;137:1005–10.
  30. Tsai AC, Bangsberg DR, Frongillo EA, et al. Food insecurity, depression and the modifying role of social support among people living with HIV/AIDS in rural Uganda. *Soc Sci Med* 2012;74:2012–9.
  31. Arenas DJ, Thomas A, Wang J, DeLisser HM. A systematic review and meta-analysis of depression, anxiety, and sleep disorders in US adults with food insecurity. *J Gen Intern Med* 2019;34:2874–82.
  32. Goldschmid MG, Barrett-Connor E, Edelstein SL, Wingard DL, Cohn BA, Herman WH. Dyslipidemia and ischemic heart disease mortality among men and women with diabetes. *Circulation* 1994;89:991–7.
  33. Isomaa B, Almgren P, Tuomi T, et al. Cardiovascular morbidity and mortality associated with the metabolic syndrome. *Diabetes Care* 2001;24:683–9.
  34. Austin MA, Breslow JL, Hennekens CH, Buring JE, Willett WC, Krauss RM. Low-density lipoprotein subclass patterns and risk of myocardial infarction. *JAMA* 1988;260:1917–21.
  35. Griffin BA, Freeman DJ, Tait GW, et al. Role of plasma triglyceride in the regulation of plasma low density lipoprotein (LDL) subfractions: relative contribution of small, dense LDL to coronary heart disease risk. *Atherosclerosis* 1994;106:241–53.
  36. Lee JS, Chang PY, Zhang Y, et al. Triglyceride and HDL-C dyslipidemia and risks of coronary heart disease and ischemic stroke by glycemic dysregulation status: the strong heart study. *Diabetes Care* 2017;40:529–37.
  37. Amarenco P, Bogousslavsky J, Callahan A, 3rd, Stroke Prevention by Aggressive Reduction in Cholesterol Levels (SPARCL) Investigators, et al. High-dose atorvastatin after stroke or transient ischemic attack. *N Engl J Med* 2006;355:549–59.
  38. Amarenco P, Kim JS, Labreuche J, et al. Benefit of targeting a LDL (low-density lipoprotein) cholesterol <70 mg/dL during 5 years after ischemic stroke. *Stroke* 2020;51:1231–9.
  39. Arenas DJ, Zhou S, Thomas A, Wang J, Arroyo GV, Bash K [Internet]. Negative health outcomes associated with food insecurity status in the United States of America: a systematic review of peer-reviewed studies. *NutriXiv* 2018 [accessed 2021 Dec 28]. Available from: [osf.io/preprints/nutrixiv/uk9xw](https://osf.io/preprints/nutrixiv/uk9xw).

40. Wallace BC, Small K, Brodley CE, Lau J, Trikalinos TA [Internet]. Deploying an interactive machine learning system in an evidence-based practice center: abstrackr. *Proceedings of the 2nd ACM SIGHT International Health Informatics Symposium* 819–824 (ACM, 2012) [accessed 2021 Dec 28]. Available from: <https://dl.acm.org/doi/10.1145/2110363.2110464>.
41. Rathbone J, Hoffmann T, Glasziou P. Faster title and abstract screening? Evaluating Abstrackr, a semi-automated online screening program for systematic reviewers. *Syst Rev* 2015;4:80.
42. Arenas DJ. Inter-Rater: software for analysis of inter-rater reliability by permutating pairs of multiple users. *arXiv:1809.05731* [Preprint]. 2018 [accessed 2021 Dec 28]. Available from: <https://arxiv.org/abs/1809.05731v1>.
43. Downes MJ, Brennan ML, Williams HC, Dean RS. Development of a critical appraisal tool to assess the quality of cross-sectional studies (AXIS). *BMJ Open* 2016;6:e011458.
44. Raudenbush SW. Random effects models. In: Cooper H, Hedges LV, editors. *The handbook of research synthesis*. New York: Russell Sage Foundation; 1994. p. 301–21.
45. IntHout J, Ioannidis JP, Borm GF. The Hartung-Knapp-Sidik-Jonkman method for random effects meta-analysis is straightforward and considerably outperforms the standard DerSimonian-Laird method. *BMC Med Res Methodol* 2014;14:25.
46. Higgins JP, Thompson SG. Quantifying heterogeneity in a meta-analysis. *Stat Med* 2002;21:1539–58.
47. Begg CB, Mazumdar M. Operating characteristics of a rank correlation test for publication bias. *Biometrics* 1994;50:1088–101.
48. Egger M, Smith GD, Schneider M, Minder C. Bias in meta-analysis detected by a simple, graphical test. *BMJ* 1997;315:629–34.
49. Tayie FA, Zizza CA. Food insecurity and dyslipidemia among adults in the United States. *Prev Med* 2009;48:480–5.
50. Shariff ZM, Sulaiman N, Jalil RA, et al. Food insecurity and the metabolic syndrome among women from low income communities in Malaysia. *Asia Pac J Clin Nutr* 2014;23:138–47.
51. Berkowitz SA, Meigs JB, DeWalt D, et al. Material need insecurities, diabetes control, and care utilization: results from the Measuring Economic iNsecurity in Diabetes (MEND) study. *JAMA Intern Med* 2015;175:257–65.
52. Moreno G, Morales LS, Isiordia M, et al. Latinos with diabetes and food insecurity in an agricultural community. *Med Care* 2015;53:423–9.
53. Berkowitz SA, Baggett TP, Wexler DJ, Huskey KW, Wee CC. Food insecurity and metabolic control among US adults with diabetes. *Diabetes Care* 2013;36:3093–9.
54. Atiqah AN, Norazmir MN, Anuar MK, Fahmi MM, Norazlan Shah H. Food security status: its association with inflammatory marker and lipid profile among young adult. *Int Food Res J* 2015;22:1855–63.
55. Weigel MM, Armijos RX, Racines M, Cevallos W. Food insecurity is associated with undernutrition but not overnutrition in Ecuadorian women from low-income urban neighborhoods. *J Environ Public Health* 2016;2016:8149459.
56. Shalowitz MU, Eng JS, McKinney CO, et al. Food security is related to adult type 2 diabetes control over time in a United States safety net primary care clinic population. *Nutr Diabetes* 2017;7:e277.
57. Bermúdez-Millán A, Wagner JA, Feinn RS, et al. Inflammation and stress biomarkers mediate the association between household food insecurity and insulin resistance among Latinos with type 2 diabetes. *J Nutr* 2019;149:982–8.
58. Smalls BL, Gregory CM, Zoller JS, Egede LE. Assessing the relationship between neighborhood factors and diabetes related health outcomes and self-care behaviors. *BMC Health Serv Res* 2015;15:11.
59. Weigel MM, Armijos RX, Hall YP, Ramirez Y, Orozco R. The household food insecurity and health outcomes of US–Mexico border migrant and seasonal farmworkers. *J Immigr Minor Health* 2007;9:157–69.
60. Shin JI, Bautista LE, Walsh MC, Malecki KC, Nieto FJ. Food insecurity and dyslipidemia in a representative population-based sample in the US. *Prev Med* 2015;77:186–90.
61. Shiue I. People with diabetes, respiratory, liver or mental disorders, higher urinary antimony, bisphenol A, or pesticides had higher food insecurity: USA NHANES, 2005–2006. *Environ Sci Pollut Res Int* 2016;23:198–205.
62. López-Teros V, Haby MM, Frongillo EA, et al. Food insecurity was associated with low quality diet and low HDL level in mothers of Northwest Mexico relying on fisheries for livelihood. *Nutr Hosp* 2018;35:1379–86.
63. Weigel MM, Armijos RX. Food insecurity, cardiometabolic health, and health care in US–Mexico border immigrant adults: an exploratory study. *J Immigr Minor Health* 2019;215:1085–94.
64. Parker ED, Widome R, Nettleton JA, Pereira MA. Food security and metabolic syndrome in US adults and adolescents: findings from the National Health and Nutrition Examination Survey, 1999–2006. *Ann Epidemiol* 2010;20:364–70.
65. Faramarzi E, Somi M, Ostadrahimi A, et al. Association between food insecurity and metabolic syndrome in North West of Iran: Azar Cohort study. *J Cardiovasc Thorac Res* 2019;11:196–202.

66. Holben DH, Pheley AM. Peer reviewed: diabetes risk and obesity in food-insecure households in rural Appalachian Ohio. *Prev Chronic Dis* 2006;3:A82.
67. Gibson DM. Food insecurity, eye care receipt, and diabetic retinopathy among US adults with diabetes: implications for primary care. *J Gen Intern Med* 2019;34:1700–2.
68. Sattler EL, Lee JS, Bhargava V. Food insecurity and medication adherence in low-income older Medicare beneficiaries with type 2 diabetes. *J Nutr Gerontol Geriatr* 2014;33:401–17.
69. Stuff JE, Casey PH, Connell CL, et al. Household food insecurity and obesity, chronic disease, and chronic disease risk factors. *J. Hunger Environ Nutr* 2007;1:43–62.
70. Fernandes SG, Rodrigues AM, Nunes C, et al. Food insecurity in older adults: results from the Epidemiology of Chronic Diseases Cohort Study 3. *Front Med (Lausanne)* 2018;5:203.
71. Mendy VL, Vargas R, Cannon-Smith G, Payton M, Enkhmaa B, Zhang L. Food insecurity and cardiovascular disease risk factors among Mississippi adults. *IJERPH* 2018;15:2016.
72. Holben DH, Taylor CA. Food insecurity and its association with central obesity and other markers of metabolic syndrome among persons aged 12 to 18 years in the United States. *J Am Osteopath Assoc* 2015;115:536–43.
73. Lee AM, Scharf RJ, Filipp SL, Gurka MJ, DeBoer MD. Food insecurity is associated with prediabetes risk among US adolescents, NHANES 2003–2014. *Metab Syndr Relat Disord* 2019;17:347–54.
74. Tester JM, Laraia BA, Leung CW, Mietus-Snyder ML. Peer reviewed: dyslipidemia and food security in low-income US adolescents: National Health and Nutrition Examination Survey, 2003–2010. *Prev Chronic Dis* 2016;13:E22.
75. Bahadur K, Pai S, Thoby E, Petrova A. Frequency of food insecurity and associated health outcomes in pediatric patients at a federally qualified health center. *J Community Health* 2018;43:896–900.
76. Landry MJ, Khazaei E, Markowitz AK, et al. Impact of food security on glycemic control among low-income primarily Hispanic/Latino children in Los Angeles, California: a cross-sectional study. *J Hunger Environ Nutr* 2019;14:709–24.
77. Mahmoodi MR, Najafipour H, Mohsenpour MA, Amiri M. The relationship between food insecurity with cardiovascular risk markers and metabolic syndrome components in patients with diabetes: a population-based study from Kerman coronary artery disease risk study. *J Res Med Sci* 2017;22:118.
78. Beltrán S, Pharel M, Montgomery CT, López-Hinojosa IJ, Arenas DJ, DeLisser HM. Food insecurity and hypertension: a systematic review and meta-analysis. *PLoS One* 2020;15:e0241628.
79. Sterne JA, Gavaghan D, Egger M. Publication and related bias in meta-analysis: power of statistical tests and prevalence in the literature. *J Clin Epidemiol* 2000;53:1119–29.
80. Deeks JJ, Macaskill P, Irwig L. The performance of tests of publication bias and other sample size effects in systematic reviews of diagnostic test accuracy was assessed. *J Clin Epidemiol* 2005;58:882–93.
81. Cohen J. Statistical power analysis for the behavioral sciences. Cambridge (MA): Academic Press; 2013.
82. Fern EF, Monroe KB. Effect-size estimates: issues and problems in interpretation. *J Consum Res* 1996;23:89–105.
83. Beltrán S, Arenas DJ, Pharel M, Montgomery C, Lopez-Hinojosa I, DeLisser HM. Food insecurity, type 2 diabetes, and hyperglycaemia: a systematic review and meta-analysis. *Endocrinol Diabetes Metab* 2022;5: e00315.
84. Stuff JE, Casey PH, Szeto KL, et al. Household food insecurity is associated with adult health status. *J Nutr* 2004;134:2330–5.



## APPENDIX

Note: References cited below are those of the 32 studies that were the basis of this systematic review and meta-analysis. Please note that the numbering of these studies in the references for the appendix does not correspond to their numbering in the references for the main manuscript.

Figure 1. Flow chart displaying the study selection process.

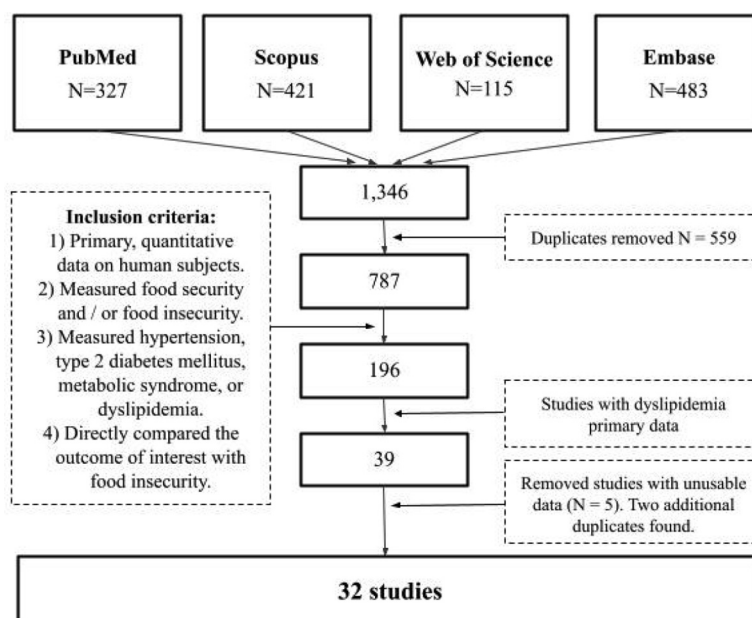
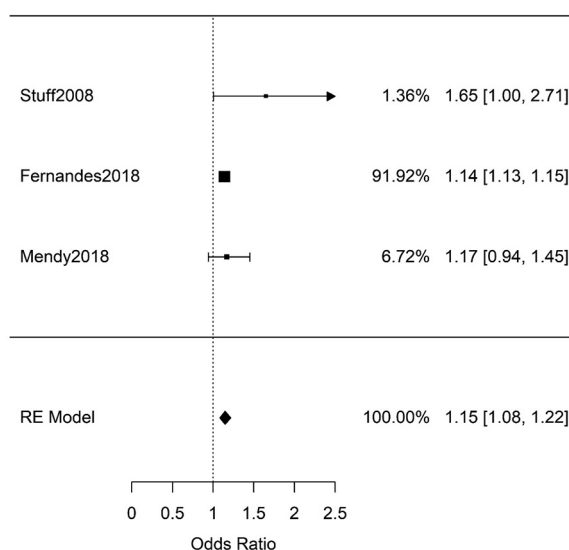


Figure 2. Meta-analysis of adult studies ( $n = 9,212$ ) investigating increased odds of self-reported dyslipidemia for food insecure patients. Synthesis of the three studies resulted in a significant combined odds ratio of 1.15 [95%CI: 1.08–1.22,  $n = 9,212$ ,  $Q(df = 2) = 2.2$ ,  $I^2 = 10\%$ ].





**Table 1. Adult studies (n = 22,746) with sufficient data to retrieve or calculate the odds ratio for food insecurity and elevated LDL**

| Study                      | Patients  | Study Size | Criteria                     | Results  | Covariates  |
|----------------------------|---|------------|------------------------------|--|---|
| Dixon2001 <sup>1</sup>     | USA. NHANES 1988-1994. Adults. General population.  | 6,475      | LDL > 160 mg/dL              | AOR = 0.73 [0.23, 2.32].<br>Table 6.               | Age, race, income, region of USA, smoking, alcohol.   |
|                            | USA. NHANES 1988-1994. Seniors. General population. | 3,690      |                              | AOR = 1.00 [0.27, 3.71].<br>Table 6.               |   |
|                            | Combined  | 10,165     |                              | AOR = 0.84 [0.35, 1.99].                           |   |
| Tayie2009 <sup>2</sup>     | USA. NHANES 1999-2002. Women.                       | 2,977      | LDL > 130 mg/dL              | AOR = 1.51 [1.02, 2.24].<br>*,\$\$: Table 4.       | Age, education, income, physical activity, race/ethnicity, smoking.   |
|                            | USA. NHANES 1999-2002. Men.                         | 2,572      |                              | AOR = 0.93 [0.58, 1.51].<br>*,\$\$: Table 4.       |   |
|                            | Combined  | 5,549      |                              | AOR = 1.21 [0.75, 1.94].                           |   |
| Shariff2014 <sup>3</sup>   | Malaysia. Low-income women.                         | 625        | LDL > 130 mg/dL              | AOR = 0.745 [0.42, 1.32].<br>Table 4.              | Adjusted for age, ethnicity, urban/rural strata, education, employment and income per capita.   |
| Berkowitz2015 <sup>4</sup> | USA. Boston. General population.                    | 411        | LDL > 100 mg/dL              | AOR = 1.49 [1.13, 1.97].<br>Table 4.               | Age, gender, race/ethnicity, education, insurance, health literacy, survey language, nativity, blood pressure medication use, and clustering by clinic.                                       |
| Moreno2015 <sup>5</sup>    | USA. California. Hispanics with diabetes.           | 250        | LDL > 100 mg/dL <sup>^</sup> | AOR = 1.33 [0.60, 2.94].<br><sup>^</sup> : Table 3 | Age, gender, yearly household income, education, insurance coverage, general health status, number of doctor visits in the last 12 months, insulin use, and years with diabetes, <b>BMI</b> . |

\*: Calculated by authors from primary data

\$\$: Data from different FIS levels was combined with RE model

<sup>^</sup>: Inverted AOR from low LDL to high LDL**Excluded studies:**

|                            |   |       |                 |                                      |   |
|----------------------------|---|-------|-----------------|--------------------------------------|---|
| Berkowitz2013 <sup>6</sup> | USA. NHANES 1999-2008. Diabetic patients. | 2,557 | LDL > 100 mg/dL | AOR = 1.86 [1.01, 3.44].<br>Table 2. | Age, gender, race/ethnicity, education, income, insurance, smoking, diabetes duration, statin use, <b>BMI</b> . |
|----------------------------|---|-------|-----------------|--------------------------------------|---|

For studies with overlapping subjects, such as those from NHANES, we chose the study with the highest amount of subjects. The studies were still catalogued for their potential utility in subgroup analysis.

The study by Ford et al.<sup>7</sup> was not included in the meta-analyses due to unavailability of separate LDL measurement..

**Table 2. Adult studies (n = 1,143) with sufficient data to retrieve or calculate the standardized mean difference (Hedges'g) in LDL levels between food secure and food insecure patients**

| Study                       | Patients                                   | Study Size | Results                                  |
|-----------------------------|--|------------|--|
| Shariff2014 <sup>3</sup>    | Malaysia.<br>Low-income Women.             | 293        | g = -0.38 [-0.61, -0.14].<br>*: Table 2. |
| Atiqah2015 <sup>8</sup>     | Malaysia.<br>General Population.<br>Women. | 109        | g = 0.02 [-0.36, 0.41].<br>*: Table 3.   |
|                             | Malaysia.<br>General Population.<br>Men.   | 15         | g = 0.22 [-1.05, 1.49].<br>*: Table 3.   |
|                             | Combined                                   | 124        | g = 0.10 [-0.26, 0.45].<br>*: Table 3.   |
| Weigel2016 <sup>9</sup>     | Ecuador.<br>Low-income women.              | 269        | g = -0.23 [-0.52, 0.06].<br>*: Table 4.  |
| Shalowitz2017 <sup>10</sup> | USA. Illinois.<br>Diabetic patients.       | 336**      | g = 0.15 [-0.06, 0.37].<br>*: Table 1.   |
| Bermudez2019 <sup>11</sup>  | USA. Hartford.<br>Hispanics with diabetes. | 121        | g = 0.35 [-0.03, 0.74].<br>Table 1.      |

\*: Calculated from primary data by the authors

\*\*: Baseline data of the cohort

**Excluded studies:**

|                          |                                    |        |          |
|--------------------------|------------------------------------|--------|----------|
| Dixon2001 <sup>1</sup>   | USA. NHANES 1988-1994.<br>Adults.  | 6,475  | Table 5. |
|                          | USA. NHANES 1988-1994.<br>Seniors. | 3,690  | Table 5. |
|                          | Combined                           | 10,165 |          |
| Smalls2015 <sup>12</sup> | USA. Veterans with T2DM.           | 411    |          |

The study by Dixon et al. was not included in the Hedges g meta analysis due to inability to obtain standard deviation for all groups. The study by Smalls et al. was not added due to lack of primary data to obtain an odds ratio with confidence intervals.

**Table 3. Adult studies (n = 28,557) with sufficient data to retrieve or calculate the odds ratio for food insecurity and decreased HDL**

| Study                    | Patients  | Study Size | Criteria  | Results                                      | Covariates  |
|--------------------------|---|------------|---|--|---|
| Dixon2001 <sup>1</sup>   | USA. NHANES 1988-1994. Adults. General population.  | 6,475      | HDL < 35 mg/dL                                      | AOR = 0.97 [0.49, 1.90]. Table 6.            | Age, race, income, region of USA, smoking, alcohol.   |
|                          | USA. NHANES 1988-1994. Seniors. General population. | 3,690      |   | AOR = 1.46 [0.64, 3.35]. Table 6.            |   |
|                          | Combined  | 10,165     |   | AOR = 1.14 [0.68, 1.92].                     |   |
| Weigel2007 <sup>13</sup> | USA<br>El Paso, TX. 2003.                           | 100        | HDL < 40 mg/dL (males);<br>HDL < 50 mg/dL (females) | AOR = 1.32 [0.67, 2.60].<br>*,\$\$: Table 3. | Age, sex, education, US residence time, children living in household.                         |
| Tayie2009 <sup>2</sup>   | USA. NHANES 1999-2002. Women.                       | 2,977      | HDL < 50 mg/dL                                      | AOR = 0.84 [0.61, 1.16].<br>*,\$\$: Table 4. | Age, education, income, physical activity, race/ethnicity, smoking                            |
|                          | USA. NHANES 1999-2002. Men.                         | 2,572      | HDL < 40 mg/dL                                      | AOR = 1.04 [0.79, 1.38].<br>*,\$\$: Table 4. |   |
|                          | Combined.   | 5,549      | N/A   | AOR = 0.95 [0.77, 1.17].                     |   |
| Ford2013 <sup>7</sup>    | USA. NHANES 2003-2008. General population.          | 10,455     | HDL < 40 (males);<br>HDL < 50 (females)             | ARR = 1.02 [0.97, 1.07].<br>*,\$\$: Table 2. | Age, sex, race, educational status, health insurance, alcohol use.                            |
| Shariff2014 <sup>3</sup> | Malaysia.<br>Low-income women.                      | 625        | HDL < 50 mg/dL                                      | AOR = 0.91 [0.54, 1.55].<br>Table 4.         | Adjusted for age, ethnicity, urban/rural strata, education, employment and income per capita. |
| Shin2015 <sup>14</sup>   | USA. Wisconsin. SHW 2008-2011. Men.                 | 865        | HDL < 40 mg/dL                                      | AOR = 1.10 [0.68, 1.80].<br>Table 4.         | Age, race, education, smoking, alcohol, obesity, <b>BMI</b> .                                 |
|                          | USA. Wisconsin. SHW 2008-2011. Women.               | 798        | HDL < 50 mg/dL                                      | AOR = 2.04 [1.15, 3.64].<br>Table 4.         |   |
|                          | Combined  | 1,663      | N/A   | AOR = 1.47 [0.80, 2.69].                     |   |

\*: Calculated by authors from primary data

\$\$: Results from different FIS levels combined by RE model

**Excluded studies:**

|                              |  |        |                     |                                      |   |
|------------------------------|--|--------|---------------------|--------------------------------------|---|
| Shiue2016 <sup>15</sup>      | USA.<br>NHANES<br>2003-2004.                     | 4,924  | HDL < 20 or<br>> 85 | AOR = 0.89 [0.61, 1.31].<br>Table 2. | Age, sex, education,<br>ethnicity, family income. |
| Murillo2018 <sup>16</sup>    | Mexico.<br>Women in<br>fisheries<br>communities. | 116    |                     |                                      |   |
| Vercammenn2019 <sup>17</sup> | USA.<br>NHANES<br>2007-2014.                     | 13,518 |                     |                                      |   |
| Weigel2019 <sup>18</sup>     | USA.<br>El Paso, TX:<br>2015                     | 75     |                     |                                      |   |

Shiue 2015 was not included in the meta-analysis due to overlapping data. For studies with overlapping subjects, such as those from NHANES, we chose the study with the highest number of subjects. The studies were still catalogued for their potential utility in subgroup analysis. The study by Murillo et al.<sup>16</sup> and Vercammenn et al.<sup>17</sup> were not added to the meta analyses due to lack of primary data to calculate either OR or Hedges g. The study by Weigel et al.<sup>18</sup> was not added due to inability to separate various lipid measurements.

**Table 4. Adult studies (n = 7,096) with sufficient data to retrieve or calculate the standardized mean difference (Hedges'g) in HDL levels between food secure and food insecure patients**

| Study                       | Patients                                      | Study Size | Results                                     |
|-----------------------------|---|------------|---|
| Parker2010 <sup>19</sup>    | USA. NHANES 1999-2006.<br>General population. | 6,138      | g = -0.01 [-0.07, 0.05]<br>*,\$\$: Table 1. |
| Shariff2014 <sup>3</sup>    | Malaysia.<br>Low-income Women.                | 293        | g = -0.10 [-0.33, 0.13].<br>*: Table 2.     |
| Atiqah2015 <sup>8</sup>     | Malaysia.<br>General Population.<br>Women.    | 109        | g = 0.14 [-0.25, 0.53].<br>*: Table 3.      |
|                             | Malaysia.<br>General Population. Men.         | 15         | g = -0.24 [-1.51, 1.03].<br>*: Table 3.     |
|                             | Combined                                      | 124        | g = 0.05 [-0.31, 0.40].<br>*: Table 3.      |
| Weigel2016 <sup>9</sup>     | Ecuador.<br>Low-income women.                 | 269        | g = -0.06 [-0.35, 0.23].<br>*:Table 4.      |
| Faramarzi2019 <sup>20</sup> | Iran.<br>Azar cohort 2014-2017.               | 151        | g = -0.30 [-0.91, 0.32].<br>*: Table 4.     |
| Bermudez2019 <sup>11</sup>  | USA. Hartford.<br>Hispanics with diabetes.    | 121        | g = 0.23 [-0.15, 0.61].<br>*: Table 1.      |

\*: Calculated by authors from the primary data

\$\$: FIS levels merged by means and pooled-SD

**Excluded studies:**

|                        |                                    |        |          |
|------------------------|------------------------------------|--------|----------|
| Dixon2001 <sup>1</sup> | USA. NHANES 1988-1994.<br>Adults.  | 6,475  | Table 5. |
|                        | USA. NHANES 1988-1994.<br>Seniors. | 3,690  | Table 5. |
|                        | Combined                           | 10,165 |          |

The study by Dixon et al. was not included in the Hedges g meta analysis due to inability to obtain standard deviation for all groups.



**Table 5. Adult studies (n = 28,225) with sufficient data to retrieve or calculate the odds ratio for food insecurity and elevated total cholesterol**

| Study                    | Patients  | Study Size | Criteria  | Results                                   | Covariates  |
|--------------------------|---|------------|---|---|---|
| Dixon2001 <sup>1</sup>   | USA. NHANES 1988-1994. Adults. General population.  | 6,475      | TC $\geq$ 6.21 mmol/L                                   | AOR = 0.80 [0.42, 1.50]. Table 6.         | Age, race, income, region of USA, smoking, alcohol.   |
|                          | USA. NHANES 1988-1994. Seniors. General population. | 3,690      |   | AOR = 0.67 [0.33, 1.36]. Table 6.         |   |
|                          | Combined  | 10,165     |   | AOR = 0.74 [0.46, 1.19].                  |   |
| Weigel2007 <sup>13</sup> | USA: El Paso, TX. 2003.                             | 100        | TC > 200 mg/dL  | AOR = 0.68 [0.32, 1.44] *,\$\$: Table 3.  | Age, sex, education, US residence time, children living in household.                         |
| Tayie2009 <sup>2</sup>   | USA. NHANES 1999-2002. Women.                       | 2,977      | TC $\geq$ 240 mg/dL                                     | AOR = 1.02 [0.67, 1.57]. *,\$\$: Table 4. | Age, education, income, physical activity, race/ethnicity, smoking.                           |
|                          | USA. NHANES 1999-2002. Men.                         | 2,572      |   | AOR = 1.03 [0.70, 1.52]. *,\$\$: Table 4. |   |
|                          | Combined  | 5,549      |   | AOR = 1.03 [0.77, 1.37].                  |   |
| Ford2013 <sup>7</sup>    | USA. NHANES 2003-2008. General population.          | 10,455     | TC $\geq$ 200 mg/dL or use of cholesterol-lowering meds | ARR = 1.01 [0.96, 1.07]. *,\$\$: Table 2. | Age, sex, race, educational status, health insurance, alcohol use.                            |
| Shariff2014 <sup>3</sup> | Malaysia. Low-income women.                         | 293        | TC $\geq$ 5.17 mmol/L                                   | AOR = 0.84 [0.48, 1.49]. Table 4.         | Adjusted for age, ethnicity, urban/rural strata, education, employment and income per capita. |
| Shin2015 <sup>14</sup>   | USA. Wisconsin. SHW 2008-2011. Men.                 | 865        | TC $\geq$ 240 mg/dL                                     | AOR = 0.95 [0.56, 1.62]. Table 4.         | Age, race, education, smoking, alcohol, <b>BMI</b> .  |
|                          | USA. Wisconsin. SHW 2008-2011. Women.               | 798        |   | AOR = 0.57 [0.31, 1.02]. Table 4.         |   |
|                          | Combined  | 1,663      |   | AOR = 0.75 [0.45, 1.24]                   |   |

\*: Calculated by authors from primary data

\$\$: Results from different FIS levels combined by RE model

**Excluded studies:**

|                         |                        |       |                   |                                 |                                 |
|-------------------------|------------------------|-------|-------------------|---------------------------------|---------------------------------|
| Shiue2016 <sup>15</sup> | USA. NHANES 2003-2004. | 4,924 | TC < 140 or > 400 | AOR = 1.26 [0.82, 1.93] Table 2 | Age, sex, education, ethnicity, |
|-------------------------|------------------------|-------|-------------------|---------------------------------|---------------------------------|

For studies with overlapping subjects, such as those from NHANES, we chose the study with the highest amount of subjects. The studies were still catalogued for their potential utility in subgroup analysis.

**Table 6. Adult studies (n = 1,614) with sufficient data to retrieve or calculate the standardized mean difference (Hedges'g) in total cholesterol levels between food secure and food insecure patients**

| Study                      | Patients                                   | Study Size | Results                                 |
|----------------------------|--|------------|---|
| Holben2006 <sup>21</sup>   | USA<br>Rural Ohio.<br>Men.                 | 285        | g = -0.12 [-0.42, 0.17].<br>*: Table 5. |
|                            | USA<br>Rural Ohio.<br>Women.               | 522        | g = -0.05 [-0.25, 0.14].<br>*: Table 5. |
|                            | Combined                                   | 807        | g = -0.03 [-0.19, 0.14].<br>*: Table 5. |
| Shariff2014 <sup>3</sup>   | Malaysia.<br>Low-income Women.             | 293        | g = -0.23 [-0.46, 0.00].<br>*: Table 2. |
| Atiqah2015 <sup>8</sup>    | Malaysia.<br>General Population. Women.    | 15         | g = 0.06 [-0.33, 0.45].<br>*:Table 3.   |
|                            | Malaysia.<br>General Population. Men.      | 109        | g = 0.14 [-1.13, 1.41].<br>*: Table 3.  |
|                            | Combined                                   | 124        | g = 0.09 [-0.26, 0.45].<br>*: Table 3.  |
| Weigel2016 <sup>9</sup>    | Ecuador. Low-income women.                 | 269        | g = -0.14 [-0.43, 0.15].<br>*: Table 4. |
| Bermudez2019 <sup>11</sup> | USA. Hartford.<br>Hispanics with diabetes. | 121        | g = 0.58 [0.19, 0.97].<br>*: Table 1    |

\*: Calculated by authors from the primary data

**Excluded studies:**

|                        |                                       |        |          |
|------------------------|---------------------------------------|--------|----------|
| Dixon2001 <sup>1</sup> | USA.<br>NHANES 1988-1994.<br>Adults.  | 6,475  | Table 5. |
|                        | USA.<br>NHANES 1988-1994.<br>Seniors. | 3,690  | Table 5. |
|                        | Combined                              | 10,165 |          |

The study by Dixon et al. was not included in the Hedges g meta-analysis due to inability to obtain standard deviation for all groups.

**Table 7. Adult studies (n = 16,107) with sufficient data to retrieve or calculate the odds ratio for food insecurity and elevated triglycerides**

| Study                    | Patients  | Study Size | Criteria              | Results  | Covariates  |
|--------------------------|---|------------|-----------------------|--|---|
| Dixon2001 <sup>1</sup>   | USA. NHANES 1988-1994. Adults. General population.  | 6,475      | TG $\geq$ 2.26 mmol/L | AOR = 1.82 [0.80, 4.18].<br>Table 6.           | Age, race, income, region of USA, smoking, alcohol.   |
|                          | USA. NHANES 1988-1994. Seniors. General population. | 3,690      |                       | AOR = 1.11 [0.19, 6.45].<br>Table 6.           |   |
|                          | Combined  | 10,165     |                       | AOR = 1.66 [0.79, 3.52].                       |   |
| Weigel2007 <sup>13</sup> | USA: El Paso, TX. 2003.                             | 100        | TG>150 mg/dL          | AOR = 1.46 [0.74, 2.85].<br>*,\$\$: Table 3.   | Age, sex, education, US residence time, children living in household.                         |
| Tayie2009 <sup>2</sup>   | USA. NHANES 1999-2002. Women.                       | 2977       | TG $\geq$ 150 mg/dL   | AOR = 1.38 [0.88, 2.16].<br>*,\$\$: Table 4.   | Age, education, income, physical activity, race/ethnicity, smoking                            |
|                          | USA. NHANES 1999-2002. Men.                         | 2572       |                       | AOR = 0.76 [0.49, 1.18] *:<br>*,\$\$: Table 4. |   |
|                          | Combined  | 5,549      |                       | AOR = 1.02 [0.57, 1.83].                       |   |
| Shariff2014 <sup>3</sup> | Malaysia. Low-income women.                         | 293        | TG > 150 mg/dL        | AOR = 0.72 [0.36, 1.45].<br>Table 4.           | Adjusted for age, ethnicity, urban/rural strata, education, employment and income per capita. |

\*: Calculated by authors from primary data

\$\$: Results from different FIS levels combined by RE model

**Table 8. Adult studies (n = 958) with sufficient data to retrieve or calculate the standardized mean difference (Hedges'g) in triglyceride levels between food secure and food insecure patients**

| Study                       | Patients                                   | Study Size | Results                                 |
|-----------------------------|--|------------|---|
| Shariff2014 <sup>3</sup>    | Malaysia.<br>Low-income Women.             | 293        | g = -0.20 [-0.43, 0.03].<br>*: Table 2. |
| Atiqah2015 <sup>8</sup>     | Malaysia.<br>General Population.<br>Women. | 15         | g = -0.28 [-0.67, 0.10].<br>*: Table 3. |
|                             | Malaysia.<br>General Population.<br>Men.   | 109        | g = 0.35 [-0.92, 1.62].<br>*: Table 3.  |
|                             | Combined                                   | 124        | g = -0.16 [-0.52, 0.19].<br>*: Table 3. |
| Weigel2016 <sup>9</sup>     | Ecuador.<br>Low-income women.              | 269        | g = 0.25 [-0.04, 0.54].<br>*: Table 4.  |
| Faramarzi2019 <sup>20</sup> | Iran.<br>Azar cohort 2014-2017             | 151        | g = -0.16 [-0.77, 0.46].<br>*: Table 4. |
| Bermudez2019 <sup>11</sup>  | USA. Hartford.<br>Hispanics with diabetes. | 121        | g = 0.37 [-0.02, 0.75].<br>*: Table 1.  |

**Excluded studies:**

|                        |                                       |        |          |
|------------------------|---------------------------------------|--------|----------|
| Dixon2001 <sup>1</sup> | USA.<br>NHANES 1988-1994.<br>Adults.  | 6,475  | Table 5. |
|                        | USA.<br>NHANES 1988-1994.<br>Seniors. | 3,690  | Table 5. |
|                        | Combined                              | 10,165 |          |

The study by Dixon et al. was not included in the Hedges g meta-analysis due to inability to obtain standard deviation for all groups.

|                          |   |       |         |
|--------------------------|---|-------|---------|
| Parker2010 <sup>19</sup> | USA. NHANES 1999-2006.<br>General population. | 6,138 | Table 1 |
|--------------------------|---|-------|---------|

The study by Parker et al was not included due to a likely typo in Table 1 for the triglyceride levels. The values in the table [1.18 (1.1) mg/dL for food-secure and  $\approx$  120 (4.4) mg/dL for food insecure], and the t-test statistics in the text, are not compatible.

**Table 9. Pediatric studies with sufficient data to retrieve or calculate the standardized mean difference (Hedges'g) in lipid levels between food secure and food insecure patients**

| Lipid | Study                    | Patients                                   | Study Size | Results                                     |
|-------|--------------------------|--|------------|---|
| LDL   | Landry2018 <sup>22</sup> | USA. Los Angeles, CA. Hispanics.           | 99         | g = 0.16 [-0.24, 0.56].<br>*: Table3        |
| HDL   | Landry2018 <sup>22</sup> | USA. Los Angeles, CA. Hispanics.           | 99         | g = 0.22 [-0.18, 0.62].<br>*: Table3        |
|       | Parker2010 <sup>19</sup> | USA. NHANES 1999-2006. General population. | 3,126      | g = -0.02 [-0.09, 0.06].<br>*,\$\$: Table 1 |
| TC    | Landry2018 <sup>22</sup> | USA. Los Angeles, CA. Hispanics.           | 99         | g = 0.29 [-0.12, 0.69].<br>*: Table3        |
| TG    | Landry2018 <sup>22</sup> | USA. Los Angeles, CA. Hispanics.           | 99         | g = 0.31 [-0.09, 0.72].<br>*,\$\$: Table1   |
|       | Parker2010 <sup>19</sup> | USA. NHANES 1999-2006. General population. | 3,126      | g = 0.31 [-0.09, 0.72].<br>*: Table 3       |

\*: Calculated by authors from primary data

\$\$: FIS levels combined by mean and pooled-SD

**Excluded studies:**

The study by Mahmoodi et al.<sup>23</sup> did not separate pediatric and adult data. The study by Lee et al.<sup>24</sup> contained overlapping NHANES data.



**Table 10. Pediatric studies with sufficient data to retrieve or calculate the odds ratio for dyslipidemias between food secure and food insecure patients. There were not sufficient data to synthesize for a specific dyslipidemia (i.e. high LDL, or low HDL)**

| Lipids | Study                    | Patients                        | Study Size | Criteria        | Results                                      | Covariates  |
|--------|--------------------------|---------------------------------|------------|-----------------|--|---|
| LDL    | Tester2016 <sup>25</sup> | USA. NHANES 2003-2010.          | 1,072      | LDL > 110 mg/dL | AOR = 0.84 [0.58, 1.20].<br>*, \$\$: Table 3 | Age, sex, race, marital status, education, adiposity. |
| HDL    | Tester2016 <sup>25</sup> | USA. NHANES 2003-2010. Females. | 514        | HDL < 40 mg/dL  | AOR = 0.84 [0.58, 1.20].<br>*, \$\$: Table 3 | Age, sex, race, marital status, education, adiposity. |
|        |                          | USA. NHANES 2003-2010. Males.   | 558        |                 | AOR = 0.88 [0.50, 1.54].<br>*, \$\$ Table 3  |   |
|        |                          | Combined                        | 1,072      |                 | AOR = 0.85 [0.63, 1.16]                      |   |
|        | Holben2015 <sup>26</sup> | USA. NHANES 1999-2006.          | 7,435      | HDL < 40 mg/dL  | AOR = 1.35 [1.15, 1.58].<br>*, \$\$: Table 3 | Age, race/ethnicity, sex.                             |
| TC     | Tester2016 <sup>25</sup> | USA. NHANES 2003-2010. Females. | 1,072      | TC > 170 mg/dL  | AOR = 0.79 [0.59, 1.06].<br>*, \$\$: Table 3 | Age, sex, race, marital status, education, adiposity. |
| TG     | Tester2016 <sup>25</sup> | USA. NHANES 2003-2010.          | 1,072      | TG > 90 mg/dL   | AOR = 1.50 [1.11, 2.04].<br>*, \$\$: Table 3 | Age, sex, race, marital status, education, adiposity. |
|        | Holben2015 <sup>26</sup> | USA. NHANES 1999-2006.          | 7,435      | TG > 150 mg/dL  | AOR = 1.33 [0.98, 1.80].<br>*, \$\$: Table 3 | Age, race/ethnicity, sex.                             |

\*: Calculated by authors from primary data

\$\$: FIS levels combined by RE model

#: Combined by RE model

**Table 11. Adult studies with self-reported or chart review methodology**

| Study                       | Patients                       | Methodology   | Study Size |
|-----------------------------|--------------------------------|---------------|------------|
| Gibson 2019 <sup>27</sup>   | Adults with diabetes.          | Self-reported | 3433       |
| Sattler 2014 <sup>28</sup>  | GA senior adults w D2M.        | Self-reported | 243        |
| Stuff2008 <sup>29</sup>     | Mississippi Adults.            | Self-reported | 1457       |
| Fernandes2018 <sup>30</sup> | Portugal Seniors > 65 yrs old. | Self-reported | 1,885      |
| Mendy2018 <sup>31</sup>     | Mississippi Adults.            | Self-reported | 5870       |
| Bahadur2018 <sup>32</sup>   | USA. New Jersey. Children      | Chart review  | 486        |

## REFERENCES

1. Dixon, L. B., Winkleby, M. A. & Radimer, K. L. Dietary intakes and serum nutrients differ between adults from food-insufficient and food-sufficient families: Third National Health and Nutrition Examination Survey, 1988–1994. *The Journal of nutrition* **131**, 1232–1246 (2001).
2. Tayie, F. A. & Zizza, C. A. Food insecurity and dyslipidemia among adults in the United States. *Preventive medicine* **48**, 480–485 (2009).
3. Shariff, Z. M. *et al.* Food insecurity and the metabolic syndrome among women from low income communities in Malaysia. *Asia Pacific journal of clinical nutrition* **23**, 138 (2014).
4. Berkowitz, S. A. *et al.* Material need insecurities, diabetes control, and care utilization: Results from the Measuring Economic iNsecurity in Diabetes (MEND) study. *JAMA internal medicine* **175**, 257 (2015).
5. Moreno, G. *et al.* Latinos with diabetes and food insecurity in an agricultural community. *Medical care* **53**, 423 (2015).
6. Berkowitz, S. A., Baggett, T. P., Wexler, D. J., Huskey, K. W. & Wee, C. C. Food insecurity and metabolic control among US adults with diabetes. *Diabetes care* **36**, 3093–3099 (2013).
7. Ford, E. S. Food security and cardiovascular disease risk among adults in the United States: findings from the National Health and Nutrition Examination Survey, 2003–2008. *Preventing chronic disease* **10**, E202–E202 (2013).
8. Atiqah, A. N., Norazmir, M. N., Anuar, M. K., Fahmi, M. M. & Norazlanshah, H. Food security status: It's association with inflammatory marker and lipid profile among young adult. *International Food Research Journal* **22**, 1855 (2015).
9. Weigel, M. M., Armijos, R. X., Racines, M., Cevallos, W. & Castro, N. P. Association of household food insecurity with the mental and physical health of low-income urban Ecuadorian women with children. *Journal of environmental and public health* **2016**, (2016).
10. Shalowitz, M. U. *et al.* Food security is related to adult type 2 diabetes control over time in a United States safety net primary care clinic population. *Nutrition & diabetes* **7**, e277–e277 (2017).
11. Bermúdez-Millán, A. *et al.* Inflammation and Stress Biomarkers Mediate the Association between Household Food Insecurity and Insulin Resistance among Latinos with Type 2 Diabetes. *The Journal of nutrition* **149**, 982–988 (2019).
12. Smalls, B. L., Gregory, C. M., Zoller, J. S. & Egede, L. E. Assessing the relationship between neighborhood factors and diabetes related health outcomes and self-care behaviors. *BMC health services research* **15**, 1–11 (2015).
13. Weigel, M. M., Armijos, R. X., Hall, Y. P., Ramirez, Y. & Orozco, R. The household food insecurity and health outcomes of US–Mexico border migrant and seasonal farmworkers. *Journal of Immigrant and Minority Health* **9**, 157–169 (2007).
14. Shin, J.-I., Bautista, L. E., Walsh, M. C., Malecki, K. C. & Nieto, F. J. Food insecurity and dyslipidemia in a representative population-based sample in the US. *Preventive medicine* **77**, 186–190 (2015).
15. Shiue, I. People with diabetes, respiratory, liver or mental disorders, higher urinary antimony, bisphenol A, or pesticides had higher food insecurity: USA NHANES, 2005–2006. *Environmental Science and Pollution Research* **23**, 198–205 (2016).
16. Murillo-Castillo, K. D. *et al.* Food insecurity was associated with low quality diet and low HDL level in mothers of Northwest Mexico relying on fisheries for livelihood. *Nutr Hosp* **35**, 1379–1386 (2018).
17. Vercammen, K. A. *et al.* Food security and 10-year cardiovascular disease risk among US adults. *American journal of preventive medicine* **56**, 689–697 (2019).

18. Weigel, M. M. & Armijos, R. X. Food insecurity, Cardiometabolic health, and health care in US-Mexico border immigrant adults: An exploratory study. *Journal of immigrant and minority health* **21**, 1085–1094 (2019).
19. Parker, E. D., Widome, R., Nettleton, J. A. & Pereira, M. A. Food security and metabolic syndrome in US adults and adolescents: findings from the National Health and Nutrition Examination Survey, 1999–2006. *Annals of epidemiology* **20**, 364–370 (2010).
20. Faramarzi, E. *et al.* Association between food insecurity and metabolic syndrome in North West of Iran: Azar Cohort study. *Journal of Cardiovascular and Thoracic Research* **11**, 196 (2019).
21. Holben, D. H. & Pheley, A. M. Peer reviewed: Diabetes risk and obesity in food-insecure households in rural Appalachian Ohio. *Preventing chronic disease* **3**, (2006).
22. Landry, M. J. *et al.* Impact of food security on glycemic control among low-income primarily Hispanic/Latino children in Los Angeles, California: A cross-sectional study. *Journal of hunger & environmental nutrition* (2018).
23. Mahmoodi, M. R., Najafipour, H., Mohsenpour, M. A. & Amiri, M. The relationship between food insecurity with cardiovascular risk markers and metabolic syndrome components in patients with diabetes: A population-based study from Kerman coronary artery disease risk study. *Journal of research in medical sciences: the official journal of Isfahan University of Medical Sciences* **22**, (2017).
24. Lee, A. M., Scharf, R. J., Filipp, S. L., Gurka, M. J. & DeBoer, M. D. Food Insecurity Is Associated with Prediabetes Risk Among US Adolescents, NHANES 2003–2014. *Metabolic syndrome and related disorders* **17**, 347–354 (2019).
25. Tester, J. M., Laraia, B. A., Leung, C. W. & Mietus-Snyder, M. L. Peer reviewed: Dyslipidemia and food security in low-income US adolescents: National health and nutrition examination survey, 2003–2010. *Preventing Chronic Disease* **13**, (2016).
26. Holben, D. H. & Taylor, C. A. Food insecurity and its association with central obesity and other markers of metabolic syndrome among persons aged 12 to 18 years in the United States. *J Am Osteopath Assoc* **115**, 536–43 (2015).
27. Gibson, D. M. Food Insecurity, Eye Care Receipt, and Diabetic Retinopathy Among US Adults with Diabetes: Implications for Primary Care. *Journal of general internal medicine* **34**, 1700–1702 (2019).
28. Sattler, E. L. P., Lee, J. S. & Bhargava, V. Food insecurity and medication adherence in low-income older Medicare beneficiaries with type 2 diabetes. *Journal of nutrition in gerontology and geriatrics* **33**, 401–417 (2014).
29. Stuff, J. E. *et al.* Household food insecurity and obesity, chronic disease, and chronic disease risk factors. *Journal of hunger & environmental nutrition* **1**, 43–62 (2007).
30. Fernandes, S. G. *et al.* Food insecurity in older adults: Results from the epidemiology of chronic diseases cohort study 3. *Frontiers in medicine* **5**, 203 (2018).
31. Mendy, V. L. *et al.* Food insecurity and cardiovascular disease risk factors among Mississippi adults. *International journal of environmental research and public health* **15**, 2016 (2018).
32. Bahadur, K., Pai, S., Thoby, E. & Petrova, A. Frequency of food insecurity and associated health outcomes in pediatric patients at a federally qualified health center. *Journal of community health* **43**, 896–900 (2018).