

ORIGINAL RESEARCH

Misdiagnosis of Diverticulitis After a Prior Diagnosis of Irritable Bowel Syndrome (IBS)

George F. Longstreth, MD, Carrie Wong, MD, and Qiaoling Chen, MS

Introduction: Irritable bowel syndrome (IBS) and diverticulitis share clinical features. Misdiagnosed diverticulitis can cause unnecessary antibiotic therapy. Among IBS and non-IBS patients, we compared outpatient, clinically diagnosed (no computed tomography) diverticulitis rates. Among primary-care, diverticulitis-diagnosed IBS patients, we assessed imaged diverticulosis and probable misdiagnosed diverticulitis.

Methods: Among 3836-patient IBS and 67,827-patient non-IBS cohorts identified from 2000 to 2002, we retrospectively compared the frequency of outpatient, clinically diagnosed, antibiotic-treated diverticulitis from 2003 to endpoints of December 31, 2017, disenrollment, or death. In IBS patients, we reviewed records of initial, primary care-managed episodes for misdiagnosis.

Results: In 3836 clinically diagnosed IBS and 63,991 non-IBS cohorts, followup (median [interquartile range]) was 12.4 (3.9 to 15.0) years versus 10.2 (3.0 to 15.0) years, respectively ($P < .001$). The incidence rate/1000 patient-years (95% CI) of diagnosed diverticulitis was 14.0 (12.1 to 16.3) and 4.2 (4.0 to 4.5), respectively, (crude incidence rate ratio, 3.3 [2.8–3.9]; $P < .001$). Of examined features, the diagnosis of IBS was most strongly associated with clinically diagnosed diverticulitis (adjusted incidence rate ratio [95% CI]; 2.64 [2.21–3.15], $P < .001$). Of initial diverticulitis diagnoses in 189 IBS patients, objective evidence-based diagnosis revision or exclusion occurred in 12 (6.3%), including 6 hospitalized; 29 (15.3%) had colon imaging before and/or afterward without diverticulosis reported; 143 (75.1%) had image-documented diverticulosis; and 6 (3.2%) had no imaging.

Conclusions: Outpatient, clinically diagnosed, antibiotic-treated diverticulitis was increased 3-fold in IBS patients. Primary care clinical misdiagnosis of initial episodes occurred in 1 of 5 patients, but additional misdiagnosis due to misattribution of IBS pain to diverticulitis is suggested. (J Am Board Fam Med 2020;33:549–560.)

Keywords: Antibiotics, Diagnostic Errors, Incidence, Irritable Bowel Syndrome, Diverticulitis, Outpatients, Primary Health Care, Retrospective Studies

Introduction

Irritable bowel syndrome (IBS), a common functional disorder, is clinically diagnosed by typical symptoms and exclusion of organic disease, usually by limited testing. It is characterized by recurrent

abdominal pain and disordered bowel habits.¹ Colonic diverticulosis is also common, but only a minority of patients with it develop acute diverticulitis.^{2,3} Abdominal pain is the most common gastrointestinal symptom prompting outpatient visits,⁴ and diverticulitis is often diagnosed in outpatients.^{5,6} Abdominal pain varies from mild to severe in both IBS⁷ and diverticulitis, and abdominal tenderness is found with both disorders.^{1,7–9} Furthermore, many patients with diverticulitis report constipation or diarrhea.^{8,10,11} These shared clinical features, the frequent absence of fever and leukocytosis,⁸ and common uncertainty about whether a patient has diverticulosis promote confusion of IBS with diverticulitis.^{11,12} Outpatients diagnosed with diverticulitis are often treated with antibiotics, so misdiagnosis can result in unnecessary antibiotic therapy.

This article was externally peer reviewed.

Submitted 17 September 2019; revised 28 January 2020; accepted 29 January 2020.

From the Department of Gastroenterology, Kaiser Permanente–Southern California, San Diego (GFL, CW); Department of Research & Evaluation, Kaiser Permanente–Southern California, Pasadena (QC).

Funding: Kaiser Permanente–Southern California internal research funding.

Conflicts of interest: The authors deny any conflicts of interest.

Corresponding author: George F. Longstreth, MD, Department of Gastroenterology, Kaiser Permanente–Southern California, 4152 Palmetto Way, San Diego, CA 92103 (E-mail: gflongstreth@gmail.com).

In a retrospective long-term cohort study, we aimed to 1) compare health examinees with and without IBS regarding the frequency of outpatient clinically diagnosed (no computed tomography), antibiotic-treated diverticulitis and assess associated patient features; and 2) assess imaging reports of diverticulosis, a prerequisite for diverticulitis, and documented misdiagnosis among IBS patients who had an initial primary care diagnosis of diverticulitis.

Methods

Study Setting, Patients, and Data Sources

We enrolled consecutive patients ≥ 18 years of age who had undergone a health screening evaluation during 3 years in the San Diego service area of Kaiser Permanente–Southern California (KPSC), an integrated, prepaid health care system whose members reflect the diversity of Southern California by census.¹³ All KPSC members have a primary care physician. On October 7, 2007 article records were replaced by electronic medical records. Before that date complete records, including radiologic imaging reports, may not have always been available at outpatient visits; beginning then comprehensive electronic records were uniformly available. Electronic databases included the Charlson Morbidity Index (comprised of potentially life-limiting diseases), comprehensive pharmacy dispensing data and diagnosis coding of all patient encounters using the *International Classification of Diseases, Ninth Revision* (ICD-9) before October 2015 and the *International Classification of Diseases, Tenth Revision* (ICD-10) thereafter. Coding staff review codes for all emergency department and inpatient encounters and samples of outpatient encounters.

Identification of IBS and Non-IBS Cohorts

Subjects had previously submitted a self-completed, pre-examination questionnaire eliciting demographic, symptom, and medical/surgical history data, between 2000 and 2002 as part of a separate Institutional Review Board–approved project.¹⁴ As previously described, we validated a question on whether a physician had diagnosed IBS by comparing the responses with documented physician diagnosis in the medical records. Agreement occurred in 83.6% of 201 patients ($\kappa = 0.82$).¹⁴ Therefore, examinees were placed in the IBS or non-IBS cohorts according to the question response. We excluded

patients initially without IBS who were diagnosed with IBS during followup as identified by ICD-9 code 564.1 and ICD-10 code K58.

Identification of Diverticulitis

We identified diverticulitis from an outpatient ICD-9 code (562.11 or 562.13) or ICD-10 code (K57.20, K57.30, K57.92, or K57.93) and pharmacy dispensing of an antibiotic ≤ 7 days after diagnosis. The outpatient settings comprised nonhospital offices, including after-hours urgent care clinics. Emergency department visits were not included. Most of the practitioners were primary care physicians, but nurse practitioners and physician assistants working under their supervision likely diagnosed some cases. As previously published, we developed this case finding method in a pilot sample by assessing multiple computerized algorithms based on electronic data, including diagnosis codes, dispensing of antibiotics and pain medication and/or pain diagnoses, and excluding patients with infections and/or conditions that could mimic diverticulitis. Testing the method in 1502 randomly selected KPSC members revealed a sensitivity of 84.6% and positive predictive value of 98.1% for physician-diagnosed diverticulitis in outpatients.¹⁵ As we assessed only clinically diagnosed diverticulitis, we excluded patients who had undergone computed tomography (CT) of the abdomen and/or pelvis with or without oral contrast ≤ 14 days before diagnosis, identified by Current Procedural Terminology codes 74176 to 74178, 74150, 74160, and 74170. We assessed the frequency of outpatient, clinically diagnosed, antibiotic-treated diverticulitis diagnosis from January 1, 2003 to December 31, 2017.

Evaluation of the IBS Cohort for Misdiagnosis and Diverticulosis Documentation

Two gastroenterologists independently reviewed the medical records of patients in the IBS cohort who had an initial episode of outpatient clinically diagnosed, antibiotic-treated diverticulitis. They recorded data from the outpatient visits when the diagnoses were made, including clinical features and leukocyte counts. Fever was defined as temperature $> 37.5^\circ\text{C}$ and leukocytosis as $> 11,500$ leukocytes/mm³. They searched outpatient visit records, hospitalization summaries, and laboratory and pathology reports following the visit for evidence of a revised diagnosis with changed therapy or exclusion of diverticulitis, the latter requiring

CT ≤ 3 days after diagnosis that revealed no colonic wall thickening, inflammation of peri-colic fat, or other findings of diverticulitis. They recorded all barium enema, flexible sigmoidoscopy, colonoscopy, and abdominopelvic CT procedures performed before and after the diagnosis and considered the patient as having diverticulosis if a single procedure reported diverticulosis of any severity. Patients with multiple imaging tests were classified as having no diverticulosis only if no procedure reported it, either before or after the diagnosis. The reviewers resolved any discrepancies by joint record review.

Statistical Analysis

We summarized categorical data as percentages and continuous data as mean \pm standard deviation (SD) or median (interquartile range) as appropriate. We compared categorical data with the χ^2 test and continuous data with the Student's t -test. Incidence rates per 1000 patient-years were calculated and corresponding 95% CIs were estimated using robust Poisson regression. Controlling for age, sex, race/ethnicity, and all other medical and surgical history variables from the patient questionnaires (Table 1), multivariable Poisson regression was fitted to derive the adjusted incidence rate ratio of diverticulitis in the IBS cohort versus the non-IBS cohort. All tests were 2 tailed, and the level of significance was $< .05$. We used SAS statistical software (version 9.4; SAS Institute, Cary NC).

Results

Patient Features

Demographic and history features differed between the 3836 subjects in the IBS cohort and the 63,991 subjects in the non-IBS cohort (Table 1), as previously described in the larger cohorts from which they were derived.¹⁴ Length of followup was 12.4 (3.9 to 15.0) years versus 10.2 (3.0 to 15.0) years in IBS and non-IBS cohorts, respectively ($P < .001$).

Diverticulitis Diagnosis Frequency and Associations in IBS and non-IBS Cohorts

Of 89,008 examinees, we excluded 21,181 as detailed in Figure 1, yielding 67,827 examinees, 3836 (5.7%) IBS and 63,991 (94.3%) non-IBS examinees. Additional exclusions by electronic database criteria yielded 290 IBS individuals with 523

episodes and 1669 non-IBS individuals with 2455 episodes.

At least 1 episode of clinically diagnosed, antibiotic-treated diverticulitis occurred in 290 of 3836 (7.6%) and 1669 of 63,991 (2.6%) outpatients with and without IBS, respectively ($P < .001$). The incidence rate (95% CI) per 1000 patient-years of outpatient clinical diagnosis and antibiotic treatment was 14.0 (12.1 to 16.3) versus 4.2 (4.0 to 4.5) in IBS and non-IBS cohorts, yielding a crude incidence rate ratio of 3.3 (2.8 to 3.9) ($P < .001$).

Multivariate Poisson regression revealed that of the patient features, IBS was most strongly associated with outpatient diagnosis (Table 2). Age was only negligibly associated, and a race/ethnicity association varied from negative associations in Asians/Pacific Islanders and blacks to a positive association in Hispanics compared with whites. Frequent headaches, current smoking, hypertension, cholecystectomy, and back surgery were positively associated, and vegetarianism and diabetes were negatively associated. The Charlson Comorbidity Index was not associated with the diagnosis.

Initial Outpatient, Clinically Diagnosed, Antibiotic-Treated Diverticulitis in the IBS Cohort

To identify initial episodes of diverticulitis during followup in the IBS cohort, we excluded patients electronically from the total 3836-patient IBS cohort for a diverticulitis history, lack of outpatient diagnosis, use of CT and lack of antibiotic treatment, yielding 204 patients (Figure 2). Record review led to exclusion of 15 additional patients, yielding a final cohort of 189 IBS patients with an initial episode (Figure 3). The age (mean SD) at diagnosis was 65 ± 12.7 years, and 142 (75.1%) were female. Clinical and laboratory records were available on all patients. Temperature was recorded on 118 (62.2%) patients. Abdominal pain, tenderness, and fever occurred in 181 of 189 (95.8%), 176 of 189 (93.2%) and 3 of 118 (2.5%) patients, respectively. Of 76 (40.2%) patients who had a leukocyte count performed, 26 (34.2%) had leukocytosis.

Misdiagnosis and Diverticulosis Documentation in the IBS Cohort

Figure 3 also summarizes patients whose diverticulitis diagnosis was revised or excluded and the results of colon imaging studies. Within 2 weeks after antibiotics were dispensed for diverticulitis, 12 (6.3%) patients were found to have objective

Table 1. Baseline Demographic, Medical, and Surgical Features in 67,827 Examinees with and without IBS (2000–2002)

Feature	IBS (n = 3836)	No IBS (n = 63,991)	P Value
Demographic			
Age, mean + SD, y	54.3 + 14.1	51.0 + 15.1	<.001
Sex, n (%)			<.001
Male	1139 (29.7)	35,015 (54.7)	
Female	2697 (70.3)	28,976 (45.3)	
Race/ethnicity, n (%)			<.001
White	3026 (78.9)	41,215 (64.4)	
Asian	124 (3.2)	5656 (8.8)	
Black	142 (3.7)	3801 (5.9)	
Hispanic	399 (10.4)	10,280 (16.1)	
American Indian	11 (0.3)	177 (0.3)	
Pacific Islander	22 (0.6)	786 (1.2)	
Multiple categories	112 (2.9)	2076 (3.2)	
Education, n (%)			<.001
Some high school	201 (5.2)	4518 (7.1)	
Some college	1993 (52.0)	32,307 (50.5)	
College and above	1642 (42.8)	27,166 (42.5)	
Medical history, n (%)			
Charlson Comorbidity Index			<.001
0	3334 (86.9)	57,712 (90.2)	
1 to 2	480 (12.5)	5931 (9.3)	
3 or more	22 (0.6)	348 (0.5)	
Anxious	1469 (38.3)	12,856 (20.1)	<.001
Worried about being ill	1053 (27.5)	10,363 (16.2)	<.001
Depression	1005 (26.2)	7545 (11.8)	<.001
Frequent headaches	1149 (30.0)	10,555 (16.5)	<.001
Smoking			<.001
Never	2173 (56.6)	36,105 (56.4)	
Past	1361 (35.5)	21,650 (33.8)	
Current	302 (7.9)	6236 (9.7)	
Alcohol			<.001
Daily	286 (7.5)	5651 (8.8)	
Never, hardly ever	2321 (60.5)	35,085 (54.8)	
Less than daily	1229 (32.0)	23,255 (36.3)	
Vegetarianism	135 (3.5)	995 (3.1)	.166
Verbal or physical abuse	791 (20.6)	6659 (10.4)	<.001
Sexual abuse	599 (15.6)	4421 (6.9)	<.001
Diabetes	185 (4.8)	3088 (4.8)	.993
Fibromyalgia	309 (8.1)	698 (1.1)	<.001
Hypertension	1244 (32.4)	16,887 (26.4)	<.001
Painful intercourse*	411 (15.2)	2681 (9.3)	<.001
Chronic pelvic pain*	164 (6.1)	627 (2.2)	<.001
Painful urination*	111 (4.1)	610 (2.1)	<.001
Frequent urination*	1034 (38.3)	6902 (23.8)	<.001
Irregular periods*	383 (14.2)	4259 (14.7)	.485
Painful periods*	260 (9.6)	2902 (10.0)	.535

Continued

Table 1. Continued

Feature	IBS (n = 3836)	No IBS (n = 63,991)	P Value
Surgical history, n (%)			
Cholecystectomy	487 (12.7)	2617 (4.1)	<.001
Appendectomy	837 (21.8)	7731 (12.1)	<.001
Hysterectomy*	920 (34.1)	5206 (18.0)	<.001
Back surgery	174 (4.5)	1926 (3.0)	<.001
Coronary artery surgery	118 (3.1)	1691 (2.6)	.105
Peptic ulcer surgery	19 (0.5)	235 (0.4)	.207

IBS, irritable bowel syndrome; SD, standard deviation.

*Results from women only.

evidence of another etiology for their presenting features (11) or lack of diverticulitis on CT (1). As detailed in Table 3, diseases in the 11 patients were *Clostridium difficile* colitis (2), urinary tract infection (2), Crohn's disease (2), cholecystitis (1), small bowel obstruction (1), sigmoid volvulus (1), and ovarian cyst (1), and cholecystitis and pancreatitis (1). Six of the patients were hospitalized, and all 12 survived. CT was performed in 3 additional patients 1 to 7 days after diagnosis, which confirmed diverticulitis in all.

Twenty-nine (15.3%) patients had no diagnosis revision, but they had colon imaging that did not reveal diverticulosis before and/or after diagnosis. As detailed in Appendix, the age of these patients ranged from 25 to 84 years, 26 (89.7%) were female, and at least 1 procedure revealing no diverticulosis occurred before, after or both before and after diagnosis in 5, 15, and 9 patients, respectively. Nineteen (65.5%) patients had > 1 negative procedure, including 11 who underwent ≥ 3 procedures.

Combined with the revised diagnoses or CT exclusion of diverticulitis in 12 patients, a lack of diverticulosis on imaging supported misdiagnosis in 41 of 189 (21.7%) patients. One hundred forty-two (75.1%) patients (age 66.3 ± 11.4 years; 58 [40.8%] < 65 years; 102 [71.8%] female) had a diagnosis that was not revised nor excluded by CT and had imaging before and/or after the episode that revealed diverticulosis. Six (3.2%) had no colon imaging.

Discussion

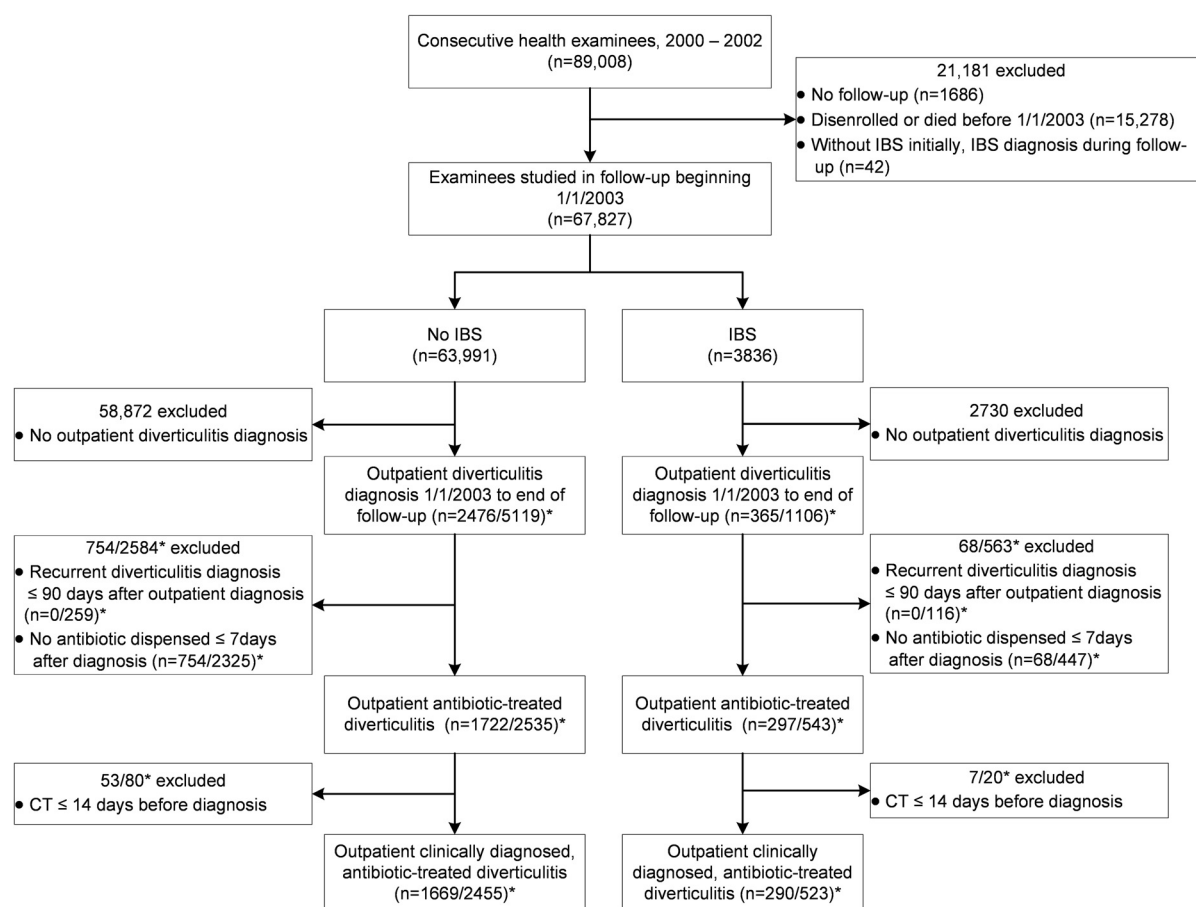
In this retrospective, long-term, cohort study of health examinees, patients with an IBS diagnosis had a 3-fold increase in the frequency of outpatient,

clinically diagnosed and antibiotic-treated diverticulitis compared with those without IBS. Of the features assessed in association with diverticulitis, the strongest association was found with diagnosis of IBS. In patients with IBS and an initial episode of diverticulitis managed in primary care, diagnosis revision and changed therapy occurred in 6.3% of patients. An additional 15.3% of patients had colon imaging studies before and/or after the diagnosis that reported no diverticulosis. These findings support misdiagnosis in 1 of 5 patients.

Published evidence is lacking to support such a strong association between IBS and diverticulitis, as we found. An association was reported between IBS, especially diarrhea-predominant IBS, and diverticulosis only in patients aged ≥ 65 years, but not with diverticulitis.¹⁶ Another survey found an association between IBS and diverticulosis only in patients > 60 years but did not assess diverticulitis.¹⁷ We did not determine bowel habit predominance; 40.8% who had diverticulosis diagnosed and lacked evidence of misdiagnosis were < 65 years when initially treated for diverticulitis. Therefore, it seems unlikely that increased diverticulosis alone explained the 3-fold increased rate of physician-diagnosed diverticulitis in the IBS cohort.

Diagnosis of diverticulitis in our IBS cohort was primarily based on abdominal pain and tenderness, as fever and leukocytosis were infrequent. Surgeons have also reported on the scarcity of objective evidence of diverticulitis diagnosed in most clinic patients and suggested that many outpatients have mild disease or no diverticulitis at all.^{6,18} However, we are unaware of other investigations that compared the frequencies of the outpatient clinical diagnosis of diverticulitis in patients with and without

Figure 1. Flowchart summarizing derivation of the cohorts with and without irritable bowel syndrome by electronic database criteria. *Number of unique patients/number of episodes. Abbreviations: CT, computed tomography; IBS, irritable bowel syndrome.



IBS or attempted to document misdiagnosis in IBS patients.

Some of the patients had life-threatening disorders. Other patients lacked diagnosis revision or CT exclusion of diverticulitis and had colon imaging, two thirds with multiple procedures, without a report of diverticulosis.

These 2 types of misdiagnosis may not fully explain the greatly increased diverticulitis frequency in IBS patients. Just as increased abdominal and pelvic surgery in the IBS cohort was attributed to symptom misattribution,¹⁴ abdominal pain and tenderness could have been incorrectly attributed to diverticulitis. Such misattribution was proven in only 1 case, but few patients had CT before symptoms resolved to allow this assessment, which is typical in outpatient settings. There is evidence of a deficiency in physician awareness of features of IBS patients, including their health care-seeking beha-

avior. Surveys of American¹⁹ and European²⁰ primary care physicians revealed only a minority knew important aspects of IBS or used the Rome diagnostic criteria. About three quarters of American primary care physicians regarded IBS as a diagnosis of exclusion and relied less on symptoms and ordered more tests than specialists.²¹ To our knowledge, primary care physicians' awareness of abdominal tenderness in IBS has not been systematically studied, although a landmark publication almost 60 years ago⁷ detailed tenderness in over 60% of patients. Furthermore, patient reactions to abdominal palpation can help distinguish functional from structural disorders.²²

Limitations include our inability to identify which IBS patients with diverticulosis and no other etiology evident for their acute symptoms, had diverticulitis versus a flare of IBS or another disorder. We cannot exclude the possibility that IBS was

Table 2. Patient Features Associated with Clinically Diagnosed Diverticulitis in 1959 Examinees, 290 with IBS and 1669 Without IBS, During Followup (2003 to 2017)

Feature	Adjusted IRR	95% CI	P Value
Irritable bowel syndrome	2.64	2.21 to 3.15	<.001
Age, y	1.02	1.01 to 1.02	<.001
Race/ethnicity			<.001
White		Reference	
Asian/Pacific Islander	0.62	0.49 to 0.79	<.001
Black	0.73	0.54 to 1.00	.047
Hispanic	1.53	1.29 to 1.83	<.001
Other	1.04	0.75 to 1.18	.817
Frequent headaches	1.46	1.25 to 1.70	<.001
Smoking			.028
Never		Reference	
Past	1.17	0.96 to 1.48	.106
Current	1.16	1.03 to 1.31	.012
Vegetarianism	0.65	0.45 to 0.93	.020
Diabetes	0.69	0.53 to 0.91	.007
Hypertension	1.35	1.19 to 1.54	<.001
Cholecystectomy	1.47	1.18 to 1.85	.001
Back surgery	1.41	1.09 to 1.81	.009

IRR, incidence rate ratio; IBS, irritable bowel syndrome; CI, confidence interval.

incorrectly diagnosed and that in follow-up diverticulitis was mimicked by another disease or coexisted with it, such as the Crohn's disease in 2 patients; however, most of the misdiagnoses were acute diseases. Symptoms of patients attributed to IBS are infrequently changed to another etiology over the long term.²³ The high prevalence of diverticulosis and usual requirement of CT to confirm diverticulitis challenge any study of clinically diagnosed diverticulitis, retrospective or prospective. The predominant bowel pattern of the IBS patients was not determined, but all subtypes are characterized by abdominal pain.¹ We did not investigate misdiagnosis in subjects without IBS.

Strengths of the study include large cohorts with validated methods of identifying physician-diagnosed IBS¹⁴ and diverticulitis¹⁵ that were assessed for a median of at least 10 years. We utilized comprehensive databases in a prepaid health care system, double-physician record review and objective evidence for revised diagnoses and exclusion of diverticulitis. We had computerized laboratory, radiology, pathology, physician diagnosis, and other data on all patients, enabling us to detect revised

diagnoses by objective criteria. Agreement rates between colon imaging procedures range from 60% to 82%, but we accepted the presence or absence of diverticulosis revealed by any colon imaging procedure.¹⁸ We required absence of diverticulosis of any severity from all colon imaging studies in IBS patients with multiple procedures before and/or after initial diverticulitis diagnosis to classify them as not having diverticulosis. With this method, we considered some patients as having diverticulosis if an imaging test revealed diverticulosis several years after their initial diverticulitis diagnosis, even if multiple prediagnosis procedures reported no diverticulosis. Patients with negative imaging before initial diagnosis and no subsequent imaging could have developed diverticulosis before diagnosis. However, three quarters of patients classified as without diverticulosis had none reported on imaging after or both before and after diagnosis. Therefore, our strict definition of absent diverticulosis at any time likely classified some patients as having diverticulosis who did not have the disorder when diverticulitis was diagnosed. To minimize potential diagnostic bias related to a prior outpatient diagnosis, we assessed only the initial episodes in the IBS cohort. Our

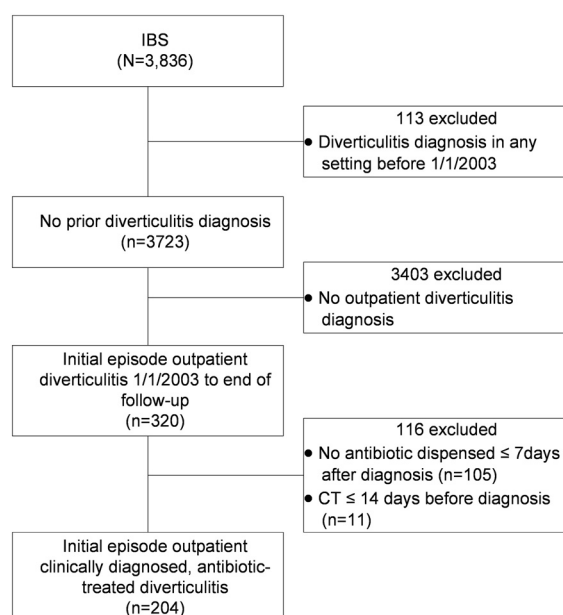
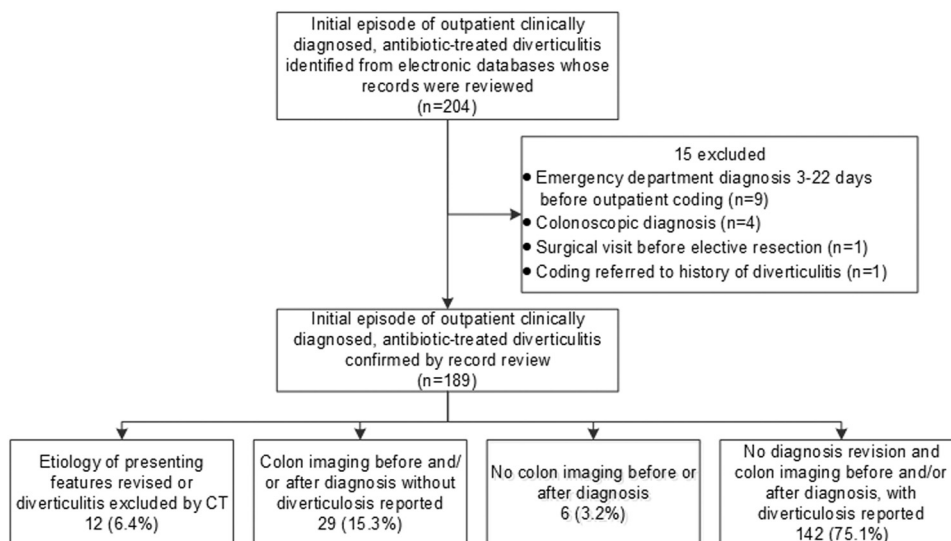
Figure 2. Flowchart summarizing derivation by electronic database criteria of the subcohort of irritable bowel syndrome patients who had an initial episode of outpatient clinically diagnosed, antibiotic-treated diverticulitis during followup (2003 to 2017). Abbreviations: CT, computed tomography; IBS, irritable bowel syndrome.

Figure 3. Flowchart summarizing further derivation by record review of the subcohort of irritable bowel syndrome (IBS) patients who had an initial episode of outpatient clinically diagnosed, antibiotic-treated diverticulitis during follow-up (2003 to 2017). Patients are classified according to revision or exclusion of the diagnosis, colon imaging and diverticulosis documentation.



findings seem generalizable because similar proportions (about 70%) of diagnosed patients are managed as outpatients in our health care system and in a university system,^{5,6} and most outpatients with abdominal pain initially present to primary physicians.

Our findings are relevant to research and practice. Studies in which case finding includes outpatient clinical diagnoses could overestimate cases. In patients with chronic recurrent pain, physicians should be circumspect when a patient reports pain that was previously attributed to diverticulitis from clinical features alone.

Accepted practice calls for physicians to consider how IBS patients' abdominal pain and associated symptoms compare with their usual recurrent symptoms. Consideration of the psychosocial background and prior health care-seeking behavior, including amplified reporting of multiple symptoms and consultation^{24,25} is particularly important in patients with severe pain.^{26,27} However, based on clinical and laboratory findings alone⁸ both primary physicians and gastroenterologists will be uncertain as to whether some patients have diverticulitis.

How should physicians manage IBS patients with suspected diverticulitis? The American Gastroenterological Association suggested selective rather than the traditional routine use of antibiotics in

uncomplicated diverticulitis,²⁸ and additional data supported the safety of management without antibiotics.²⁹ Although mistaken diagnosis of diverticulitis in IBS patients likely represents a minority of all outpatients treated for diverticulitis, avoiding antibiotic use in suspected diverticulitis would reduce the increased rates of antibiotic use and *Clostridium difficile* infection that we previously documented in the IBS cohort.³⁰ Routine antibiotic treatment of diverticulitis may be more likely in the United States than in England where antibiotic use and *Clostridium difficile* infection have decreased.³¹ It is prudent to manage selected outpatients with close observation and without antibiotics after careful clinical evaluation and relevant laboratory testing. The mean duration of episodically increased abdominal pain in IBS is 3 days.³² Failure to improve could lead to consideration of other tests and/or antibiotic treatment.

In conclusion, diverticulitis was diagnosed much more often in outpatients with IBS than those without IBS. This finding was partly attributable to mistaken attribution of presenting features of other diseases to diverticulitis. In other patients, absence of diverticulosis indicated misdiagnosis. Although the findings revealed misdiagnosis in about 1 of 5 patients, we speculate that additional patients had misattribution of abdominal pain and tenderness to

Table 3. Twelve Patients with Irritable Bowel Syndrome Whose Diagnosis of Diverticulitis Was Subsequently Revised or Excluded (2003 to 2017)

Case # Age Sex	Presenting Features and Therapy of Clinically Diagnosed Diverticulitis	Prior Colon Imaging	Later Events, Revised Diagnosis, Therapy and Outcome
1 6 F	Abdominal pain, diarrhea ×3 weeks, generalized abdominal tenderness. T 36.6°C, Long-term cephalixin usage for cystitis. Leukocytes 7900/mm ³ . Ciprofloxacin/metronidazole.	Barium enema 8 years before—diverticulosis	Hospitalized 2 days later, diarrhea and weakness. CT—no diverticulitis, C. difficile toxin-positive colitis , acute renal failure. Vancomycin—recovered. IBS symptoms during 4.3-year followup.
2 90 F	Diarrhea, mild LLQ pain ×1 week. Took amoxicillin or cephalixin daily in cycles until 10 weeks before, then took vancomycin for unproven <i>C. Difficile</i> infection until 2 weeks before. T 36.8°C, LLQ tenderness. Leukocytes 11,600/mm ³ . Ciprofloxacin/metronidazole.	CT 0.4 years before, barium enema 8.3 years before—diverticulosis	Hospitalized 2 weeks later, severe bloody diarrhea. CT—sigmoid/descending colon wall thickening. Flexible sigmoidoscopy— severe pseudomembranous colitis. C. difficile toxin-positive . Vancomycin—recovered. Recurrent antibiotic-induced <i>C. difficile</i> diarrhea before death from heart failure 4.7 years later.
3 77 F	Low abdominal pain ×2 days. T 36.9°C, LLQ tenderness. Leukocytes 9900/mm ³ . Amoxicillin/metronidazole.	Barium enema 6 years before—diverticulosis	Urinalysis— urinary tract infection . Therapy changed: Ciprofloxacin/metronidazole later the same day—recovered. Diverticulitis diagnosed clinically again 4.1 year later. IBS symptoms during 11-year followup.
4 81 F	Low abdominal pain ×1 day. T 37.4°C, low abdominal tenderness. Leukocytes 12,700/mm ³ . Ciprofloxacin/metronidazole	CT 0.3 year before, colonoscopy 0.4 year before, barium enema 11 years before—diverticulosis	Urinalysis— urinary tract infection . Therapy changed: Amoxicillin clavulanate 6 days later—recovered. Diverticulitis diagnosed clinically again 0.2 year later. Died from cancer 2.6 years later.
5 48 M	LLQ pain, urgency, bloody stool ×4 days. T 37.1°C, LLQ tenderness. Leukocytes 8400/mm ³ . Ciprofloxacin/metronidazole.	None	CT 2 days later—sigmoid wall thickening without diverticulosis. Symptoms persisted. Colonoscopy 3.5 months later— colitis . Drug therapy-refractory. Proctocolectomy (Crohn's disease) 2.6 years later. Stable during 10.8-year followup.
6 36 F	Abdominal pain, diarrhea ×3 weeks. T 36.3°C, low abdominal tenderness. Leukocyte count not done. Ciprofloxacin/metronidazole.	None	Flexible sigmoidoscopy 6 days later— Crohn's disease . Erythema nodosum, arthritis 8 days later. Drug therapy—did well during 2.4-year followup.
7 89 F	"LLQ pain" ×3 days, history of cholecystitis. T 37.5°C, "LLQ tenderness." On penicillin for dental disease. Leukocytes 8600/mm ³ . Metronidazole added.	Colonoscopy 2.1 year before, CT 2.4 years before—diverticulosis.	Hospitalized 12 hours later, pain worse. Surgeon noted mid-abdominal pain, epigastric tenderness. Ultrasound—gallstones, gallbladder wall thickened— cholecystitis . Amoxicillin clavulanate—recovered. Occasional low abdominal pain until death from pneumonia 2.5 years later.
8 77 M	Left abdominal pain ×1 day, history of metastatic ileal carcinoid and 2 episodes small bowel obstruction. T 36.8°C, left abdominal tenderness. Leukocytes 6700/mm ³ . Ciprofloxacin/metronidazole.	CT 1.2 years before, colonoscopy 7.2 years before—no diverticulosis.	Hospitalized 1 day later, pain worse, CT— small bowel obstruction . Resolved. Death from carcinoid 2.3 years later.
9 81 F	Low abdominal pain, diarrhea ×10 days. T 36.7°C, low abdominal tenderness. Leukocyte count not done. Ciprofloxacin.	Barium enema 9.5 years before—no diverticulosis	Hospitalized 5 days later, pain worse. CT— sigmoid volvulus . Colonoscopic detorsion—recovered. No visits for abdominal pain until death from cancer 1.7 years later.

Continued

Table 3. Continued

Case # Age Sex	Presenting Features and Therapy of Clinically Diagnosed Diverticulitis	Prior Colon Imaging	Later Events, Revised Diagnosis, Therapy and Outcome
10 50 F	LLQ pain \times 1 day. T 36.4°C, LLQ tenderness. Leukocytes 9800/mm ³ . Ciprofloxacin/metronidazole.	Flexible sigmoidoscopy 1.4 years before, colonoscopy 0.8 years before—no diverticulosis.	To ED 2 days later, pain persistent. CT—4.6-cm left ovarian cyst . Oophorectomy (cystadenoma) 6 weeks later. No visits for abdominal pain during 4-year followup.
11 67 M	Mid-abdominal pain, \times 1 day. T 37.1°C, “LLQ tenderness.” Leukocytes 15,300/mm ³ . Ciprofloxacin/metronidazole	Colonoscopy 0.7 years before—diverticulosis	Hospitalized 13 days later, pain persisted, worsened. Severe RUQ tenderness. Leukocytes 18,300/mm ³ . CT—gallstones, gallbladder wall thickened with surrounding edema. Lipase, liver tests increased. Cholecystitis, pancreatitis . Cholecystectomy (chronic cholecystitis with focal gangrene)—recovered. Occasional IBS symptoms during 7.2-year followup.
12 86 F	Presenting history, examination, temp data unavailable. Leukocyte count not done. Ciprofloxacin/metronidazole	None	To ED 3 days later due to vomiting, bloating after starting antibiotics. CT— diverticulosis without diverticulitis. Drug-induced symptoms . Antibiotics stopped. Recovered. Many visits for IBS symptoms, depression, anxiety and 3 more nondiagnostic CTs done for abdominal pain before general decline and death 7.2 years later.

CT, computed tomography; ED, emergency department; F, female; M, male; IBS, irritable bowel syndrome; LLQ, left lower quadrant; RUQ, right upper quadrant; T, temperature.
Revised Diagnoses in Bold.

diverticulitis. In view of the common uncertainty of outpatient diverticulitis diagnosis and safety of treating many documented cases without antibiotics, it is advisable to consider withholding these drugs in suspected cases. Further research could aim to identify clinical features that improve the accuracy of clinical diagnosis in primary care.

To see this article online, please go to: <http://jabfm.org/content/33/4/549.full>.

References

- Lacy BE, Mearin F, Chang L, et al. Bowel disorders. *Gastroenterology* 2016;150:1393–1407.e5.
- Peery AF, Keku TO, Martin CF, et al. Distribution and characteristics of colonic diverticula in a United States screening population. *Clin Gastroenterol Hepatol* 2016;14:980–5.
- Shahedi K, Fuller G, Bolus R, et al. Long-term risk of acute diverticulitis among patients with incidental diverticulosis found during colonoscopy. *Clin Gastroenterol Hepatol* 2013;11:1609–13.
- Peery AF, Crockett SD, Murphy CC, et al. Burden of gastrointestinal, liver, and pancreatic diseases in the United States: update 2018. *Gastroenterology* 2019;156:254–77.
- Iyer R, Longstreth GF, Chu LH, et al. Acute colonic diverticulitis: diagnostic evidence, demographic and clinical features in three practice settings. *JGLD* 2014;23:379–87.
- O'Connor ES, Levenson G, Kennedy G, Heise CP. The diagnosis of diverticulitis in outpatients: on what evidence? *J Gastrointest Surg* 2010;14:303–8.
- Chaudhary NA, Truelove SC. The irritable colon syndrome. A study of the clinical features, predisposing causes, and prognosis in 130 cases. *Q J Med* 1962;31:307–22.
- Longstreth GF, Iyer RL, Chu LH, et al. Acute diverticulitis: demographic, clinical and laboratory features associated with computed tomography findings in 741 patients. *Aliment Pharmacol Ther* 2012;36:886–94.
- Feuerstein JD, Falchuk KR. Diverticulosis and diverticulitis. *Mayo Clin Proc* 2016;91:1094–104.
- Konvolinka CW. Acute diverticulitis under age forty. *Am J Surg* 1994;167:562–5.
- Young-Fadok BM. Diverticulitis. *N Engl J Med* 2018;379:1635–42.
- Longstreth GF, Tieu RS. Clinically diagnosed acute diverticulitis in outpatients: Misdiagnosis in

- patients with irritable bowel syndrome. *Dig Dis Sci* 2016;61:578–88.
13. Koebnick C, Langer-Gould AM, Gould MK, et al. Sociodemographic characteristics of members of a large, integrated health care system; comparison with US Census Bureau data. *Perm J* 2012;16:37–41.
 14. Longstreth GF, Yao JF. Irritable bowel syndrome and surgery: a multivariable analysis. *Gastroenterology* 2004;126:1665–73.
 15. Kawatkar A, Chu LH, Iyer R, et al. Development and validation of algorithms to identify acute diverticulitis. *Pharmacoepidemiol Drug Saf* 2015;24:27–37.
 16. Jung HK, Choung RS, Locke GR, et al. Diarrhea-predominant irritable bowel syndrome is associated with diverticular disease: a population-based study. *Am J Gastroenterol* 2010;105:652–61.
 17. Järbrink-Sehgal ME, Andreasson A, Talley NJ, Agreus L, Song JY, et al. Symptomatic diverticulosis is characterized by loose stools. *Clin Gastroenterol Hepatol* 2016;14:1763–70.
 18. O'Connor ES, Smith MA, Heise CP. Outpatient diverticulitis: mild or myth? *J Gastrointest Surg* 2012;16:1389–96.
 19. Longstreth GF, Burchette RJ. Family practitioners' attitudes and knowledge about irritable bowel syndrome. Effect of a trial of physician education. *Fam Pract* 2003;20:670–4.
 20. Mujagic Z, Jonkers D, Hungin APS, et al. Use of the Rome criteria for the diagnosis of irritable bowel syndrome in primary care: a survey among European countries. *Eur J Gastroenterol Hepatol* 2017;29:651–6.
 21. Spiegel BMR, Farid M, Esrailian E, Talley J, Chang L, et al. Is irritable bowel syndrome a diagnosis of exclusion? A survey of primary care providers, gastroenterologists, and IBS experts. *Am J Gastroenterol* 2010;105:848–58.
 22. Bharucha AE, Chakraborty S, Sletten CD. Common functional gastroenterological disorders associated with abdominal pain. *Mayo Clin Proc* 2016;91:1118–32.
 23. El Serag HB, Pilgrim P, Schoenfeld P. Systemic review: natural history of irritable bowel syndrome. *Aliment Pharmacol Ther* 2004;19:861–70.
 24. Whitehead WE, Palsson OS, Levy RR, Feld AD, Turner MJ, Von Korff M. Comorbidity in irritable bowel syndrome. *Am J Gastroenterology* 2007;102:2767–76.
 25. Barsky AJ, Borus JF. Functional somatic syndromes. *Ann Intern Med* 1999;130:910–21.
 26. Longstreth GF, Drossman DA. Severe irritable bowel and functional abdominal pain syndromes: managing the patient and health care costs. *Clin Gastroenterol Hepatol* 2005;3:397–400.
 27. Van Oudenhove LV, Levy RL, Crowell MD, et al. Biopsychosocial aspects of functional gastrointestinal disorders: how central and environmental processes contribute to the development and expression of functional gastrointestinal disorders. *Gastroenterology* 2016;150:1355–67.
 28. Strate LL, Peery AF, Neumann I. American Gastroenterological Association Institute technical review on the management of diverticulitis. *Gastroenterology* 2015;149:1950–76.
 29. Dijk ST, Daniels L, Unlu C, et al. Long-term effects of omitting antibiotics in uncomplicated acute diverticulitis. *Am J Gastroenterol* 2018;113:1045–52.
 30. Longstreth GF, Chen Q, Wong C, Yao JF. Increased systemic antibiotic use and *Clostridium difficile* infection among outpatients with irritable bowel syndrome. *Clin Gastroenterol Hepatol* 2018;16:974–6.
 31. Dingle KE, Didelot X, Quan TP, et al. Effects of control interventions on *Clostridium difficile* infection in England: an observational study. *The Lancet Infectious Diseases* 2017;17:411–21.
 32. Palsson OS, Baggish J, Whitehead WE. Episodic nature of symptoms in irritable bowel syndrome. *Am J Gastroenterol* 2014;109:1450–60.

Appendix. Colon radiologic and endoscopic imaging procedures that revealed no diverticulosis in 29 outpatients with irritable bowel syndrome whose presenting symptoms were treated with antibiotics as diverticulitis and not revised to another etiology or excluded by computed tomography. Individual patients are indicted by horizontal lines depicting health plan membership. Lines beginning at the onset of 1998 indicate membership starting then or earlier, and a terminal “x” indicates death. Age is at diagnosis of diverticulitis. F, female; M, Male.

