

## ORIGINAL RESEARCH

# Priorities for Artificial Intelligence Applications in Primary Care: A Canadian Deliberative Dialogue with Patients, Providers, and Health System Leaders

Tara L. Upshaw, MHSc, Amy Craig-Neil, MSc, Jillian Macklin, MSc, Carolyn Steele Gray, MA, PhD, Timothy C. Y. Chan, PhD, Jennifer Gibson, PhD, and Andrew D. Pinto, MD, MSc

**Background:** Artificial intelligence (AI) implementation in primary care is limited. Those set to be most impacted by AI technology in this setting should guide its application. We organized a national deliberative dialogue with primary care stakeholders from across Canada to explore how they thought AI should be applied in primary care.

**Methods:** We conducted 12 virtual deliberative dialogues with participants from 8 Canadian provinces to identify shared priorities for applying AI in primary care. Dialogue data were thematically analyzed using interpretive description approaches.

**Results:** Participants thought that AI should first be applied to documentation, practice operations, and triage tasks, in hopes of improving efficiency while maintaining person-centered delivery, relationships, and access. They viewed complex AI-driven clinical decision support and proactive care tools as impactful but recognized potential risks. Appropriate training and implementation support were the most important external enablers of safe, effective, and patient-centered use of AI in primary care settings.

**Interpretation:** Our findings offer an agenda for the future application of AI in primary care grounded in the shared values of patients and providers. We propose that, from conception, AI developers work with primary care stakeholders as codesign partners, developing tools that respond to shared priorities. (J Am Board Fam Med 2023;36:210–220.)

**Keywords:** Artificial Intelligence, Canada, Family Medicine, Qualitative Research

## Introduction

Artificial intelligence (AI) is a field of computer science concerned with enabling computers to mimic human cognitive functions, such as advanced learning, problem-solving, and creativity.<sup>1</sup> Over the past

decade, advances in methods and computing power have made it possible to organize and interpret large amounts of data and, from that data, reveal patterns that accurately predict complex, nonspecific outcomes and human behaviours.<sup>2–4</sup> This has

This article was externally peer reviewed.

Submitted 6 May 2022; revised 14 October 2022; accepted 5 December 2022.

From the Upstream Lab, MAP/Centre for Urban Health Solutions, Li Ka Shing Knowledge Institute, Unity Health Toronto, Toronto, Ontario, Canada (TLU, CAN, JM, ADP); Cumming School of Medicine, University of Calgary, Calgary, Alberta, Canada (TLU); Undergraduate Medical Education, Faculty of Medicine, University of Toronto, Toronto, Ontario, Canada (TLU, JM); Bridgepoint Collaboratory for Research and Innovation, Lunenfeld-Tanenbaum Research Institute, Sinai Health System, Toronto, Ontario, Canada (CSG); Institute of Health Policy, Management and Evaluation, Dalla Lana School of Public Health, University of Toronto, Toronto, Ontario, Canada (CSG, ADP); Department of Mechanical and Industrial Engineering, Faculty of Applied Science and Engineering, University of Toronto, Toronto,

Ontario, Canada (TCYC); Joint Centre for Bioethics, University of Toronto, Toronto, Ontario, Canada (JG); Dalla Lana School of Public Health, University of Toronto, Toronto, Ontario, Canada (JG); Department of Family and Community Medicine, St. Michael's Hospital, Toronto, Ontario, Canada (ADP); Department of Family and Community Medicine, Faculty of Medicine, University of Toronto, Toronto, Ontario, Canada (ADP).

**Funding:** This project was supported by the Canadian Institutes for Health Research (FRN 156885). Tara Upshaw was supported by a CIHR Frederick Banting and Charles Best Canada Graduate Scholarship. Andrew Pinto is supported as a Clinician-Scientist by the Department of Family and Community Medicine, Faculty of Medicine at the University of Toronto and St. Michael's Hospital, and the Li Ka Shing Knowledge Institute, Unity Health Toronto. He is also supported by a fellowship from the

spurred a flurry of innovation in medicine. Clinical applications of AI are most advanced in image- and signal-intensive disciplines, including radiology, dermatology, and critical care, where the performance of AI algorithms in many tasks now meets or exceeds that of individual clinicians.<sup>5</sup>

Primary care supports the health of all members of society and is primed to realize the benefits of AI on a broad scale. Primary care electronic health records (EHRs) contain longitudinal data that span diseases, care settings, socioeconomic circumstances, and life experiences. Applications of AI to these and other linked data (eg, from wearable devices<sup>6</sup>) can enable proactive care,<sup>7–9</sup> clinical decision support (CDS),<sup>10–12</sup> and triage.<sup>13</sup> Automation of documentation or practice operations tasks could reduce physician burnout and reclaim time spent with patients.<sup>14</sup> With primary care AI in its infancy, these applications are unpotentiated on a broad scale.<sup>15,16</sup>

Examples of primary care-targeted AI applications under development in the public sector include automating checks on clinical decisions in real-time against chronic disease guidelines, detecting signs of dementia, and predicting outcomes such as nonelective hospitalizations.<sup>14,17,18</sup> Some American private health systems and EHRs have deployed proprietary tools for risk stratification and CDS, although the extent to which underlying algorithms have been externally validated, assessed for risk bias, or developed in partnership with end users is unclear.<sup>14</sup> Algorithm bias (i.e., where algorithms developed using nonrepresentative datasets produce outputs biased against structurally vulnerable,<sup>19</sup>) can worsen health equity, as has been demonstrated in some proprietary tools.<sup>20–22</sup>

In 2019, only 1.1% of Canadian physicians in any discipline reported using AI tools in patient care.<sup>23</sup> A 2018 survey of UK general practitioners (GPs) suggests that uptake will be highest for AI tools that support tasks less dependent on empathy and communication, such as documentation.<sup>24,25</sup> The views of primary care patients have not been

explored, although 1 small Canadian study found that public attitudes toward the use of health data for AI research were conditionally positive.<sup>26</sup> Only a handful of educational resources exist to help primary care stakeholders engage in this emerging area.<sup>27,28</sup>

There is opportunity to potentiate the benefit of AI in primary care by engaging key stakeholders in guiding its application. In service of this aim, we asked patients, primary care providers, and health system payers from across Canada about how AI should be applied in primary care and asked them to identify shared priorities.

## Methods

### Setting

This study was conducted in Canada, where more than 85% of citizens over 12 years old have a primary care provider, most often a family physician or a nurse practitioner.<sup>29</sup>

### Participants

We used purposive maximum variation sampling to recruit a socioeconomically diverse group of patients and interprofessional providers from across Canada (see Online Appendix 1 for details of sampling frames).<sup>30</sup> Patients who (1) spoke English, (2) were aged 18 years or older, and (3) visited a primary care provider at least once within the last year were recruited through social media and patient advisory organizations. We aimed to attain sample variation with respect to age, gender, race and ethnicity, educational attainment, income, and province of residence. Providers or managerial office assistants working in a primary care setting at least 1 day per week were recruited through social media and Dr. Andrew Pinto's (AP) professional networks. Variation was sought with respect to gender, race and ethnicity, provider type, country of health professions training, years in practice, practice size, and province of practice. We used a critical case frame for system leaders, inviting individuals in primary care, digital health, or health informatics roles at 5 provincial/territorial governments.<sup>30</sup> We collected demographic information during consent interviews and adjusted recruitment strategies throughout registration to promote variation (see Table 1).

---

Physicians' Services Incorporated Foundation and as the Associate Director for Clinical Research at the University of Toronto Practice-Based Research Network. The opinions, results, and conclusions reported in this article are those of the authors and are independent of any funding sources.

**Conflict of interest:** None to declare.

**Corresponding author:** Andrew D. Pinto, MD, MSc, University of Toronto, Toronto, Ontario, Canada (E-mail: [andrew.pinto@utoronto.ca](mailto:andrew.pinto@utoronto.ca)).

**Table 1. Patient, Provider and Health System Leader Demographics**

	Patients	Providers	Health System Leader
Province n (%)			
British Columbia	1 (4.5%)	1 (4.8%)	1 (20%)
Alberta	4 (18%)	2 (9.5%)	
Saskatchewan	-	-	1 (20%)
Manitoba	-	5 (24%)	
New Brunswick	1 (4.5%)	-	
Nova Scotia	3 (14%)	1 (4.8%)*	
Ontario	12 (55%)	11 (52%)	3 (60%)
Quebec	1 (4.5%)	1 (4.8%)	
Age in years Range, mean (SD)	23 to 73, 40 (16)	28 to 64, 42 (8.7)	
Gender n (%)			
Women <sup>†</sup>	12 (55%)	9 (43%)	
Men	9 (41%)	12 (57%)	
Nonbinary	1 (5%)	-	
Race or ethnicity n (%)			
Black	2 (9%)	1 (4.8%)	
East/Southeast Asian	1 (5%)	2 (9.5%)	
South Asian	6 (27%)	5 (24%)	
White	13 (59%)	10 (48%)	
Mixed	-	3 (14%)	
Self-rated artificial intelligence knowledge <sup>‡</sup>	2.7 (1.1)	3.3 (1.2)	
Mean (SD)			
Provider type n (%)			
Chiropractor	-	1 (4.8%)	-
Clerical staff	-	1 (4.8%)	-
Family physician	-	14 (67%)	-
Family medicine resident	-	2 (9.5%)	-
Nurse practitioner	-	2 (9.5%)	-
Social worker	-	1 (4.8%)	-
Years in practice Mean (SD) <sup>§</sup>	-	12 (10)	-
Practice size <sup>  </sup>			
<250 patients	-	6 (30%)	-
250 to 750 patients	-	6 (30%)	-
>750 to 1250 patients	-	5 (25%)	-
Full-time equivalent clinical hours per week Mean (SD) <sup>¶</sup>	-	0.67 (0.30%)	-

Notes: Due to rounding, some totals may not perfectly sum to 100.

\*Canadian province in which Denmark-licensed family physician studied health information technology in primary care settings.

<sup>†</sup>Including one trans woman.

<sup>‡</sup>Participants rated their knowledge of AI on a 5-point Likert scale (1 was “Not knowledgeable at all,” 5 was “extremely knowledgeable.”)

<sup>§</sup>Calculation includes years in residency.

<sup>||</sup>Excluding residents, clerical participant.

<sup>¶</sup>Calculation excludes clerical participant.

Abbreviation: SD, standard deviation.

## Design

This emergent qualitative study used deliberative dialogue, a participatory method initially developed to enhance deliberative democracy by gathering people affected by an issue to advise decision makers. The method has been adapted for agenda setting in a

variety of contexts, including health system planning.<sup>31–33</sup> In advance of the dialogue, participants are presented with evidence-based information related to the topic and 1 or more questions posed by the dialogue organizers. They are then gathered in 1 or more synchronous meetings to collaboratively ask

questions and deliberate on approaches to address the topic at hand. Rather than draw on specialist knowledge as in Delphi methodologies,<sup>34</sup> dialogue participants are encouraged to base their views and advice in their collective interpretation of the evidence presented, as well as their individual values and lived experiences.<sup>35,36</sup> Consensus may or may not be a prespecified goal of the dialogue.<sup>35,36</sup>

We held 12 videoconference 90-minute dialogues split over 3 rounds between September 8th and October 15th, 2020 (Figure 1). Patients and providers were invited to participate in 1 session in each of the 3 rounds of dialogue. System leaders were invited to join 1 session during the final round or provide feedback on preliminary findings. All participants were offered \$40 Canadian dollars as an honorarium for each session attended.

Dialogue guides (see Online Appendix 1) for rounds 2 and 3 were adapted in response to findings of the previous round. Patients, providers, and health system leaders were asked how they thought AI should be applied in primary care and to work together to develop shared priorities. We sought consensus on priority applications.<sup>35,36</sup> Patients and providers met among their respective peer groups in the first round and in mixed groups during the second round. In the third round, they were joined by system leaders. All participants completed an

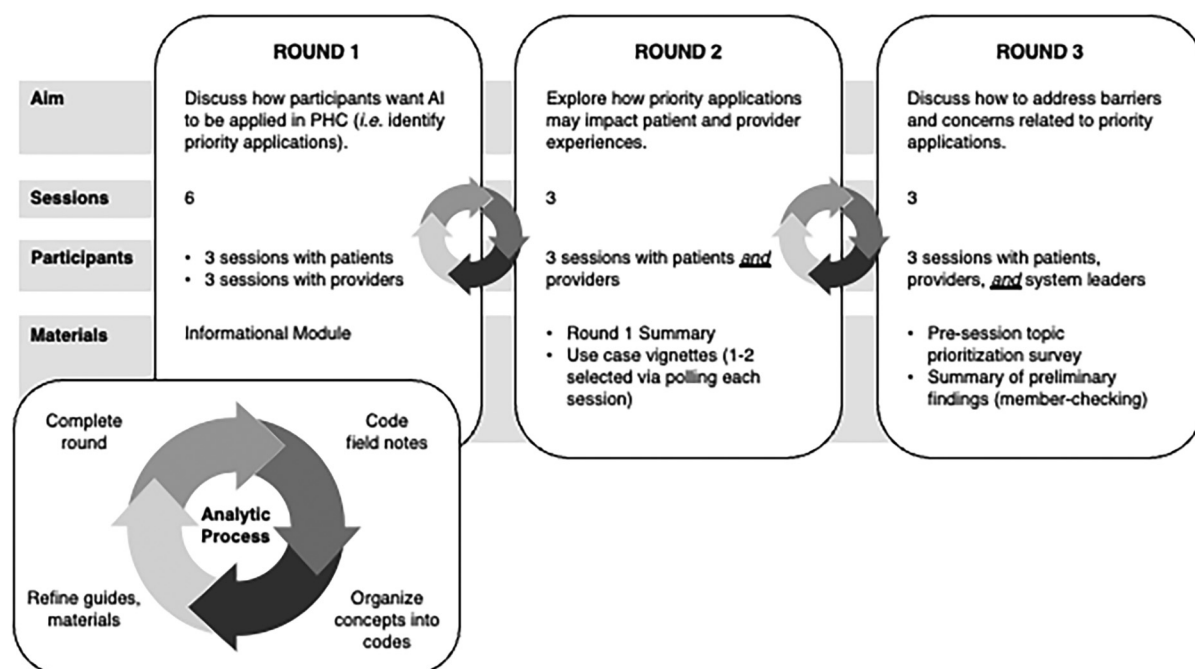
online module written in plain language before participating (see Online Appendix 2). Module content was derived from peer-reviewed literature and included an overview of AI, technical definitions, examples of AI in medicine, potential applications in primary care, and ethical considerations. Before distribution, the module was reviewed by 4 content experts (TCYC, JG, CSG, ADP), 3 members of the public, and a patient partner. The study was approved by the research ethics boards of Unity Health Toronto and the University of Toronto on March 9th, 2020.

### Data Collection and Analysis

We used Sittig and Singh's<sup>37</sup> model for studying health information technology (HIT) in complex adaptive health systems to develop facilitation guides (see Online Appendix 1) and for analysis. We adapted an 8-category framework from EIT Health and McKinsey & Company to conceptually organize AI applications.<sup>38</sup> TLU, a master's student, developed a detailed analysis plan that was reviewed by CSG, who holds a PhD in mixed-methods health technology research. CSG also trained TLU in facilitation techniques.

Each dialogue was recorded and transcribed verbatim, and observers (ACN or JM) recorded field notes in Microsoft Word. ACN is an experienced research coordinator and JM is an MD-PhD student. Both were experienced in qualitative methodologies

**Figure 1. Deliberative dialogue process.** Abbreviations: AI, artificial intelligence; PHC, primary health care.





and were trained by TLU on the specific methods and frameworks used for this study. The facilitator (TLU) met with the observers within 24 hours to rapidly analyze field notes using interpretive description approaches.<sup>39–42</sup> Transcripts and field notes were coded (TLU and ACN) in Microsoft Word, focusing on priority AI applications, concerns, and normative views. Guided by the conceptual model,<sup>37</sup> codes were grouped into concepts and then concepts were grouped into initial themes in Microsoft Excel. Themes identified by analysis of first-round data were member-checked with participants at the beginning of second-round sessions, with particular emphasis placed on clarifying priority applications. Desired functions and benefits of priority applications were based in explicit descriptions offered by participants when justifying their prioritization of a given application. Although thematic saturation—where no new insights arise from subsequently collected data—is not a necessary outcome of deliberative dialogue,<sup>41</sup> we reached it for our key concepts after 9 sessions.<sup>43</sup>

In further support of validity, we achieved data triangulation through careful analysis of transcripts, field notes, interpretive notes, and participant activities (eg, in-session polling).<sup>44</sup> Participants had 3 opportunities to member-check researcher interpretations of priorities and other themes during the study, including a member-checking survey at the study's conclusion, to which 18 participants responded (see Appendix 1).

## Results

Dialogues involved 48 individuals from 8 Canadian provinces, including 22 patients, 21 primary care providers (14 family physicians, 2 family medicine residents, 5 other professionals), and 5 health system leaders (Table 1). Seventy-seven percent of patients and 72% of providers attended at least 2 rounds of dialogues. Of the 53 people registered for the study, 2 providers (scheduling conflicts) and 3 patients (no reasons provided) withdrew without attending sessions. While participants were diverse across most dimensions, 91% of patients had some post-secondary education, and only 1 (4.5%) reported occasional income insecurity. Two patients self-identified as having professional backgrounds in information technology. Another

patient was a heavily involved patient partner. Most physician participants reported an interest in health technology, and several had related professional roles. Five health system leaders participated, including a chief data officer at a hospital and several directors and data scientists from provincial health authorities. Two provided written feedback on preliminary findings only.

We identified 3 themes: (1) priority applications of AI in primary care, (2) impact of AI on primary care provider roles, and (3) considerations for provider training in AI (see Table 2). Shared values included health equity, patient-centered care, patient safety, accessibility, and care continuity. Patients and providers identified strikingly similar priority applications for AI and similar concerns about the impact of AI on care. Health equity, patient safety, and patient-centered care could be both supported and threatened by AI and thus materialized in discussions of priority applications and concerns. Most participants thought that AI should be applied in ways that actively reduce health inequities.

### *Priority Applications of AI in Primary Care*

Patients and providers agreed that the highest priority applications of AI in primary care are to support clinical documentation, practice operations, and triage (see Table 3). The current state of technology in care drives provider burnout, challenges patient-centeredness, or limits access to care. Among other desired benefits, participants hoped that applying AI to these areas would create more time and cognitive freedom for providers to better manage medical or social complexity, coordinate care for patients facing barriers to access, and engage in patient-centered activities (eg, face time with patients). One physician collectively described these benefits as a shift from “full scope to optimum scope.”

Study participants also shared enthusiasm for AI-driven CDS and applications that enabled robust preventative or proactive care. They recognized the “high-reward” potential for such tools to enhance patient safety, outcomes, care quality, and health equity. However, considering unresolved issues of algorithm bias and the current dearth of evidence for AI safety and effectiveness, patients and providers perceived applications in these areas to pose a high immediate risk to patient safety. Weighing this perception with the prospective

**Table 2. Overview of Themes**

Theme 1	Priority applications of AI in primary care
Main idea	Highest priority applications of AI are to areas where the current state of technology drives provider burnout, challenges patient-centeredness, or limits access to care.
Quotes	<p><i>As a patient, I don't want my doctor spending his time facing the computer. I want him facing me. . . So in terms of looking at all of those admin tasks that are taking away from the patient care, I think AI has the potential to free up that time so that I have more face time with my doctor.</i> — 39-year-old patient from British Columbia</p> <p><i>I think that doctors are often overwhelmed and overworked and if AI can be used to help with that, I'm all for that, so that they can be more efficient and more effective in their work.</i> — 34-year-old patient from Alberta</p> <p><i>I was struck by the overlap in interests between providers and patients. . . What stood out was creating more time to be able to focus on actual patient and provider interaction. . . just having more of that time not taken up by all these other nonclinical issues. That. . . could represent a very safe, low-risk place to start and to sort of build upon AI within the primary care setting.</i> — 42-year-old family physician from Manitoba</p> <p><i>My sense is that [triage in primary care] is absolutely abysmal. . . Like, there is no function, currently, of sophisticated pre-visit triage. . . In [my] clinic, people wait 20 minutes and bang up. They don't even call because it's so hard to get in. That's our triage system. If [there was] a way to. . . symptom check or. . . prescreen a little bit, they might be more likely to [come in].</i> — 48-year-old family physician from Ontario</p>
Theme 2	Impact of AI on primary care provider roles
Main idea	AI is not a substitute for provider expertise. It should be applied in ways that supplement core clinical skills and enhance patient-centered care.
Quotes	<p><i>When I'm struggling [to manage my diabetes], sometimes. . . I'm just tired of being a diabetic. It's not because. . . I don't know how to take care of myself. . . It's only when a trust relationship has been built up with the doctor that he can begin to say, "Okay, I know you know how to take care of it. You don't seem to be taking care of it right now. What's going on for you?" I think you have to rely. . . on the trust relationship between the doctor and the patient to recognize specifically what's going on. It may be more subtle than the things that AI might pick up.</i> — 73-year-old patient from Alberta</p> <p><i>In my case, I can tell you for sure that an AI would say, "Oh, she needs this prescription." Meanwhile, that could kill me. . . There are nuances here that I don't think an AI could know. . . And look at it this way: in finance, we have controls in place. . . So, I would want the doctor to review that first. I'm all for them not having to do as much typing. I think it would save time, but there would have to be that review.</i> — 55-year-old patient from Ontario</p> <p><i>Electronic health records have advantages for sure. . . But. . . the one thing I miss so much [is] that I can no longer do a genogram. There's nothing. They were never designed [for EMRs]. So, my family histories are so different than how I was taught with that picture. I did it with patients and we could really understand their family history from so many different angles. I used to love that part of care. . . We just have to be careful [with AI so] that we don't lose. . . strengths of [the] older model.</i> — 57-year-old family physician from Ontario</p> <p><i>How does AI. . . consider the triad of, you know, what is the evidence? What is my experience that I've had after 35 years in practice? And what are the patient preferences? . . . I'm not sure how AI could pick up understanding my clinical experience. I don't know how AI can pick up what a patient's preferences [are] either. So, I think [of AI] as a tool. . . within our evidence-based medicine model.</i> — 64-year-old chiropractor from Ontario</p>
Theme 3	Considerations for provider training in AI
Main idea	Formative and continuing education of primary care and other health professionals should cultivate basic AI literacy, algorithm critical appraisal skills, and safe, effective use within clinical reasoning processes and workflows.
Quotes	<p><i>I would like to trust that my provider has a good perspective in AI so that he doesn't just sort of follow it slavishly but considers it as part of his care for me.</i> — 73-year-old patient from Alberta</p> <p><i>I don't mean to sound like an alarmist about the dependency part. I'm not being reactionary. It's just, I have concerns about that. So, I wonder how [the use of AI] would be monitored, how doctors would be trained, how we would ensure that patients are getting still this benefit of experience and knowledge and not just this dependency.</i> — 55-year-old patient from Ontario</p> <p><i>I have a 15-year-old who's learning how to drive. We have one car that has sensors and all sorts of safety features, and another car that doesn't. . . I feel like he needs to understand how to operate a vehicle at its base level before he can really make use of [safety features]. . . Maybe we need to emphasize the diagnostic reasoning, the history and physical pieces and the test ordering first, and introduce AI to that senior clinical learner. . . rather than right off the bat, so that they've got those building blocks behind them.</i> — 44-year-old family physician from Alberta</p> <p><i>I think that part of what can help physicians [manage] our medical legal liability and risk is education and training around what these technologies are and what their purpose is. . . It's going to take a lot of awareness building among physicians to stay on top of how we can practice safely with the best interests of our patients in mind as these technologies become more widespread.</i> — 42-year-old family physician from Manitoba</p>

Abbreviation: AI, artificial intelligence.

**Table 3. Desired Functions and Benefits of Priority Applications of Artificial Intelligence in Primary Care**

Application Area	Desired Functions	Desired Benefits
<b>Higher priority</b>		
Documentation	<ul style="list-style-type: none"> <li>• Automate charting</li> <li>• Manage prescriptions (generation, refilling, forwarding)</li> <li>• Manage referrals</li> </ul>	<ul style="list-style-type: none"> <li>• Mitigate provider burnout</li> <li>• Liberate time and cognitive freedom for:               <ul style="list-style-type: none"> <li>◦ Direct, face-to-face patient interaction</li> <li>◦ Discussions during a visit for patient goals, preferences, and circumstances</li> <li>◦ Managing medical and social complexity</li> <li>◦ Coordinating access to care for patients who face high barriers</li> </ul> </li> </ul>
Practice operations	<ul style="list-style-type: none"> <li>• Collect and verify patient information</li> <li>• Optimize staff and learner scheduling<sup>†</sup></li> <li>• Predict surges in visits to direct resource planning<sup>†,§</sup></li> </ul>	
Triage	<ul style="list-style-type: none"> <li>• Set an agenda before a visit by distilling patient concerns and taking partial histories</li> <li>• Assign concerns to management by virtual or in-person care modalities</li> <li>• Consider quality of life and functional impacts in determination of acuity*</li> <li>• Help patients decide if they can safely self-manage a concern, and if not, what health services they require</li> </ul>	<ul style="list-style-type: none"> <li>• Prioritized access to synchronous modality of care delivery for those at risk of decompensation, medical need</li> <li>• Greater convenience for patients who receive virtual care, especially those with mobility challenges or living rurally*</li> <li>• Optimized provision of and access to care across delivery modalities</li> <li>• Decreased wait times*</li> </ul>
<b>Lower priority</b>		
Clinical decision support	<ul style="list-style-type: none"> <li>• Synthesize administrative, clinical (eg, patient history, past treatments), biometric data, and other “sources of truth” (eg, evidence, guidelines) to guide diagnosis, treatment, and care planning of rare diseases <i>and</i> common conditions<sup>†</sup></li> <li>• Present guidance in real-time during a consult<sup>†,§</sup></li> <li>• Assist with management of medical complexity</li> </ul>	<ul style="list-style-type: none"> <li>• Provide a “second opinion”; help providers “think outside the box”; transfer specialist knowledge into primary care</li> <li>• Improve speed and accuracy of diagnosis</li> <li>• Reduce trial-and-error treatments, uninformative or burdensome diagnostic tests, and multiple specialist referrals</li> <li>• Reduce rates of medical error</li> </ul>
Proactive and preventative care	<ul style="list-style-type: none"> <li>• Identify patients who are at high risk of decompensation or loss to follow-up, particularly those who experience structural vulnerability<sup>†,§</sup></li> <li>• Recall patients with abnormal test results or those due for routine screening<sup>†,§</sup></li> <li>• Automate early referral to interprofessional care<sup>†</sup></li> </ul>	<ul style="list-style-type: none"> <li>• Optimize contact with the provider to improve               <ul style="list-style-type: none"> <li>◦ Care access</li> <li>◦ Health equity</li> <li>◦ Patient safety</li> <li>◦ Team-based care<sup>†</sup></li> </ul> </li> </ul>

Notes: Views held exclusively by one participant group are indicated by the symbols below. The absence of a symbol reflects a view shared by patients and providers.

\*Patient only view.

<sup>†</sup>Provider only view.

<sup>§</sup>System leader support.

utility of all possible applications, participants assigned higher priority to “safer” areas that would address patients’ and providers’ most pressing unmet needs. One physician and all 3 system leaders who participated in dialogues were interested in applying AI to population-level datasets for discovery and health resource planning.

Participants believed that software interoperability, usability, and workflow integration must be addressed to fully realize the impact of AI in primary care. Patients and providers worried that triage tools, if designed and implemented without input from key stakeholders, could disrupt continuity or limit access to those unable to use technology (eg, people without computer access, some older

people). Providers acknowledged that proactive and preventative care applications must be supported by workflow reconfigurations, appropriate compensatory models, and the development of evidence-based proactive interventions. Several patients and providers were interested in remote monitoring and self-management applications (Table 3). However, they were not shared priorities, given substantial concerns about overloading end users with unhelpful or unactionable information.

### **Impact of AI on Primary Care Provider Roles**

While they were open to the potential for AI to alleviate the burdens of certain routine tasks, most patients and providers were unconvinced that AI

will ever fully replace providers, especially in the context of clinical decision-making. This skepticism arose from the idea that the patient-provider relationship is intrinsically human and at once the defining feature and enabling mechanism of patient-centered primary care. This belief was widely held among participants. Several participants were particularly pessimistic that AI tools could fairly or comprehensively consider social and economic factors that impact care, believing this knowledge to develop through strong relationships built with individuals and communities over time. For these reasons, patients and providers agreed that the design, implementation, and use of AI should uphold or enhance the patient-provider relationship.

### ***Considerations for Provider Training in AI***

Several patients and most providers worried that future provider generations could fall victim to deskilling (ie, declining proficiency over time resulting from automation of tasks) if either the design of AI applications or AI training for health professionals does not preserve the core skills that promote patient safety or patient-centredness. They were worried that this scenario could lead providers to rely on algorithm outputs more than their clinical reasoning skills or knowledge about a patient's unique history, circumstances, goals, and preferences. Several providers speculated that such overreliance could compromise patient safety should AI malfunction, be biased, or be unavailable in certain settings.

Participants agreed that training must prepare providers to use AI safely and effectively while retaining core clinical skills. Providers and system leaders identified 3 priority areas for formative and continuing professional education: basic AI literacy, algorithm critical appraisal, and workflow integration. They suggested that curricula cultivate AI literacy and algorithm appraisal skills early in training. Further, trainees should receive hands-on exposure to AI tools only after demonstrating clinical competence in the relevant knowledge domain to prevent deskilling.

Physicians and 1 system leader thought that training for practicing professionals should be online and largely self-directed. Further, they believed that content should be responsive to the needs determined by different practice settings (eg, remote, urban) and care models (eg, walk-in, family

health team). Some physicians and a system leader viewed training on specific AI software and integration within clinic workflows as important for preventing the burnout experienced during the rollout of EHRs. Several physicians and 1 nurse practitioner stressed the need to clarify medicolegal liability for AI-enabled decisions and update risk management guidance accordingly. One system leader suggested that training would also help “demystify” AI technology, promoting adoption and enabling fulsome provider participation in its design, implementation, and regulation.

### **Discussion**

This study is the first to engage a national group of health care stakeholders in dialogue about the role of AI in shaping the future of any medical discipline and the first to substantively describe primary care patient views about AI. Patients and providers thought that AI should be first applied to support clinical documentation, practice operations, and triage, which would improve efficiency while maintaining person-patient-centered care. They viewed complex AI-driven CDS and proactive care tools as impactful but lower priorities because AI applied in these areas posed a higher perceived risk to patient safety, given present technical and external limitations. Training in AI was viewed as the most important external enabler of the safe, effective, and patient-centered use of AI in primary care settings.

While the applications that our participants prioritized align in general with previous research,<sup>14,15,45</sup> our study offers a distinction between higher- and lower-priority applications from the perspectives of end users. Notably, the highest-priority areas identified in our study are not reflected in existing AI research. A scoping review found that, as of 2018, the field focused heavily on methods development for diagnostic and treatment CDS. Our findings suggest that AI researchers should focus on the practical day-to-day challenges patients and providers face.

Participants' priorities were influenced by how they understood the intersections of patient and provider roles, workflow and communication requirements, and external forces (eg, medical education, limited evidence of AI safety). As anticipated by the Sittig and Singh framework, the successful deployment of AI will depend on the interaction of multiple social and technical factors. To anticipate these factors, developers and software designers



should engage patients and providers as codesign partners at a project's conception phase.<sup>46,47</sup> Development teams should be interdisciplinary from the outset, including health information and implementation specialists, whose expertise will facilitate the translation of AI algorithms into routine clinical practice.

Compared with Blease et al's<sup>24,25</sup> 2018 survey of UK GP attitudes toward AI tools, our participants were more open to AI as a supplement to clinical reasoning. However, they shared the view that AI technology is unlikely to obviate the provider role. Notably, patients and providers in our study took a strong normative stance that AI is not an adequate substitute for providers for any clinical function that leverages knowledge gained through the patient-provider relationship, nor tasks that rely heavily on empathy and communication, skills they considered innately human.

Content about data science, AI, electronic medical records, and other HIT in medical education curricula is limited.<sup>48,49</sup> Our findings give credence to the gaps identified by other commentators and recent surveys of medical students.<sup>50–53</sup> This study offers concrete suggestions for the timing, focus, and delivery of training in AI. This presents another opportunity for cocreation between developers, clinicians, patients, and educators.

This study has several strengths. First, findings are based in values considered fundamental to the discipline of primary care,<sup>54</sup> which supports transferability of our findings to non-Canadian settings. Second, deliberative dialogue created a novel opportunity for patients and interprofessional providers to engage with one another and agree upon common perspectives. Finally, unlike previous work,<sup>24–26</sup> study participants learned about AI technology before taking part, promoting an informed discussion.

This work also has limitations. Patients had higher educational attainment and lower levels of income insecurity than observed in the general population of Canada and other Organisation for Economic Co-operation and Development countries.<sup>55,56</sup> In addition, our sample did not include any self-identifying indigenous people, who may have unique views on health data use.<sup>57</sup> Physician views were likely biased toward those who are already interested in AI technology. We were also unable to engage participants from the northern

territories or the other Atlantic provinces, regions that face unique resource constraints. For these reasons, we cannot assume our findings are generalizable. Many participants felt additional dialogues were needed to thoroughly explore the study topic, which encouragingly suggests an appetite for more deliberative work that robustly engages other stakeholders and broader publics.

Our findings offer an agenda for applying AI in primary care grounded in the shared values of patients and providers. We propose a paradigm shift, where from the conception phase, AI developers work with interdisciplinary teams that engage primary care end users as codesign partners, developing AI-driven tools that respond to patients' and providers' most pressing unmet needs.

---

We are grateful to the study participants who made this research possible by sharing their time and rich perspectives. We thank Millie Upshaw, Sally Headrick, Monica Brands, and Jane Cooney for reviewing the online informational module used to support participants.

To see this article online, please go to: <http://jabfm.org/content/36/2/210.full>.

## References

1. Buchanan BG. A (very) brief history of artificial intelligence. *AI Mag* 2005;26:53.
2. Hinton G. Deep learning—a technology with the potential to transform health care. *JAMA* 2018;320:1101–2.
3. Naylor CD. On the prospects for a (deep) learning health care system. *JAMA* 2018;320:1099–100.
4. Lecun Y, Bengio Y, Hinton G. Deep learning. *Nature* 2015;521:436–44.
5. Topol EJ. High-performance medicine: the convergence of human and artificial intelligence. *Nat Med* 2019;25:44–56.
6. Wicklund E [Internet]. Apple unveils mHealth integration with EMR data through health app. *mHealth Intelligence*; 2018 [cited 2021 Apr 21]. Available from: <https://mhealthintelligence.com/news/apple-unveils-mhealth-integration-with-emr-data-through-health-app>.
7. Miotto R, Li L, Kidd BA, Dudley JT. Deep patient: an unsupervised representation to predict the future of patients from the electronic health records. *Sci Rep* 2016;6:1–10.
8. Razavian N, Marcus J, Sontag D [Internet]. Multi-task prediction of disease onsets from longitudinal lab tests; 2016 [Accessed 2021 Apr 21]. Available from: <https://arxiv.org/abs/1608.00647>.
9. Shameer K, Johnson KW, Yahi A, et al. Predictive modeling of hospital readmission rates using

- electronic medical record-wide machine learning: a case-study using Mount Sinai heart failure cohort. In: Pacific Symposium on Biocomputing. World Scientific Publishing Co.; 2017. p. 276–87.
10. Abràmoff MD, Lavin PT, Birch M, Shah N, Folk JC. Pivotal trial of an autonomous AI-based diagnostic system for detection of diabetic retinopathy in primary care offices. *NPJ Digit Med* 2018;1:39
  11. Yang Z, Huang Y, Jiang Y, Sun Y, Zhang YJ, Luo P. Clinical assistant diagnosis for electronic medical record based on convolutional neural network. *Sci Rep* 2018;8:6329.
  12. Chekroud AM, Zotti RJ, Shehzad Z, et al. Cross-trial prediction of treatment outcome in depression: a machine learning approach. *Lancet Psychiatry* 2016;3:243–50.
  13. Razzaki S, Baker A, Perov Y, et al [Internet]. A comparative study of artificial intelligence and human doctors for the purpose of triage and diagnosis; 2018. Available from: <https://arxiv.org/abs/1806.10698>.
  14. Lin SY, Mahoney MR, Sinsky CA. Ten ways artificial intelligence will transform primary care. *J Gen Intern Med* 2019;34:1626–30.
  15. Liaw W, Kakadiaris IA. Artificial intelligence and family medicine: better together. *Fam Med* 2020; 52:8–10.
  16. Kueper JK, Terry AL, Zwarenstein M, Lizotte DJ. Artificial intelligence and primary care research: a scoping review. *Ann Fam Med* 2020;18:250–8.
  17. Manning CL. Artificial intelligence could bring relevant guidelines into every consultation. *BMJ* 2019;366:14788.
  18. Rahimian F, Salimi-Khorshidi G, Payberah AH, et al. Predicting the risk of emergency admission with machine learning: development and validation using linked electronic health records. *PLoS Med* 2018;15:e1002695.
  19. Panch T, Mattie H, Atun R. Artificial intelligence and algorithmic bias: implications for health systems. *J Glob Health* 2019;9:1–5.
  20. Obermeyer Z, Powers B, Vogeli C, Mullainathan S. Dissecting racial bias in an algorithm used to manage the health of populations. *Science* 2019;366: 447–53.
  21. Gianfrancesco MA, Tamang S, Yazdany J, Schmajuk G. Potential biases in machine learning algorithms using electronic health record data. *JAMA Intern Med* 2018;178:1544–7.
  22. Larrazabal AJ, Nieto N, Peterson V, Milone DH, Ferrante E. Gender imbalance in medical imaging datasets produces biased classifiers for computer-aided diagnosis. *Proc Natl Acad Sci U S A* 2020; 117:12592–4.
  23. Canadian Medical Association [Internet]. CMA workforce survey 2019: electronic records and tools; 2019. Available from: <https://surveys.cma.ca/en/>
  - list?p=1&ps=20&sort=title\_sort asc&topic\_facet=Electronic records and tools&year\_facet=2019.
  24. Blease C, Kaptchuk TJ, Bernstein MH, Mandl KD, Halamka JD, DesRoches CM. Artificial intelligence and the future of primary care: exploratory qualitative study of UK general practitioners' views. *J Med Internet Res* 2019;21:e12802.
  25. Blease C, Bernstein MH, Gaab J, et al. Computerization and the future of primary care: a survey of general practitioners in the UK. *PLoS One* 2018;13: e0207418.
  26. McCradden MD, Sarker T, Paprica PA. Conditionally positive: a qualitative study of public perceptions about using health data for artificial intelligence research. *BMJ Open* 2020;10:e039798.
  27. Kueper JK. Primer for artificial intelligence in primary care. *Can Fam Physician* 2021;67:889–93.
  28. Adus S, Upshaw TL, Macklin J [Internet]. Artificial intelligence education module; 2022 [Accessed 2022 Oct 14]. Available from: [https://rise.articulate.com/share/UGv3PYcYhmIPVr8swxGifz0TqFDREySF?fbclid=IwAR1RMIBz5sNL4U1rHnJznPXMQwRj7FM7dy1iKfoK0y37hA2B58GIPx69c#](https://rise.articulate.com/share/UGv3PYcYhmIPVr8swxGifz0TqFDREySF?fbclid=IwAR1RMIBz5sNL4U1rHnJznPXMQwRj7FM7dy1iKfoK0y37hA2B58GIPx69c#/).
  29. Statistics Canada [Internet]. Primary health care providers, 2019; 2020 [Accessed 2021 Apr 4]. Available from: <https://www150.statcan.gc.ca/n1/pub/82-625-x/2020001/article/00004-eng.htm>.
  30. Patton M. Purposeful sampling. In: Loughton C, Axelsen D, Peterson K, editors. *Qualitative research & evaluation methods*. 3rd ed. Sage Publications Ltd; 2001. p. 230–42.
  31. McCoy ML, Scully PL. Deliberative dialogue to expand civic engagement: what kind of talk does democracy need? *Nat Civic Rev* 2002;91:117–35.
  32. Mulvale G, Chodos H, Bartram M, MacKinnon MP, Abud M. Engaging civil society through deliberative dialogue to create the first mental health strategy for Canada: changing directions, changing lives. *Soc Sci Med* 2014;123:262–8.
  33. Ridde V, Dagenais C. What we have learnt (so far) about deliberative dialogue for evidence-based policymaking in West Africa. *BMJ Glob Health* 2017;2: e000432.
  34. Trevelyan EG, Robinson PN. Delphi methodology in health research: how to do it? *Eur J Integr Med* 2015;7:423–8.
  35. Lavis JN, Boyko J, Oxman AD, Lewin S, Fretheim A. SUPPORT tools for evidence-informed health policymaking (STP) 14: organising and using policy dialogues to support evidence-informed policymaking. *Health Res Policy Sys* 2009;16:S14.
  36. Boyko JA, Lavis JN, Abelson J, Dobbins M, Carter N. Deliberative dialogues as a mechanism for knowledge translation and exchange in health systems decision-making. *Soc Sci Med* 2012;75:1938–45.
  37. Sittig DF, Singh H. A new sociotechnical model for studying health information technology in complex

- adaptive healthcare systems. *Qual Saf Heal Care* 2010;19:i68-i74.
38. García JF, Hieronimus S, Spatharou A, Beck JP, Jenkins J [Internet]. Transforming healthcare with AI: the impact on the workforce; 2020. Available from: <https://www.mckinsey.com/industries/healthcare/our-insights/transforming-healthcare-with-ai>.
39. Thorne S, Kirkham SR, MacDonald-Emes J. Interpretive description: a noncategorical qualitative alternative for developing nursing knowledge. *Res Nurs Health* 1997;20:169-77.
40. Thorne S, Kirkham SR, O'Flynn-Magee K. The analytic challenge in interpretive description. *Int J Qual Methods* 2004;3:1-11.
41. Plamondon KM, Bottorff JL, Cole DC. Analyzing data generated through deliberative dialogue. *Qual Health Res* 2015;25:1529-39.
42. Sangaramoorthy T, Kroeger KA. Rapid ethnographic assessments: a practical approach and toolkit for collaborative community research. Routledge; 2020.
43. Fusch PI, Ness LR [Internet]. Are we there yet? Data saturation in qualitative research; 2015. Available from: <https://nsuworks.nova.edu/tqr/vol20/iss9/3/>.
44. Whittemore R, Chase SK, Mandle CL. Validity in qualitative research. *Qual Health Res* 2001;11:522-37.
45. Liyanage H, Liaw S-T, Jonnagaddala J, et al. Artificial intelligence in primary health care: perceptions, issues, and challenges. *Yearb Med Inform* 2019;28:41-6.
46. McCurdie T, Taneva S, Casselman M, et al. mHealth consumer apps: the case for user-centered design. *Biomed Instrum Technol* 2012;Suppl:49-56.
47. Sanders EBN, Stappers PJ. Co-creation and the new landscapes of design. *CoDesign* 2008;4:5-18.
48. Oh S, Kim JH, Choi SW, Lee HJ, Hong J, Kwon SH. Physician confidence in artificial intelligence: an online mobile survey. *J Med Internet Res* 2019;21:e12422.
49. Giunti G, Guisado-Fernandez E, Belani H, Lacalle-Remigio JR. Mapping the access of future doctors to health information technologies training in the European Union: cross-sectional descriptive study. *J Med Internet Res* 2019;21:e14086.
50. Paranjape K, Schinkel M, Panday RN, Car J, Nanayakkara P. Introducing artificial intelligence training in medical education. *JMIR Med Educ* 2019;5:e16048.
51. Kolachalama VB, Garg PS. Machine learning and medical education. *NPJ Digit Med* 2018;1:1-3.
52. Rampton V, Mittelman M, Goldhahn J. Implications of artificial intelligence for medical education. *Lancet Digit Health* 2020;2:e111-e112.
53. Harish V, Aissiou A, Macmillan K, Mcleod G, Ngo R, Yau O et al [Internet]. Preparing medical students for the impact of artificial intelligence on healthcare introduction; 2019. Available from: [https://www.cfms.org/files/meetings/agm-2020/resolutions/ai\\_healthcare/PreparingMedStudentsForAI.pdf](https://www.cfms.org/files/meetings/agm-2020/resolutions/ai_healthcare/PreparingMedStudentsForAI.pdf).
54. Task Force 1. Report of the Task Force on Patient Expectations: core values, reintegration, and the new model of family medicine. *Ann Fam Med* 2004;2:S33-S50.
55. OECD [Internet]. Adult education level (indicator); 2023. Available from: [https://www.oecd-ilibrary.org/education/adult-education-level/indicator/english\\_36bce3fe-en](https://www.oecd-ilibrary.org/education/adult-education-level/indicator/english_36bce3fe-en).
56. OECD [Internet]. Poverty rate (indicator); 2023. Available from: [https://www.oecd-ilibrary.org/social-issues-migration-health/poverty-rate/indicator/english\\_0fe1315d-en](https://www.oecd-ilibrary.org/social-issues-migration-health/poverty-rate/indicator/english_0fe1315d-en).
57. Walter M, Lovett R, Maher B, et al. Indigenous data sovereignty in the era of Big Data and Open Data. *Aust J Soc Issues* 2021;56:143-56.

## Appendix 1. Deliberative Dialogue Process and Guides

- Appendix 1 Table 1. Participant Sampling Frames and Recruitment Strategies
- Round 1 Patient Dialogue Guide
- Round 1 Provider Dialogue Guide
- Round 2 Dialogue Guide with Use Cases
- Round 3 Topic Prioritization Survey and Dialogue Guide
- Member-Checking Survey
- Appendix 1 Table 2. Patient, Provider, and Health System Leader Demographics

### Round 1 Patient Dialogue Guide

#### *Opening and Presession Questionnaire Responses (10 m)*

- Review study aim and guidelines for respectful dialogue.
- Before we begin the structured portion of the dialogue, we want to make sure that everyone is on the same page in terms of the topics discussed in

the module. There were a few questions that came up in the questionnaire at the end of the informational module. I've addressed these in the slides.

- Are there any other questions?

- Here are some of the things some of you found interesting or important after reading the module. We can speak to these ideas throughout the discussion, and I will do my best to bring them up while facilitating.

#### *Deliberative Dialogue (1 hours 15 m)*

##### *Uses and Applications*

1. Considering what you learned from the module and your own experiences as patients, what **areas of primary health care** do we think can be improved with AI-based tools?
  - Are there any areas of primary health care where we think the use of AI-based tools is **not** a good idea?
2. As described in the module, developing AI applications for use in primary care depend on availability of personal health information, like the clinical data stored in electronic medical records or administrative datasets that track your use of the health system.

**Appendix 1 Table 1. Participant Sampling Frames and Recruitment Strategies**

Participant Group	Sampling Frame	Eligibility Criteria	Recruitment
PHC patients	Purposive maximum variation (age, gender, race and ethnicity, education level, income, province of residence)	<ul style="list-style-type: none"> <li>• English-speaking</li> <li>• Aged 18 or older</li> <li>• Visited PHC provider at least once in last year (virtual or in-person)</li> </ul>	<ul style="list-style-type: none"> <li>• Online advertisements (Kijiji, social media channels) in 10 provinces</li> <li>• Patient advisor distribution list*</li> </ul>
PHC providers	Purposive maximum variation (gender, race and ethnicity, provider type, country of health professions education, years in practice, practice size, and province of practice)	<ul style="list-style-type: none"> <li>• Any provider or administrative support person working in a PHC setting</li> <li>• Worked at least one clinical day per week</li> </ul>	<ul style="list-style-type: none"> <li>• Emailed invitation from Dr. Andrew Pinto (AP) to PHC colleagues interested in digital health or health informatics</li> <li>• Emailed invitation from AP to practice colleagues<sup>†</sup></li> <li>• Online advertisements (social media channels, PHC research network news channels)</li> </ul>
System leaders	Critical case	Involved in digital health, health informatics, or PHC governance	Emailed invitation from AP send to individuals within study team members' professional networks and those in relevant roles listed on health ministry public directories in 5 provinces <sup>‡</sup>

\*Patient advisory network in British Columbia, patient-family advisory council of downtown Toronto hospital.

<sup>†</sup>Downtown Toronto academic family health team.

<sup>‡</sup>British Columbia, Alberta, Saskatchewan, Manitoba, Ontario.

Abbreviation: PHC, primary health care.



**Appendix 1 Table 2. Patient, Provider, and Health System Leader Demographics**

	Patients	Providers	Health System Leader
Province			
British Columbia	1 (4.5%)	1 (4.8%)	1 (20%)
Alberta	4 (18%)	2 (9.5%)	
Saskatchewan	-	-	1 (20%)
Manitoba	-	5 (24%)	
New Brunswick	1 (4.5%)	-	
Nova Scotia	3 (14%)	1 (4.8%)*	
Ontario	12 (55%)	11 (52%)	3 (60%)
Quebec	1 (4.5%)	1 (4.8%)	
Age in years Range, mean (SD)	23 to 73, 40 (16%)	28 to 64, 42 (8.7%)	
Gender n (%)			
Female <sup>†</sup>	12 (55%)	9 (43%)	
Male	9 (41%)	12 (57%)	
Nonbinary	1 (5%)	-	
Race or ethnicity n (%)			
Black	2 (9%)	1 (4.8%)	
East/Southeast Asian	1 (5%)	2 (9.5%)	
South Asian	6 (27%)	5 (24%)	
White	13 (59%)	10 (48%)	
Mixed	-	3 (14%)	
Self-rated artificial intelligence knowledge <sup>‡</sup> Mean (SD)	2.7 (1.1)	3.3 (1.2)	
Provider type			
Chiropractor	-	1 (4.8%)	-
Clerical staff	-	1 (4.8%)	-
Family physician	-	14 (67%)	-
Family medicine resident	-	2 (9.5%)	-
Nurse practitioner	-	2 (9.5%)	-
Social worker	-	1 (4.8%)	-
Years in practice Mean (SD) <sup>§</sup>	-	12 (10)	-
Practice size <sup>  </sup>			
<250 patients	-	6 (30%)	-
250 to 750 patients	-	6 (30%)	-
750 to 1250 patients	-	5 (25%)	-
Full-time equivalent clinical hours per week Mean (SD) <sup>¶</sup>	-	0.67 (0.30%)	-

Notes: Due to rounding, some totals may not perfectly sum to 100.

\*Canadian province in which Denmark-licensed family physician studied health information technology in primary care settings.

<sup>†</sup>Including one trans woman.

<sup>‡</sup>Participants rated their knowledge of AI on 5 five-point Likert scale (1 was “Not knowledgeable at all,” 5 was “extremely knowledgeable.”

<sup>§</sup>Calculation includes years in residency.

<sup>||</sup>Excluding residents, clerical participant.

<sup>¶</sup>Calculation excludes clerical participant.

Abbreviation: SD, standard deviation.

- How do you feel about the use of your personal health information to train AI tools that inform the care of others?
  - What would it take to make you feel comfortable that your personal health information is truly deidentified and couldn't be linked back to you?
3. AI can be applied to health care datasets to predict more concrete things like the chance that a strange mole is skin cancer, or more

abstract things like how likely someone is to be admitted to hospital in the next three months. The steps a provider can take for a skin cancer diagnosis are clear, but there isn't one intervention to prevent something like a hospital admission or death, because these events are complex.

- What kinds of expectations should we have about the steps a provider takes in response to a prediction or recommendation made by an

AI-based prediction tool? Does it depend on the prediction?

- How important is it for providers to be able to identify the factors that contribute to a prediction or recommendation made by an AI-based tool? Does it depend on the prediction?
4. We explored in the module an example of the negative impacts of a biased AI algorithm. **Biased algorithms** may result from poor quality datasets that reflect biases in our society or from the biased assumptions of people who develop AI applications. If an AI-based tool were used in your care, how important would it be for you **to know the steps that were taken to ensure that its predictions were not biased against you?**
- How and when would you like those steps communicated to you?

### ***Concluding Remarks and Participant Experience Survey (5 m)***

## **Round 1**

### **Provider Dialogue Guide**

#### ***Opening and Presession Questionnaire Responses (10 m)***

- Review study aim and guidelines for respectful dialogue.
  - Before we begin the structured portion of the dialogue, we want to make sure that everyone is on the same page in terms of the topics discussed in the module. There were a few questions that came up in the questionnaire at the end of the informational module. I've addressed these in the slides.
- Are there any other questions?

#### ***Deliberative Dialogue (1 hours 15 m)***

##### ***Uses and Applications***

1. Considering what you learned from the module and your own clinical experience, what tasks or processes in primary health care practice do you think can be improved with AI-based tools?
2. Are there any areas of primary health care where we think the use of AI-based tools is **not** a good idea?
3. How would your workflows have to change to allow the effective use of a given AI tool?
  - What changes in communication would you expect patients would need or want, if you started using these tools? Should they know you're using AI?

4. Are there populations in your practice that you could better support with accurate predictions for certain outcomes?
5. What are your thoughts on predicting clinical outcomes (eg, 10-year mortality) versus patient-important outcomes?

#### ***Accuracy, Transparency, and Fairness***

1. What evidence would you need to feel confident using an AI prediction tool to support clinical decision-making?
  - a. Is evidence less important for tools that support administrative tasks?
  - b. Would you want to double-check a flag before an AI assistant contacts a patient to schedule an appointment?
2. How important would it be for you to fully understand the factors an AI algorithm considers in generating a prediction?
3. How important would it be for you to know the steps that were taken to ensure that the predictions of an AI algorithm were not biased against your clinic population?
4. What safeguards need to be in place to ensure a tool doesn't make health inequity worse?

#### ***System, Organizational, and Provider Readiness for AI***

1. How prepared do you feel you to use an AI tool and its predictions in your practice, today? What supports do you need to address gaps in your knowledge?
2. How ready do you feel your clinic is to implement AI tools? What about your institution? Your health system?
3. What barriers do you anticipate to making use of the outputs of AI prediction tools in your routine workflow?

### ***Concluding Remarks and Participant Experience Survey (5 m)***

## **Round 2**

### **Dialogue Guide with Use Cases**

#### ***Opening and Round 1 Summary Review (20 m)***

- Review study aim and guidelines for respectful dialogue.
- Review summary of preliminary Round 1 findings, including patient and provider use cases of interest and concerns.

#### ***Deliberative Dialog***

##### ***Part 1 (20 m)***

- Let's take some time to respond to the ideas participants shared in Round 1. What comes up for

members of the group when reflecting on the summary?

### *Part 2 (40 m)*

- Let's dig into a few example applications of AI in primary care. Our study team developed the following use cases based on the areas of application that participants in the first round of dialogues were interested in. They have been written in a way to provoke dialogue. We'll vote on the use cases using the polling link posted in the chat:
- Questions for use cases:
  - How would you want this tool to work for you?
  - What challenges do you anticipate might get in the way of this tool working optimally?
- Use cases:
  1. A large primary care organization that serves 36,000 people is using a new AI tool. It processes the usual health data found in EMRs and combines it with social data that the organization has collected on patients, like their housing, income and employment status, and their language preference. Clinic leadership has asked physicians to spend dedicated time each shift focusing on their top 10 patients who are at risk of getting sick.
  2. An EMR vendor has developed a new AI-enabled tool. The vendor claims the tool can optimize patient appointment booking to help get those most in need seen first by their provider. The tool has a smartphone app that patients can use to book appointments and describe the reasons for the visit. The vendor offers clinics that use their EMR system free use of the tool for one year.
  3. A primary care provider is testing a new AI tool in her clinic. The tool uses *natural language processing* and other AI methods to automatically create notes in the patient chart during a clinic visit. A microphone connected to the computer sits on the desk in consult room. A patient who has never heard of this kind of tool enters the room for an appointment.
  4. AI researchers at an American university developed an AI tool that uses deep learning to help primary care providers and patients manage chronic conditions. The tool analyzes data entered by patients in an app; it can also integrate with certain smart watch models. It sends alerts to providers when it detects something unusual. The researchers started a company to

sell this tool and have approached several Canadian primary care clinics.

5. An EMR vendor has developed a new AI-enabled tool. The vendor claims the tool can optimize patient appointment booking to help get those most in need seen first by their provider. The tool has a smartphone app that patients can use to book appointments and describe the reasons for the visit. The vendor offers clinics that use their EMR system free use of the tool for one year.

### ***Concluding Remarks and Participant Experience Survey (5 m)***

## **Round 3**

### **Topic Prioritization Survey and Dialogue Guide**

#### ***Method for Topic Prioritization Survey***

Participants were asked to complete a questionnaire before their Round 3 session. The questionnaire asked them to rank the applications that had come up so far in the study as high, medium, or low priority. They were then asked to consider barriers to their high or medium priority applications, and then rank the feasibility of those applications based on how easy they thought the barriers would be to address. This process was repeated for concerns. The results were analyzed for each session in advance and used to narrow the discussion.

#### ***Dialogue Guide***

#### ***Opening and Topic Prioritization Survey Results Review (20 m)***

- Review study aim and guidelines for respectful dialogue.
- We created the topic prioritization survey after hearing from many of you in the last round that the discussion was too broad, simply because there is so much to talk about. The topics on the slides were ones that three or more participants voted on as high priority. As you can see, there are still many topics. We're going to do a bit more in-session polling to try to narrow it down further.
- Our goal is to focus in on about 10 related topics and develop some concrete recommendations for researchers and policy makers.

#### ***Dialogue***

- Let's share a bit about why we prioritized the topics we did. Why are they important to us?
- What barriers do we anticipate to high priority applications? How should they be addressed? Who should address them?

- What barriers do we anticipate to resolving our high priority concerns? How should they be addressed? Who should address them?

### Member-Checking Survey

At the conclusion of the data collection period, all participants who took part in at least 1 session were invited to provide feedback on preliminary study findings. Findings were framed as 6 recommendations. Participants were invited to improve the wording of the recommendations, add details they believed were essential to capture, and contribute any other reflections. Four of 6 recommendations are not included here, as they pertain to findings that will be published elsewhere.

System leaders who did not take part in sessions were also invited to review findings. Sixteen participants provided complete responses, including 12 providers and 4 patients. Two system leaders who did not take part in a dialogue session also provided reflections.

### Future Perspectives on AI in Canadian Primary Care: A Deliberative Dialogue Series

#### Recommendation Feedback Survey

From September 9th to September 24th, 2020, 22 patients and 21 interprofessional primary care providers representing 7 provinces met over 9 virtual deliberative dialogue sessions. Participants worked together to identify useful applications of AI in primary care and outline concerns about AI technology. Many ideas about how AI should be used to benefit Canadian primary care arose organically during these sessions.

On October 13th and 15th, groups of patient and provider participants from previous sessions met with health system leaders for the final round of deliberative dialogues. Participants developed recommendations related to a narrow set of AI use cases and concerns voted on in advance of sessions.

This survey presents 6 recommendations based on early interpretations of data from the final round and previous phases of the study; detailed analysis is ongoing. We designed this survey to provide you with a *voluntary* opportunity to:

- Clarify the research team's understanding of your ideas and opinions, or improve the wording of recommendations,
- Add details you believe are essential to capture in recommendations, and
- Contribute any final thoughts to the study, including new recommendations.

The research team will analyze your feedback and incorporate it into a final set of recommendations presented in research publications. If you asked to receive copies of these reports during your intake interview, you will receive them sometime in 2021.

**Recommendation 1:** Initial applications of AI in primary care should alleviate the burden of administrative tasks for providers to create more time and mental space for patients and providers to focus on patient-centered care.

### Context:

- There was broad consensus among the participants across sessions that AI will supplement primary care providers' roles and skills rather than substitute them.
- Patients and providers were enthusiastic about advanced AI-enabled clinical decision support (CDS) tools, particularly those that synthesize current evidence and patient histories to support diagnostics and treatment planning. However, they identified several issues to address before such tools can be deployed successfully in care settings, including data quality, availability, and security.
- Participants agreed that AI is best applied in the near-future to tasks such as automating charting, managing referrals, issuing prescriptions, or sending reminders.
- The desired benefit of offloading administrative tasks to an AI is to promote patient-provider face time and shared decision-making that accounts for patient values, preferences, and circumstances.

*Is there anything you would like to add to the above recommendation? We invite you to:*

- Improve the wording of the recommendation,
- Add details you believe are essential to capture in the recommendation or context, and
- Contribute any other reflections on the recommendation.

**Recommendation 6:** Primary care providers should be trained to use AI tools to protect core clinical skills and enhance critical appraisal abilities.

### Context:

- Patient and provider participants agreed that practicing primary care providers and trainees must not be taught to rely on AI tools as substitutes for clinical reasoning skills. Instead, providers and trainees must be taught how to appropriately use AI tools as supplements in their reasoning processes and workflows.
- Several provider participants identified a need for:
  - A scientific evidence base that describes the performance of AI technologies. Many provider participants said they would be reluctant to use an AI tool sold by a private developer if it was not evaluated through peer-reviewed research.
  - Critical appraisal frameworks that are developed and endorsed by trusted sources to help practicing providers decide if a tool is safe and effective to use in caring for their patient population.



- Several provider participants also highlighted the need to clarify the management of medical-legal liability if AI tools in clinical decision-making.
- Provider participants felt that provider training is an important part of managing burnout and ensuring usability of AI tools.

*Is there anything you would like to add to the above recommendation? We invite you to:*

- Improve the wording of the recommendation,
- Add details you believe are essential to capture in the recommendation or context, and
- Contribute any other reflections on the recommendation.

## Appendix 2.

### Participant Informational Module

#### Future Perspectives on AI in Canadian Primary Care: A National Deliberative Dialogue Series, September 9th-October 15th, 2020; prepared by Tara Upshaw, MHSc student

1. Introduction
2. Deliberative Dialogues: What to Expect
3. Artificial Intelligence: An Overview
  - 3.1. Machine Learning
  - 3.2. Deep Learning
  - 3.3. Other AI Methods
4. AI in Medicine and Health Care
5. Applying AI in Primary Care
6. Ethical Considerations When Applying AI to Health Data
7. Summary
8. Presession Questionnaire
- References
- Glossary

### 1. Introduction

*What is the purpose of this module?* You have received this module because you are participating in the research study: **Patient, provider, and health system leader perspectives on artificial intelligence technology in primary care**. You do not need to know anything about artificial intelligence (AI) to participate in this study. This module is meant to teach you about AI and its possible uses in primary care so that you can feel comfortable talking with other participants.

You are not expected to be an expert on AI, and you will likely have further questions after reading this module. We encourage you to bring these questions to your sessions, along with your views and ideas.

This module will:

- Describe the design of the study and what to expect during your sessions
- Define AI and describe computer programming methods that underlie AI technologies
- Explore applications of AI in medicine broadly
- Describe possible applications of AI in primary health care
- Describe ethical considerations when applying AI in the context of health care.

*Where does this information come from?* A variety of sources, including academic literature and consultations with experts in health information technology and AI. A reference list and a glossary of **bolded** terms is available at the end of this document.

*How long will this module take to complete?* This module will take most people about 30 minutes to read. There is a short questionnaire at the end that will take up to 5 minutes to fill out. This questionnaire must be completed online.

*How does the module work?* The online module is delivered using a secure survey platform. You received a custom link that saves your progress and tracks your questionnaire responses. Since you have chosen to review the printable PDF version, please remember to return to this link to complete the questionnaire when you are finished.

### 2. Deliberative Dialogues: What to Expect

*What is a deliberative dialogue?* A **deliberative dialogue** is a discussion among people involved in or affected by future decisions about a high-priority issue. A dialogue aims to bring stakeholders together to understand a topic in greater depth and share different views.<sup>1</sup> Each dialogue will involve up to 10 participants. Dialogue participants have an opportunity to identify what is important to them about an issue and work together with other participants to provide advice to researchers and policy makers. Results may include consensus recommendations and emphasis on areas of disagreement among participants.

*What is primary care?* **Primary care** refers to the services involved in health promotion, illness and injury prevention, and the diagnosis and treatment of illness and injury.<sup>2</sup> **Primary health care** is usually the point of first contact with a health care provider when you are sick or injured. Primary care providers include family physicians, nurse practitioners, pharmacists, and others that contribute to your holistic well-being, including social workers, dietitians, and traditional healers. Primary care providers help you move through the health system if you need more specialized care or enroll in social programs that can support your health.

*Why is a deliberative dialogue about the future of AI in primary care important?* Advances in AI are driving innovation in most industries, including health care. It is expected that AI *will* change primary care and other areas of health care soon.<sup>3</sup> Exactly how AI will change primary care is unclear because it is not widely used in most health care settings. Many factors will interact in complex ways, including primary care provider roles, patient preferences, policies, political considerations, and commercial interests. What is most important for the success of any AI-based technology is that its *function* matches the *needs* of patients, providers, and health administrators.

This deliberative dialogue series will help us understand how AI can be useful for people who use and work in primary care. Dialogues will allow us to anticipate how certain uses of AI will impact patient experience and clinic workflows. As well, the dialogues will help us form recommendations for policy makers and identify critical unanswered questions to address through future research.

*Who is involved in this dialogue?* Patients and providers from across Canada were invited to reflect diverse life and work experiences. Policy makers in all provinces and territories involved in shaping policies

that affect how AI is used in health settings were invited to participate. Most participants will take part in more than 1 round of the study.

**What will happen during the dialogues?** Deliberative dialogues will occur over 4 rounds (Appendix 2 Figure 1). Each round, a trained facilitator will work with participants to focus on a different aspect of AI in primary health care. Participants will receive short summaries of the previous dialogue rounds before their session. These summaries may include new information not included in this module that becomes relevant as the dialogues progress.

In *Round 1*, primary care patients and providers will meet in separate groups to discuss the application of AI in primary care and identify possible priority uses.

In *Round 2*, patients and providers will meet *together* to explore 3 use cases “prioritized” in the previous round. Discussions will focus on the impact that an application may have on patient experience and clinical workflows. With help from the facilitator, participants may form preliminary recommendations for policy makers and researchers.

In *Round 3*, policy makers from across Canada will meet to discuss key findings from Rounds 1 and 2 and provide insight into relevant policy contexts.

In *Round 4*, representatives from all 3 participant groups will meet together to integrate Round 3 input from policy makers. Participants may adjust priority uses, revise or finalize recommendations, or highlight important areas of disagreement.

**What is my role as a participant?** As a participant, your role is to bring your unique perspective to the discussion and learn from others’ perspectives. The facilitator may ask participants to develop the reasoning behind their views and ideas. The information you read and hear may inform your opinions, and your opinion might (or might not) change over time. A dialogue is about embracing diverse views among us and

finding ways we can work together to guide future directions.

#### **What is the role of others?**

**Facilitator:** The facilitator will work with participants to:

1. Discuss questions prepared by the research team and questions that emerge during the discussion
2. Help participants form recommendations
3. Respectfully explore areas of disagreement.

**Observer:** A research staff member will attend all sessions to take notes on the discussion and support session logistics.

#### **Are my contributions to dialogues confidential?**

Participants are free to use the *information* gained during dialogues. We ask that all participants not disclose the identity or the affiliation of a speaker. In other words, it is okay to talk about the dialogues with people who did not take part, but we cannot credit anything we hear to a specific person or the place they work.

All participants will only be asked to identify themselves by their first name and their participant type (ie, patient, provider, or policy maker) during the session. We will provide instructions for setting your username on Zoom.

Sessions will be audio-video recorded. Recordings will be password-protected and stored on secure servers at St. Michael’s Hospital. Only members of the study team will have access to recordings. Any identifying information will be removed during analysis.

### **3. Artificial Intelligence: An Overview**

In this section, we will define AI and review common computer programming methods used to create most everyday AI-based applications. By the end of this section, you should understand how deep learning methods fit within AI, and how AI relates to Big Data (Appendix 2 Figure 2). Do not worry about memorizing details. Focus on the big picture and use the glossary if you need to jog your memory on specific terms.

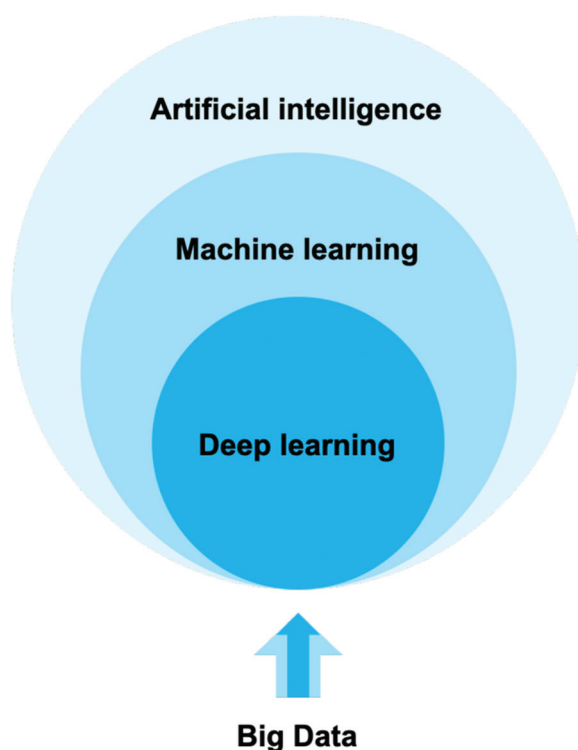
We will use the terms “algorithm,” “system,” “program,” and “method” interchangeably when talking about AI. AI methods are computer algorithms. An **algorithm** is a set of step-by-step instructions for solving a problem. A computer algorithm can be simple (eg, if it is Saturday at 9 AM, send a reminder) or complex (eg, Identify pedestrians).<sup>4</sup> We will learn more below about how AI algorithms can be combined to produce applications with complex “intelligence” functions.

**What is artificial intelligence?** Artificial intelligence is a broad field of science concerned with getting computers to do tasks that would normally require human intelligence. In this definition, intelligence refers to processing information, reasoning and learning, planning actions, and communicating in natural language. Another way to think about AI is as a *general-purpose prediction technology* that estimates missing information from available information.<sup>5</sup>

**Appendix 2 Figure 1. Session topics for *Future Perspectives on AI in Canadian Primary Care* dialogue series.**

Round 1	<div> <div>Patients (3 sessions; 6–10 people)</div> <div>Providers (3 sessions; 6–10 people)</div> </div> <p>Objective: Identify possible priority uses of AI in Canadian primary health care</p>
Round 2	<div>Patients and providers (3 sessions; 6–8 people)</div> <p>Objective: Explore implications of three use cases on clinic workflows and patient experience</p>
Round 3	<div>Polymakers (1–2 sessions; 6–10 people)</div> <p>Objective: Explore policy and technology considerations related to identified use cases</p>
Round 4	<div>Patients, providers, and policymakers (3 sessions; 6–8 people)</div> <p>Objective: Refine priorities + recommendations; identify outstanding questions</p>

Appendix 2 Figure 2. Artificial intelligence, machine learning, and Big Data (adapted from Jillian Macklin).



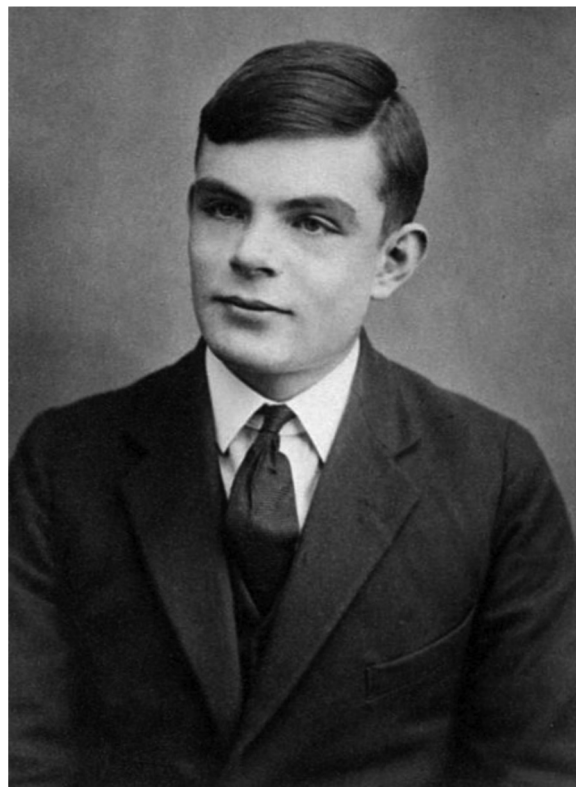
Alan Turing (Appendix 2 Figure 3) established the concept of AI in 1954.<sup>6</sup> Since then, computer scientists have developed a variety of methods that allow computers to mimic human intelligence. These methods can be grouped into several types; each type is suited to particular intelligent tasks. A combination of methods is usually used when developing AI technologies.

Today's AI applications are "narrow." **Narrow AI** programs can only do what they were designed to do.<sup>7</sup> For example, an AI program that can beat a human in a chess match cannot solve a complicated math problem. "Narrow" AI applications are often better than humans at the tasks they were designed for but cannot develop additional skills without being programmed by humans.

In contrast, **general AI** refers to a single system that can learn in different situations and then apply broad knowledge to solve any kind of problem—like the human mind!<sup>7</sup> This is what many people think of when they hear "AI." There are currently no actual examples of general AI. This is not surprising when we consider the complexity of human learning and problem-solving.

**What is Big Data? How is it related to AI?** "Big Data" is a term used to describe data produced by a variety of sources in large volumes at a fast pace. Big Data has grown across industries in the last 3 decades because of advances in computer processing power and storage, widespread adoption of mobile devices, and increased Internet availability.<sup>8</sup> AI methods allow

Appendix 2 Figure 3. Passport photograph of Alan Turing, the father of artificial intelligence, at age 16, by unknown author/CC BY 4.0.



us to condense and make sense of these datasets. Advances in machine and deep learning in the past 10 years have depended on the availability of large, labeled "Big" datasets.

A **dataset** is a collection of data gathered using the same criteria for a specific purpose. Datasets from different sources can be shared and combined to create **linked datasets**. Linked datasets contain a broad range of information that can be analyzed to shed light on complex issues. When linked data are used for research purposes, they are **deidentified** to reduce the possibility that they could be traced back to any individual.

For example, the Insurance Corporation of British Columbia (ICBC) collects data from individual drivers in BC each time a person renews their car insurance. The Medical Service Plan collects data on visits to physicians in British Columbia. These 2 datasets could be shared and combined to reveal relationships between health care use and driving practices.<sup>9</sup> As information technology continues to develop, new sources of data will appear, allowing new linked datasets to be created. New linked datasets offer new opportunities for research in many areas, including AI.<sup>9</sup> We might explore data linkage in more detail during Round 2 of the study.

The following sections describe some common AI methods that form the basis of most modern AI applications. All of these methods work best when applied to Big Data.



### 3.1 Machine Learning

**What is machine learning?** Machine learning refers to AI methods where a computer program learns from experience over time.<sup>8</sup>

For example, algorithms that detect spam e-mails are “trained” through exposure to many examples of e-mails that have been manually labeled as spam or not spam. The spam-detection algorithm will learn particular words or combinations of words that increase the chance that an e-mail is spam. A feedback loop can be used to help the program improve after making a mistake.

The spam-detection album is an example of **supervised learning**, in which labeled examples (in this case, e-mails labeled as spam or not spam) are included in a *training* dataset. In **unsupervised learning**, there are no labeled examples and an algorithm instead groups data by similarities. Unsupervised machine learning is increasingly used to drive discovery in basic science and medical research by revealing unexpected relationships among data. Both types of learning will test the performance of an algorithm on a *test* dataset that the algorithm has never analyzed before.<sup>4</sup>

As narrow AI, machine learning algorithms are usually more accurate than humans at the prediction tasks they are trained for. A machine learning AI system is not truly intelligent because it does not understand what it was trained to do. A spam-detection algorithm can be great at filtering spam, but it will never understand *what* spam is and why it is bad in the way humans do. If a new type of spam emerges, it will probably have to be retrained by a (human) computer programmer to recognize it.

Machine learning forms the basis of most AI systems.

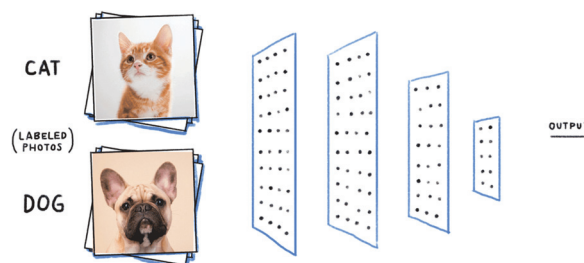
### 3.2 Deep Learning

**What is deep learning?** Deep learning refers to a subtype of machine learning methods that identify hidden and complex patterns in a dataset. These patterns can be used to classify new data into a defined category (ie, using supervised learning methods) or group new data by similarity (ie, using unsupervised learning methods) with very high accuracy.<sup>10</sup>

Deep learning is a more recent type of AI that has improved existing technologies and helped create others that were not possible before, like self-driving cars. The distinguishing characteristic of a “deep” learning algorithm is the use of many layers (Appendix 2 Figure 4). Each layer identifies different features of the data set; combining the layers allows for detection of complex patterns that can be used to make very accurate predictions. With “shallow” AI methods like classic machine learning, scientists must spend time:

1. Identifying data features important for making accurate predictions, and
2. Manually transforming these features into math a computer understands.

Appendix 2 Figure 4. Layers of a supervised deep learning algorithm, by unknown author.



Deep machine learning is powerful because it eliminates the need for manual feature selection and representation. This allows for much more complex prediction tasks.

Consider the example of distinguishing photographs of cats from dogs—a popular project for AI developers-in-training (Appendix 2 Figure 5). This initially seems like a simple task because we have been doing it all our lives—but think about what makes a dog *visually* different from a cat. Both have 4 legs, 2 eyes, and 2 ears—all roughly in the same position. Both have a tail and come in different colors. Dogs and cats can be similar in size.

So, *how do we know they are not the same?* Looking closely at the photographs, you will find no hard-and-fast rules for deciding. Yet, we can still tell the difference, but it is hard to pinpoint how we do it. Most of us will say that it has something to do with a subtle pattern of features that exist uniquely together. We have learned these patterns over time and by exposure to examples, and probably by making a few mistakes.

Appendix 2 Figure 5. Example photographs of cats and dogs that can be used to train a deep learning image classification algorithm, by unknown author.



As you can imagine, these visual relationships are extremely difficult to represent in computer language.

Deep learning methods solve this problem by automatically detecting features of a dataset and defining relationships between them in mathematical terms a computer understands. This mimics the nuanced and highly accurate process of human pattern recognition. Humans can learn to categorize or group objects pretty well from a small number of examples. Deep learning algorithms learn from thousands or even millions of examples, making them extremely accurate at the prediction task they are designed for.

It is important to note that the “features” that a deep learning algorithm extracts from a dataset are abstract mathematical *representations* of data qualities. They are not always concrete qualities that we can easily name. This can make it difficult to precisely understand how a deep learning AI system arrives at a prediction, even when it is correct. This is called **non-explainable AI**. For this reason, deep learning algorithms are often compared with a “black box.”<sup>10</sup>

Deep learning is well suited to prediction problems in medicine because health and disease often involve complex interactions. As you can imagine, it is sometimes necessary for clinicians to understand contributing factors to an illness or injury to inform effective prevention and treatment. Efforts to develop “explainable” deep learning systems are ongoing.

### 3.3 Other AI Methods

**Natural language processing** (NLP) refers to AI methods used to interpret human communication and reproduce it in various forms.<sup>4</sup> In combination with deep learning, NLP is the basis of automated translation services like Google Translate, chatbots, and virtual personal assistants such as Apple’s *Siri* and Amazon’s *Alexa*. Most advanced NLP systems also use deep learning.

Computer vision refers to AI algorithms that interpret digital images or videos.<sup>10</sup> Computer vision underlies facial recognition software and autonomous vehicles. Modern computer vision systems almost always use deep learning to perform their function.

For example, social media platforms like Instagram, Snapchat, Facebook, and TikTok use computer vision for their video filter technology (Appendix 2 Figure 6). Filters use an AI algorithm to detect the features of a digital image that represent a human face. An animated filter is then applied to the face and can follow that face’s movement in the frame.

Cognitive analytics and robotics are other types of AI we will not discuss in depth for this study.

**If you would like to take a break and return to this booklet later, this is a good place to pause.**

## 4. AI in Medicine and Health Care

As we have learned, AI is not so much 1 thing as a set of computer programming methods for analyzing large volumes of data from various sources to identify patterns. Patterns within data can be used to make

**Appendix 2 Figure 6. Facebook CEO Mark Zuckerberg demonstrates Facebook’s facial filtering technology by Mark Zuckerberg.**



highly accurate predictions. Predictions can add value to a wide range of tasks or problems in most industries, including health care.

Several factors are driving the adoption of AI in health care today.<sup>11</sup> First, labeled digital health datasets have grown exponentially in the past 30 years. This is the combined result of:

- Development of comprehensive **administrative datasets** that track a patient’s journey through a healthcare system
- Widespread adoption of **electronic medical records** (ie, the computer software your doctor enters notes into during a visit)
- Advances in medical imaging technology
- Decreased costs of genomics technology (ie, gene sequencing and mapping) resulting in more **genomic data**



- Broad uptake of “wearable” devices that track **physical data** like your heart rate, body mass index or your blood glucose levels.

These datasets can potentially be linked to provide a detailed data profile of an individual or a population. Second, faster hardware emerged in the mid-2000s that allowed for the computational power necessary to analyze such large and high-variety datasets using deep learning.

Clinical application of AI (especially deep learning) has been most rapid in medical disciplines that rely heavily on medical imaging. In many cases, deep learning AI systems outperform individual clinicians when interpreting medical images. For example, a group of AI scientists at Stanford University in California developed an AI algorithm to diagnose skin cancer from pictures of abnormal skin marks using deep learning and computer vision methods (Appendix 2 Figure 7).<sup>12</sup> The algorithm was trained on 129,450 images of skin conditions labeled as cancer or not cancer by dermatologists. Algorithm performance correctly classifying skin cancer was compared with the performance of 21 dermatologists. Algorithm accuracy was equal to or better than that of most dermatologists involved in the study. To our knowledge, this tool has not yet been tested in clinical settings.

Increasingly, health care organizations are interested in applying deep learning AI to develop **risk stratification** tools that can organize patients according to their risk level for a health event.<sup>13</sup> These tools can be used to inform preventative care and support hospital operations (eg, staffing changes when care needs will likely be high). When implemented in clinical practice, a provider may increase support for individuals at increased risk for a particular event, shifting health care resources to those predicted by an algorithm to have the most need.

For example, a group of AI researchers at the University of California applied deep learning AI to raw data from patient electronic medical records to predict hospital readmission and death.<sup>14</sup> The algorithm was tested on 2 hospital electronic medical records datasets and predicted events more accurately than existing non-AI predictive models. Other researchers have developed tools that can predict blood infection risk or delirium during a hospital stay, among many other examples.

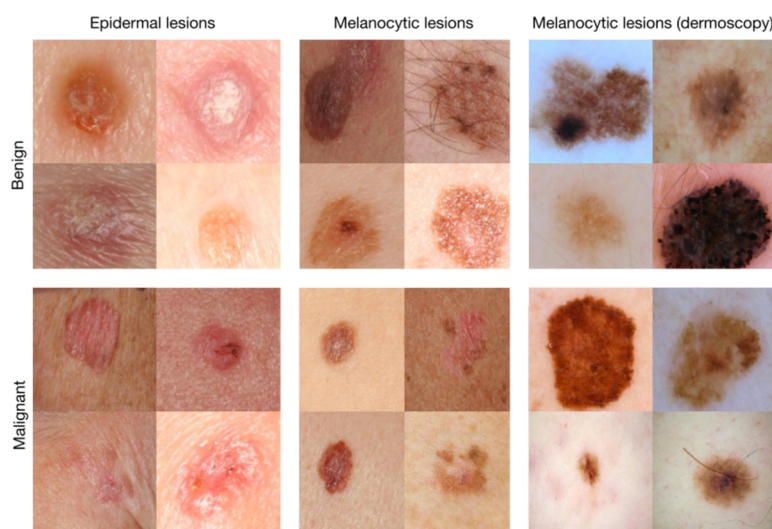
It is important to note that few algorithms developed by AI researchers have been widely implemented in clinical practice. This limits our understanding of how well prototype tools integrate within existing health care delivery systems or improve patient health.

## 5. Applying AI in Primary Care

*What kind of data are created through primary care?* **Electronic medical records (EMRs)** are the richest source of data in primary care. In Canada, more than 70% of primary care settings in most provinces collect and store patient data in electronic health records.<sup>15</sup> EMRs contain **clinical data**—data collected by a hospital or provider to provide appropriate health care services. Clinical data include

- Sociodemographic information, such as your age, race or ethnicity, gender, or income level,
- Laboratory and medical imaging test results, and
- Unstructured notes your provider makes during your visit. These notes may include descriptions of your symptoms, existing health conditions, or even important life events, such as the loss of a loved one.

**Appendix 2 Figure 7. Example images from a test dataset used to assess the performance of a deep learning algorithm by Esteva et al.<sup>12</sup>**



EMRs also contain your provincial health insurance number. EMRs can be linked with administrative data maintained by your provincial health authority that records your health system encounters. It is now possible to sync vital sign or activity data from wearable devices (eg, Apple Watch or Fitbit) with many EMR systems.

These data are difficult to condense and analyze for use during a clinic visit. The AI methods we have discussed can be applied to create value for primary care patients and providers.

**Is primary care ready for AI?** As with other medical disciplines, there are currently few examples of widely used AI tools in primary care. Searching online, you will find many tools developed by private companies that could be used in primary care. Some of these are likely already in use in some primary care settings. For most of these tools, there is little academic research on their effectiveness in improving health.

In addition, a 2020 review found that research specific to AI in primary care is in the early stages of maturity.<sup>16</sup> Of 405 studies identified in the review, most were focused on developing or improving AI methods to achieve good algorithm performance, and not on how those tools function in a clinical setting. Only 14.1% of study teams included primary care providers. The authors of this review emphasized the need for research that:

1. Involves interdisciplinary research teams that include people with direct clinical experience
2. Engages end users (eg, patients, providers, or administrative staff) throughout the development of AI applications
3. Evaluates the effectiveness of AI-based tools for improving health when used in primary care settings.

**What can AI do for primary care?** It is not guaranteed that AI will transform primary care or any other areas of medicine. Sometimes new technology has unexpected consequences.

For example, EMRs were expected to massively increase efficiency for physicians. EMRs made it easier for providers to bill provincial health insurance plans for their services, but many providers find they have to spend more time typing to maintain the patient chart than interacting with their patients. This ‘4000-clicks-a-day’ problem has been linked to physician burn-out.<sup>17,18</sup> This problem exists because EMRs were designed to improve billing efficiency and not patient-centered care. What is most important to any new technology’s success is that its *function* matches the end user’s needs.

Appendix 2 Table 1 lists examples of ways AI may be applied to primary care data. Some of these examples are based on commercially available applications or prototype algorithms described in published research. Other examples are possible with today’s AI methods and existing primary care data sources but haven’t been created yet.

As you read, think about what use cases stand out to you. Which examples would most improve your experience as a patient or your job as a provider? Which ones do not seem as useful? Can you think of other

problems in primary care that could be addressed by AI? Can you anticipate issues that might arise if you had to use a particular application?

These are some of the questions that we will explore more in-depth throughout the deliberative dialogues. On the last page of this module, you will be asked to list some of the use cases that you think are important or interesting or other ideas you have about where AI could be applied in primary care.

## 6. Ethical Considerations When Applying AI to Health Data

AI has great potential to improve health and health care, but as with all innovations, there are limitations. These limitations raise some important ethical questions.

**What is bias? Why does it matter?** Many researchers have shown that non-health-related AI can worsen existing social inequalities by duplicating or worsening race, gender, and other biases.<sup>22</sup> **Bias** describes a preference for 1 thing, idea, person, or group compared with another, usually in a way that is considered unfair.

It is important to realize that *AI algorithms are only as good as the data they are trained on*. Some groups of people with better access to health care may contribute to health datasets more than other groups. AI algorithms trained on datasets that poorly represent certain groups may make less accurate predictions for members of those groups.

When used in health care decision-making, biased predictions can worsen health inequality between groups.

Consider the following hypothetical example:

*A provincial health services agency partners with a private company to develop an AI algorithm that identifies patients at high risk of serious complications from their chronic diseases. The goal is to use this algorithm to target more supportive primary care resources to these patients to reduce their risk and improve their overall health.*

*The company links the primary care EMR data for all provincial residents with system administrative records and applies explainable, supervised machine learning methods. The primary variable used for prediction is the historic costs of care. Patients who have previously received the most health care are the first to be targeted with new comprehensive care management programs. The company files a patent on the algorithm.*

*A few providers notice that most of the patients flagged as high risk are White. They voice their concern to the provincial health authority, which then hires an external group of scientists to evaluate the algorithm under a strict nondisclosure agreement. The scientists learn that most of the patients flagged by the algorithm are not the sickest patients in the province. Black and nonstatus Indigenous patients are sicker on average than other racial groups, but data on sickness were not included when training the model.*

*Adjusting for sickness, the researchers find that Black patients should be receiving 46.5% of comprehensive care program resources instead of the current 17.7%. Nonstatus*



**Appendix 2 Table 1. Potential Uses of AI in Primary Care**

Category	Definition	Example
Self-care, illness prevention, and wellness	Tools that support people in living healthier lives	A machine learning algorithm analyzes vital sign data from a patient's smartwatch in real time, documenting trends in their primary care electronic medical record (EMR). They receive personalized reminders to exercise, eat well, and get enough sleep. Their physician is alerted when trends show a decline in heart health.
Triage and early diagnosis	Tools that help triage patients and identify the need for additional health resources	A machine learning-based symptom checker informs a patient with a gradual development of severe foot pain to book an appointment with their primary care provider as early as possible.
Diagnostics	Tools that assist providers with point-of-care diagnosis	A primary care provider uploads a cell phone photo taken of a patient's retina to an app that uses deep learning to predict the risk of complications from diabetes. He refers the patient to an ophthalmologist. <sup>19</sup>
Clinical decision support	Tools that structure relevant information to help physicians determine treatment course or need for referral to specialist or acute care services	An EMR-integrated machine learning algorithm predicts which patients are at high risk for becoming infected with HIV within a 3-year timeframe. Risk profiles can help primary care providers who would most benefit from pre-exposure prophylaxis medications. <sup>20</sup>
Care delivery	Tools that support direct interactions between patients and providers	A natural language processing tool automatically converts the conversation between a patient and provider into chart notes, orders laboratory tests, and writes referrals to specialists during a clinic visit. This tool can also reach out to patients in advance of the appointment to gather necessary information. <sup>21</sup>
Chronic care management	Tools that help patients and providers manage chronic diseases like diabetes or heart disease	A patient with diabetes has a blood glucose monitor that syncs with an AI-based app on their phone. The algorithm learns the patient's dietary and insulin delivery schedule over time. It begins to send helpful reminders to eat, check blood glucose, and inject insulin. The app is integrated with the patient's primary care EMR. It notifies the provider when the patient's insulin needs appear to change significantly.
Population health management	Tools that analyze large datasets to identify trends in population health to inform shifts in clinical programs and intervention targeting	A deep learning algorithm analyzes a clinic's raw EMR data. It identifies the patients at the highest risk for hospital admission within the next 30 days. Providers in the clinic schedule appointments with these patients to discuss their health and preventative interventions. <sup>14</sup>
Health care operations	Tools that decrease time spent on routine administrative tasks that occur in the background of patient care	A classical machine learning algorithm learns that times and days of the week where appointments are in highest demand, and helps clinic clerical staff optimize the staffing schedule

*Indigenous patients should receive 23.4%, instead of 4%. It is well known that non-White people in Canada and the United States experience more barriers to accessing health care. This means that their overall health care costs are decreased compared with White people, even though their health needs are greater, on average.*

This example is based on a published scientific analysis of a real AI algorithm applied to 200 million people each year in the United States.<sup>23</sup> This algorithm is not a unique case but represents a general approach to risk prediction in the health sector. If health systems use biased algorithms when distributing health resources, the health of certain groups will improve while the health of others will get worse. To combat bias, many researchers have emphasized the importance of including patients, clinicians, and ethicists from the beginning when developing AI applications for use in patient care.

#### ***What other ethical considerations are there?***

There are other ethical questions relevant to the above example. What about the patients whose data were used to train the model? Did they agree to have their data used for the development of the tool? Do they *have* to consent? How do you feel about your health data being used to train an AI algorithm used in other people's care?

Many private companies do not want to disclose their methods for developing a novel AI tool and file patents to protect this information. How can we trust that a tool marketed by a private company is unbiased and safe to use for *all* patients? Should developers and health care providers have to tell the public if they learn that an algorithm they are using is biased? What if a tool was instead developed and sold by researchers who published their methods in academic journals reviewed by other researchers?

And what about the "black box" quality of some deep learning AI systems? When is it important for the patient and provider to know what features of a dataset contribute to a prediction?

As you can see, many important ethical questions arise when we think about the use of AI tools in health care settings. There are currently no clear answers to many of these questions.

## 7. Summary

Artificial intelligence is a broad field of science concerned with getting computers to do tasks that would normally require human intelligence. AI methods can be applied to large datasets to identify relationships and extract meaning. These relationships can be used to sort new data into predefined categories or group data by similarity. Machine learning, deep learning, computer vision, and natural language processing are all types of AI that can be used alone or together to get a computer to perform a narrowly defined task. All of these methods work best when applied to large datasets.

Both growth in labeled digital health datasets and increases in computer processing power are driving the adoption of AI in health care today. Clinical application of AI has been most rapid in medical disciplines that rely most on medical imaging. There is growing interest in applying deep learning AI to develop risk stratification tools that can organize patients according to their risk level for a health event. To date, few algorithms developed by AI researchers or companies have been widely implemented in clinical practice. This limits our understanding of how well prototype tools integrate within existing health care delivery systems or improve health.

Primary care electronic medical records are a rich source of data that can be linked to other datasets, including data about health system encounters and data from wearable devices. The AI methods we have discussed can be applied to these data to create a wide variety of applications that may add value to primary care patients and providers. It is not guaranteed that AI will transform primary care or any other areas of medicine. Researchers studying this area have emphasized the importance of involving primary care patients, providers, and health administrators in the process of developing useful AI applications that address the needs of end users. It is also important to evaluate AI tools to be certain that they actually improve patient care.

There are some limitations to AI that raise important ethical questions. AI algorithms are only as good as the datasets they are trained on. Datasets that poorly represent certain groups may result in AI algorithms that make less accurate predictions for members of those groups, leading to bias. When used in health care decision-making, biased predictions may worsen existing social inequalities in health. Issues like consent to data use are also important to consider when applying AI in health care settings.

## 8. Pre-session Questionnaire

Please return to the online module to complete the questionnaire at least 2 hours before your first session.

## Glossary

**Administrative data:** Data collected in the course of providing and/or paying for services (eg, hospital admissions, physician visits).

**Algorithm:** A set of step-by-step instructions for solving a problem. A computer algorithm can be simple (eg, If it is Saturday at 9 AM, send a reminder) or complex (eg, Identify pedestrians).

**Artificial intelligence:** A broad field of science that is concerned with getting computers to do tasks that would normally require human intelligence; a *general purpose prediction technology* that estimates missing information from prior information.

**Bias:** A preference for 1 thing, idea, person, or group compared with another, usually in a way that is considered unfair.

**Clinical data:** Data collected by a hospital or provider to provide appropriate health care services.

**Computer vision:** AI algorithms that interpret digital images or videos.

**Dataset:** A collection of data gathered using the same criteria for a specific purpose.

**Deidentified data:** Data where identifiers such as a person's name and address have been removed to reduce the possibility that the data could be traced back to any individual.

**Deep learning:** A subgroup of machine learning algorithms that identify hidden patterns in a dataset. These patterns can be used either to classify new data into a predefined category (ie, using supervised learning methods) or group new data by similarity.

**Deliberative dialogue:** A discussion among people involved in or affected by future decisions about a high-priority issue. A dialogue aims to bring stakeholders together to understand a topic in greater depth and share different views.

**Electronic medical record:** Digital records kept by hospitals or individual providers that contain clinical data.

**Explainable AI:** AI algorithms where the features of a dataset that contribute to a pattern are possible to identify and define.

**General AI:** A single system that can learn in different situations and then apply broad knowledge to solve any kind of problem. There are currently no actual examples of general AI.

**Genomic data:** Data describing DNA sequences.

**Linked dataset:** Dataset created when 2 datasets from different sources are combined. Linked datasets contain a broader range of information than either of the original datasets.

**Machine learning:** AI methods where a computer program learns from experience over time.

**Narrow AI:** AI programs that can only do what they were designed to do. "Narrow" AI applications are often better than humans at the tasks they were designed for but cannot develop additional skills without being programmed by humans.

**Natural language processing:** AI methods used to interpret and reproduce human communication.

**Nonexplainable AI:** AI algorithms where the features of a dataset that contribute to a pattern are difficult or impossible to identify and define.

**Physical data:** Data about how your body is functioning from moment-to-moment, such as your heart rate or blood glucose levels; often collected from wearable devices.

**Primary care:** The services involved in health promotion, illness and injury prevention, and the diagnosis and treatment of illness and injury; usually the point of first contact with a health care provider when you are sick or injured.

**Risk stratification:** Organizing people into risk levels that can be used to guide decisions. Risk stratification can be carried out using statistical models.

**Supervised learning:** A type of machine learning where an algorithm learns from labeled examples or positive and negative cases. Supervised learning is used to assign data into predetermined categories.

**Unsupervised learning:** A type of machine learning where an algorithm learns without examples. Unsupervised learning is used to group data by similarities.

## References

- Boyko JA, Lavis JN, Dobbins M. Deliberative dialogues as a strategy for system-level knowledge translation and exchange. *Health Policy* 2014;9:122–31.
- Government of Canada [Internet]. About primary health care; 2012 [cited 2020 Sep 4]. Available from: <https://www.canada.ca/en/health-canada/services/primary-health-care/about-primary-health-care.html>.
- Upshur R [Internet]. Artificial intelligence, machine learning and the potential impacts on the practice of family medicine: a briefing document; 2019. Available from: <http://www.ams-inc.on.ca/wp-content/uploads/2019/05/AMS-CFPC-paper-PRINT.pdf>.
- Hutson M. AI glossary: artificial intelligence, in so many words. *Science* 2017;357:19.
- Shaw J, Rudzicz F, Jamieson T, Goldfarb A. Artificial intelligence and the implementation challenge. *J Med Internet Res* 2019;21:e13659.
- Buchanan BG. A (very) brief history of artificial intelligence. *AI Mag* 2005;26:53.
- Davidson L [Internet]. Narrow vs. general AI: what's next for artificial intelligence?; 2019 [cited 2020 Sep 4]. Available from: [https://www.springboard.com/blog/narrow-vs-general-ai/#:~:text=Narrow AI \(ANI\) is defined,and advances in that spectrum](https://www.springboard.com/blog/narrow-vs-general-ai/#:~:text=Narrow AI (ANI) is defined,and advances in that spectrum).
- Beam AL, Kohane IS. Big data and machine learning in health care. *JAMA* 2018;319:1317–8.
- Teng J, Burgess M, McGrail K, Bentley C, O'Doherty K [Internet]. Research data use in a digital society: a deliberative public engagement; 2019. Available from: <https://cpb-ca-c1.wpmucdn.com/sites.uoguelph.ca/dist/0/126/files/2021/11/Data-Deliberation-2019-Booklet.pdf>.
- Lecun Y, Bengio Y, Hinton G. Deep learning. *Nature* 2015;521:436–44.
- Naylor CD. On the prospects for a (deep) learning health care system. *JAMA* 2018;320:1099–1100.
- Esteva A, Kuprel B, Novoa RA, et al. Dermatologist-level classification of skin cancer with deep neural networks. *Nature* 2017;542:115–8.
- Topol EJ. High-performance medicine: the convergence of human and artificial intelligence. *Nat Med* 2019;25:44–56.
- Rajkomar A, Oren E, Chen K, et al. Scalable and accurate deep learning for electronic health records. *NPJ Digit Med* [Internet] 2018;1–10.
- Chang F, Gupta N. Progress in electronic medical record adoption in Canada. *Can Fam Physician* 2015;61:1076–84.
- Kueper JK, Terry AL, Zwarenstein M, Lizotte DJ. Artificial intelligence and primary care research: a scoping review. *Ann Fam Med* 2020;18:250–258.
- Hill RG, Sears LM, Melanson SW. 4000 clicks: a productivity analysis of electronic medical records in a community hospital ED. *Am J Emerg Med* 2013;31:1591–4.
- Wachter R, Goldsmith J [Internet]. To combat physician burnout and improve care, fix the electronic health record; 2018. Available from: <http://0-search.ebscohost.com.olinserver.franklin.edu/login.aspx?direct=true&db=buh&A N=128881532&site=eds-live>.
- Abramoff MD, Lavin PT, Birch M, Shah N, Folk JC. Pivotal trial of an autonomous AI-based diagnostic system for detection of diabetic retinopathy in primary care offices. *NPJ Digit Med* 2018;1:39.
- Marcus JL, Hurley LB, Krakower DS, Alexeeff S, Silverberg MJ, Volk JE. Use of electronic health record data and machine learning to identify candidates for HIV pre-exposure prophylaxis: a modelling study. *Lancet HIV* 2019;6:e688–e695.
- Saykara AI assistant for physicians [Internet]; 2020 [cited 2020 Sep 5]. Available from: <https://www.saykara.com/>.
- Wiens J, Saria S, Sendak M, et al. Do no harm: a roadmap for responsible machine learning for health care. *Nat Med* 2019;25:1337–40.
- Obermeyer Z, Powers B, Vogeli C, Mullainathan S. Dissecting racial bias in an algorithm used to manage the health of populations. *Science* 2019;366:447–53.