

ORIGINAL RESEARCH

Interactive Mobile Doctor (iMD) to Promote Patient-Provider Discussion on Tobacco Use among Asian American Patients in Primary Care: A Pilot Study

Janice Y. Tsoh, PhD, Thu Quach, PhD, Thomas B. Duong, BS,
Emily Sa Nan Park, BS, Ching Wong, BS, Susan M. Huang, MD, MS,
and Tung T. Nguyen, MD

Introduction: This study examined the feasibility, acceptability, and efficacy of an interactive “Mobile Doctor” intervention (iMD) for Korean and Vietnamese American men, population groups with high smoking prevalence rates.

Methods: The iMD delivers 5As (Ask, Advise, Assess, Assist, and Arrange) via tailored in-language video messages on a mobile tablet to Korean and Vietnamese male daily smokers right before a health care visit. A single-group trial was conducted with Korean- and Vietnamese-speaking patients at a federally qualified health center. Outcomes were assessed by self-reported surveys obtained postvisit and 3-month follow-up, and by examining electronic health record (EHR) progress notes from 3 consecutive primary care visits to evaluate impacts.

Results: Among 47 male daily smokers (87% participation rate), 98% were limited English proficient and 53% had no intent to quit smoking within 6 months. On average, iMD took 12.9 minutes to complete. All participants reported discussing smoking with their providers during the visit, and more than 90% thought iMD was at least somewhat helpful in their decision about quitting and in communicating with their providers. EHR-documented 5As were significantly higher at the iMD visit for Assess (38.3%), Assist (59.6%), and Arrange (36.2%) compared with other visits without iMD. At 3 months, 51% made at least 1 24-hour quit attempt since the intervention. The self-reported 7-day point prevalence abstinence was 19%.

Conclusions: iMD is feasible and acceptable to Korean and Vietnamese male smokers, including those who were not intending to quit smoking. It is a promising tool for increasing patient-provider discussion of tobacco use and possibly smoking cessation among Asian American male smokers. (J Am Board Fam Med 2018;31:869–880.)

Keywords: Asian Americans, Delivery of Health Care, Prevalence, Primary Health Care, Self-Report, Smoking Cessation, Tobacco Use.

Asian Americans are the fastest growing racial ethnic group in the United States.¹ Smoking prevalence remains high among Asian American men with limited English proficiency (LEP), including

Vietnamese (43%),² Korean (37%),^{3,4} and Chinese (29%) Americans.⁵ High social acceptability of smoking in the immigrants’ countries of origin⁶ and in the United States,^{7,8} low quit intention^{9–11},

This article was externally peer reviewed.

Submitted 17 January 2018; revised 12 June 2018; accepted 20 June 2018.

From Department of Psychiatry, University of California San Francisco, San Francisco, CA (JYT); Asian Health Services, Oakland (TQ, TBD, ESNP, SMH); Division of General Internal Medicine, University of California San Francisco, San Francisco (CW, TTN); Asian American Research Center on Health, San Francisco (JYT, TQ, CW, TTN).

Funding: This study was supported by the California Tobacco-Related Disease Research Program Community Academic Research Award grants: 21BT-0056H, 24AT-1300H, and 24AT-1301H.

Conflict of interest: none declared.

Corresponding author: Janice Y. Tsoh, PhD, University of California San Francisco, 401 Parnassus Avenue, San Francisco, CA 94143-0984 (E-mail: janice.tsoh@ucsf.edu).

and low use of smoking cessation resources^{11–13} among Asian Americans were the key challenges identified facing tobacco control in this population.

Physician advice to quit smoking can significantly increase quit rates.^{14,15} The US Public Health Services' Clinical Practice Guidelines for Treating Tobacco Use and Dependence recommended the use of the 5As model (Ask, Advise, Assess, Assist, and Arrange) to address the tobacco use of every patient at each health care visit.¹⁴ Yet, almost 8 million smokers every year did not receive physician advice to quit smoking.¹⁶ The 2011 to 2013 National Health Interview Survey found that only 41% of Asian American smokers, but 51% of all US adult cigarette smokers, reported that a health professional discussed smoking with them in the past 12 months.¹⁷

Because the low rate of physician advice to quit smoking may be due to time constraints, strategies for streamlining patient-physician communication are greatly needed, particularly with LEP and immigrant populations. There are few such intervention studies for Asian American smokers in clinical settings. Our team developed an "interactive Mobile Doctor" (iMD) intervention, an in-language mobile application consisting of questions that a smoker can answer, followed by tailored video responses. This intervention was designed to facilitate the delivery of the 5As in primary care settings to promote patient-provider discussion about tobacco use. This study examined the feasibility and acceptability of iMD for Korean- and Vietnamese-speaking male patients in a primary care setting.

Methods

Research Design Overview

This was a single-group feasibility trial with assessments conducted via telephone or in-person surveys from participants at baseline, postvisit (immediately or within 1 week after the clinic visit preceded by iMD intervention), and 3-month follow-up after the clinic visit. Participants were patients presenting for primary care provider (PCP) visits. Electronic health record (EHR) progress notes from participants were extracted to evaluate the impact of the intervention on the delivery of the 5As. The study was approved by the institutional review board of the Association of Asian Pacific Community Health Organizations and registered at ClinicalTrials.gov (identifier, NCT03064724).

Intervention Development

This study was a community-academic research collaboration between Asian Health Services (AHS) and the University of California, San Francisco (UCSF). AHS and UCSF collaboratively developed the iMD in Korean and Vietnamese languages that delivered 5As via tailored video messages on mobile tablets to Korean- and Vietnamese-speaking male smokers right before their PCP visits. The tailoring algorithm was guided by the principles of the 5As of the guidelines.¹⁴ The video contents and scripts were further informed by findings from focus groups with 17 Korean and Vietnamese smoking patients and 8 health care providers or clinic staff,¹⁸ along with smoking cessation education materials adapted from the team's prior study targeting LEP smokers.¹³ To increase relevance to the patients, AHS and UCSF medical providers were featured in the videos, delivering the health messages in Korean and Vietnamese languages. The video contents for the 2 ethnic groups were similar, with slight modifications to ensure cultural relevance (eg, culturally relevant proverbs, popular sayings, or images). The final version of the intervention videos integrated findings from a series of iterative pilot usability testing sessions with 3 Korean and 3 Vietnamese smoking patients and feedback from 5 AHS patient advisors (2 Korean and 3 Vietnamese). The iMD was run on an Android platform and delivered on a tablet.

Clinic Setting and Study Participant Eligibility

Patients were recruited from 3 primary care clinic sites at a federally qualified health center (FQHC) providing comprehensive health care to low-income, uninsured, and underinsured patients in Oakland, California. Participants included a convenience sample of Korean and Vietnamese men who were patients presenting for a PCP visit at a study clinic, were 18 to 75 years of age, spoke Korean or Vietnamese, and reported smoking at least 1 cigarette in the past 7 days. Reading literacy was not assessed nor required for participation.

Recruitment

Before launching the study and recruiting participants, clinic staff and providers were informed about the study at a clinic-wide staff meeting. Some video clips of the iMD intervention were shown at the meeting. Providers were told that the intervention would be provided to approximately 50 Kore-

an- and Vietnamese-speaking patients and the study implementation would aim not to interfere with the clinic workflow. The PCPs were asked to address the topic as they would in their usual practice. Research staff identified eligible patients with upcoming PCP appointments and contacted them, either by telephone before the day of the visit or in person at the visit, to provide a description of study involvement, confirm eligibility, and obtain informed consent. Enrollment took place from March 2014 to July 2015. Participants received \$10 for completing a postvisit survey and \$15 for completing a 3-month follow-up survey. No incentive was provided for completing a baseline assessment nor the intervention.

Intervention

At the intervention visit, just before engaging with the PCP and/or being measured for vital signs, research staff made the language selection on the iMD application and gave the participating patient a tablet computer on which to use the iMD application in a semiprivate waiting area or examination room. Research staff were available to provide technical assistance on the use of the program when needed. The iMD had 3 key components: (1) assessments, (2) tailored videos, and (3) a bilingual summary printout. The assessments on the tablet had audio options with read-aloud text and allowed patient users to respond interactively by using a touch screen. The videos delivered in-language messages tailored to a patient's individual responses to the assessment questions, which were captured and driven by branching logic within the iMD program. There were 28 video segments in total; the durations for the videos ranged from 8 to 65 seconds, averaging 29 seconds in length. Patients watched 14 to 22 video segments depending on their responses. At the end of the iMD session, the program printed a 1-page bilingual summary for the participant to share and discuss with his PCP during the visit immediately following the iMD session. Below, we provide a walk-through description of the iMD intervention.

The application started with an introductory video of a doctor introducing the iMD program and providing instructions on using the tablet. Guided by the 5As of the guidelines,¹⁴ Ask involved the smoking behavior assessments. Advise was delivered by a video with the doctor advising the patient to quit smoking, with a motivational en-

hancement message focusing on personal and family health. The video was followed by Assess, which involved the doctor asking the patient to use the touch screen to indicate his plan for quitting. Assist was tailored to the patient's readiness ("not thinking about quitting" vs "thinking about quitting or wanting to quit now or soon"). For example, for a patient who indicated "not thinking about quitting," he was asked to indicate the reasons for not thinking about quitting, and tailored videos addressing the selected reason(s) were then played. For patients who were "thinking about quitting," they were asked to indicate concern(s) related to quitting and were shown videos tailored to their concerns. The tailored videos discussed topics on various health effects from smoking (cancers, lung diseases, cardiovascular diseases, and second- and third-hand smoke), concerns related to stress and social pressures of smoking, and evidence-based resources for quitting (quitline and Food and Drug Administration-approved medications). The selection and contents of key video topics were based on patient and provider feedback during the intervention development phase. Arrange was delivered in a video, tailored to the user's readiness for quitting, which aimed to encourage the patient to follow-up with his PCP by discussing their tobacco use with a summary printout to be generated by the program. After the last video, a screen showed up asking the patient to inform the research staff that the program was finished. The research staff then selected the print or e-mail option on the program and obtained 2 identical copies of the summary printouts, 1 for the patient, and 1 for the patient's PCP. Research staff gave the printout to either the clinical staff or the PCP to be included in the patient's medical record. The summary printout aimed to provide actionable information to the PCP on the patient's current smoking status, readiness to quit, concerns about quitting, along with a list of recommendations (such as tailored cessation advice, referral to quitline, and descriptions of appropriate nicotine replacement therapies). A sample summary printout in bilingual English-Vietnamese is shown in Figure 1.

Data Collection

Data sources included (1) participant self-report via in-person or telephone survey assessments at baseline, postvisit, and 3-month follow-up with each taking 2 to 5 minutes to complete; (2) the EHR

Figure 1. Sample bilingual summary (English/Vietnamese) printout generated by the Interactive Mobile Doctor (iMD) intervention.

Patient's name/ID/Label	Date / Ngày: 2015-03-21 13:00:42
-------------------------	-------------------------------------

Doctor: Please check the appropriate box below to indicate your recommendations for this patient.

My Doctor Recommends that I Should / Bác Sĩ Của Tôi Khuyến Tôi Nên:

☐ Stop smoking
Bỏ hút thuốc lá

☐ Call the toll-free California Smokers Helpline
Gọi điện thoại miễn phí đến Trung Tâm Cai Thuốc Lá
1-800-778-8440 (Vietnamese / Tiếng Việt) 1-800-662-8887 (English / Tiếng Anh)

☐ Talk to AHS staff for smoking cessation counseling
Nói chuyện với nhân viên của AHS để được cố vấn cai thuốc lá.

☐ Use NRT / Dùng thuốc giúp cai hút thuốc:
☐ patch / miếng dán nicotine
☐ gum / kẹo gum nicotine
☐ lozenge / kẹo ngậm nicotine
☐ other RXs / thuốc có toa: _____

☐ Schedule the next visit with my doctor in _____ weeks
Làm hẹn gặp lại bác sĩ trong ____ tuần.

☐ Other / Điều khác: _____

<p>My Smoking History: Number of cigarettes smoked daily: 4 Number of years smoked: More than 20 years</p> <p>My Plan: Thinking about quitting</p> <p>My Concerns: I tried but can't quit.</p>	<p>Tình Trạng Hút Thuốc Của Tôi: Số điều thuốc hút hàng ngày: 4 Số năm đã hút thuốc: Hơn 20 năm</p> <p>Kế Hoạch Cai Thuốc Của Tôi: Đang nghĩ đến việc cai thuốc.</p> <p>Điều Quan Tâm Của Tôi: Tôi đã thử bỏ rồi nhưng không thể cai được.</p>
---	---

system; (3) iMD's programmed smoking behavior assessments; and 4) the research staff's observations of participant behaviors during iMD use. Most assessment items have been used in population-based surveys in tobacco use with Korean and Vietnamese Americans.^{11,19–21} New items assessing the acceptability of iMD were developed for the study to obtain feedback on video length, understandability, and perceived helpfulness of the intervention in deciding to quit smoking and in communicating with PCPs, which were reviewed by patient advisors during the intervention development phase.

Demographic and Health Characteristics

From EHR, age, marital status, years lived in the United States, and income as a percentage of the federal poverty level were obtained. Tobacco-related illnesses (hypertension, diabetes, chronic obstructive pulmonary disease, cardiovascular dis-

eases, stroke, asthma, acute bronchitis, or cancer) and behavioral health conditions (depression, anxiety disorders, sleep disorders, and alcohol abuse) were extracted from International Classification of Diseases, Ninth Revision codes documented in the EHR. Participants' education attainment and self-rated health were obtained from the baseline survey.

Baseline Smoking-Related Characteristics

From the baseline survey, participants indicated whether and by which method(s) they had attempted to quit smoking in the past 12 months. From iMD's digitized assessment, participants provided data on cigarettes smoked per day, years of regular use, time to first cigarette²² (within 5 minutes after waking, 6 to 30 minutes, 31 to 59 minutes, 60 minutes or longer after waking), intention

Table 1. Coding Definitions of 5As to Quantify Primary Care Providers' Delivery of 5As as Documented on Electronic Health Record Progress Notes

Code	Definitions	Progress Note Examples
Ask	Any statement mentioned about patient's use of tobacco or smoking status. Examples: diagnosis codes, smoking status updates, mentions of tobacco use.	<ul style="list-style-type: none"> • Tobacco abuse • Still smoking 5 to 6 cigarettes per day
Advise	Statements advising patient to quit or to reduce.	<ul style="list-style-type: none"> • Tobacco use: encouraged cessation
Access	Statements reflecting patient's readiness to quit; examples: patient's intent, motivation or effort at quitting.	<ul style="list-style-type: none"> • Trying to cut down • Precontemplative, does not want to set date, will try to decrease number of cigarettes for next visit by 1/2.
Assist	Statements addressing commitment to a method to achieve quitting (ordering, planning or provision of information relating to smoking cessation medications)	<ul style="list-style-type: none"> • Plan quit date 3/8/15. 800-778-8440 call smoker's helpline Vietnamese. Use Nicotine 21 mg/24 hr daily \times 6 weeks #42, then 14 mg/24 hr daily \times 6 weeks, then 7 mg/24 hr daily \times 6 weeks . . .
Arrange	Statements document specific plans for follow-up with a patient's effort to quit	<ul style="list-style-type: none"> • Tobacco smoking cessation discussed . . . He is to schedule a follow-up visit 2 to 3 months

to quit smoking in the next 6 months, and any 24-hour quit attempts in the past year.

Intervention Feasibility and Acceptability Outcomes

From research staff observations during iMD administration, feasibility data obtained were intervention duration (computed from start and end times), percentage of participants who needed technical assistance during program use, the kind of assistance needed, and percentage of participants who completed the entire iMD session before seeing their PCP. Intervention acceptability measures were obtained from the postvisit survey, which included satisfaction ratings on length of the iMD program ("too long," "just right," or "too short"), ease in understanding the video messages (from 1 = "too difficult to understand" to 4 = "quite easy to understand"), helpfulness in the decision to quit, and helpfulness in enhancing communication with the PCP (from 1 = "not at all helpful" to 4 = "very helpful").

Smoking-Related Outcomes

At the 3-month follow-up survey, participant self-reported smoking abstinence (time since participant last smoked), any 24-hour quit attempts, and quit methods attempted since the iMD session were assessed.

Patient-Provider Discussion on Tobacco Use Outcomes

From the postvisit survey, participants were asked to report whether tobacco use discussions with

their PCPs occurred during that visit (yes vs no) and to rate their satisfaction of patient-provider discussion on tobacco use (from 1 = "not at all satisfied" to 4 = "very satisfied").

From the EHR, PCP progress notes were extracted from 3 consecutive PCP visits of each participant: (1) 1 PCP visit before the iMD visit (pre-intervention); (2) at the intervention visit; and (3) 1 visit after (postintervention). Textual data were coded independently by 2 authors (TBD and JYT) using code definitions adapted from prior research,²³ and discrepancies were resolved via team discussions. The coding captured the absence or presence of each of the 5As at each progress note abstracted. Table 1 shows coding definitions and sample quotes.

Data Analysis

SPSS version 24.0 was used. Descriptive statistics, frequencies, percentages, means, and standard deviations were used to describe the study sample, feasibility and acceptability outcomes, and smoking cessation-related outcomes. To estimate the impact of iMD on the EHR-documented 5As, we conducted a separate multivariable logistic regression for each of the 5 binary outcomes (Ask, Advise, Assess, Assist, and Arrange) with a logit link. The generalized estimating equation (GEE) was used to account for PCP clusters and to estimate time effect by comparing each 5A outcome at the iMD visit and the postintervention visit with preintervention visit as the referent. Correlates that at-

tained P values $< .05$ in bivariate analyses in 1 of the 5A outcomes were included as covariates in the multivariable regression analyses. Age (recoded to <60 years of age vs $60+$), education (below high school vs high school or beyond), and cigarettes smoked per day (<10 vs $10+$) were included as a priori covariates. Statistical significance was assessed at the .05 level (2-sided).

Results

Participants

A list of 133 potential patients was identified from EHR. Ultimately, 47 participants enrolled and 42 participants completed a 3-month follow-up, yielding participation and retention rates of 87.0% and 89%, respectively. Figure 2 shows the participant flowchart.

Sample Characteristics

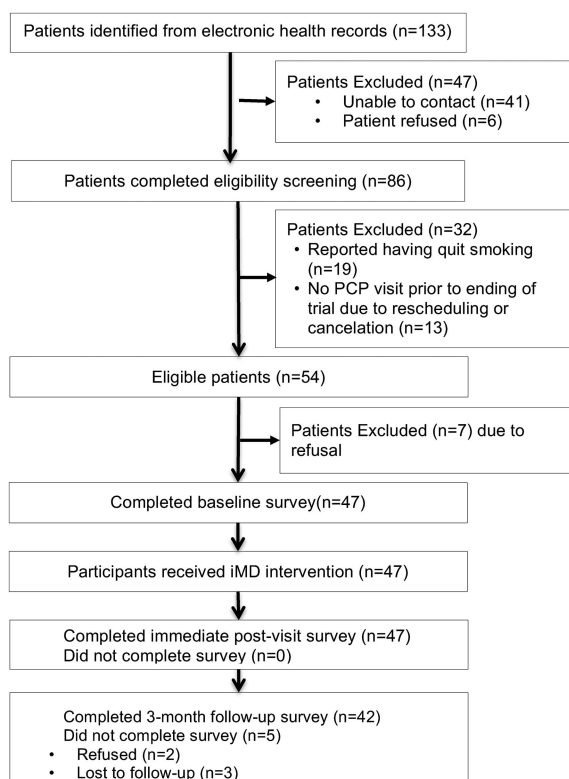
Table 2 shows the baseline characteristics of the 47 male participants who were between 28 and 71 years old (mean age, 56.4 years; SD, 9.9), including 68.1% that had at least 1 tobacco-related illness and 36.2% that had 1 or more diagnosed behavioral

health conditions. A majority (72.4%) smoked 10 or fewer cigarettes daily. At baseline, 53.2% indicated no plans to quit smoking in the next 6 months. Among those ($n = 28$) who attempted quitting in the past year, 25% used prescribed medications or over the counter nicotine replacement therapy (NRT) and 11% reported advice or counseling received from their health care provider but none reported the free quitline services available in Korean and Vietnamese languages (data not shown).

Intervention Feasibility and Acceptability

Table 3 shows the feasibility and acceptability outcomes. A majority (75%) of participants completed iMD within 13 minutes and ranged from 10 to 25 minutes. All but 2 (95.7%) completed the entire iMD session before seeing their providers. One third (36%) needed assistance, but most of the help was needed for answering the first couple of assessment questions when participants were unsure of how to advance or to clear the number entered on the keypad. At postvisit, a majority thought the length of the video program was “just right,” and the messages were easy to understand. Most found that iMD was “moderately” or “very” helpful both in deciding to quit and in enhancing the quality of communication with their PCP.

Figure 2. Participant flow diagram. PCP, primary care provider.



Self-Reported Smoking Cessation Outcomes at 3-Month Follow-Up

Quit Attempts

At 3 months, 78.7% reported having tried to quit smoking at least once; however, 51.1% (of all 47 participants) were able to quit for at least 24 hours since the iMD intervention visit. Of note, among 11 participants who reported having never tried to quit smoking at baseline, 7 reported making their first quit attempt lasting at least 24 hours since the iMD session.

Use of Evidence-Based Smoking Cessation Resources

Participants reported using various quitting resources: gradual reduction (73.0%), family support (40.5%), “cold turkey” (29.7%), provider advice (27.0%), medication (over the counter NRT or prescribed medicine, 27.0%), and e-cigarettes (13.5%). One participant (2.7%) reported using the quitline. Of the participants ($n = 5$) who reported using e-cigarettes to quit smoking, none achieved abstinence.

Table 2. Sample Characteristics at Baseline (N = 47)*

	Values [†]
Demographics	
Male	47 (100)
Ethnicity	
Vietnamese	29 (61.7)
Korean	18 (38.3)
Age, years	
<50	9 (19.1)
50 to 59	17 (36.2)
>60	21 (44.7)
Married	31 (66.0)
Lived in United States <15 years	17 (36.2)
Education	
< High school	21 (44.6)
Graduated high school or beyond	16 (55.3)
Income (% of federal poverty level)	
100% to 200%	24 (51.1)
<100%	11 (23.4)
Unknown	12 (25.5)
Health status	
Self-rated health	
Fair to poor	34 (72.3)
Tobacco-related diseases [‡]	
Hypertension	27 (57.4)
Diabetes	11 (23.4)
COPD	10 (21.3)
Others (CVD, stroke, or cancer)	6 (12.7)
Behavioral health conditions [‡]	
Depression	13 (27.7)
Anxiety disorders (including PTSD)	9 (19.1)
Others (alcohol use or sleep disorders)	5 (10.6)
Smoking status and history	
Number of cigarettes smoked per day, mean (SD)	9.3 (4.5)
Time to first cigarette after waking	
Within 30 minutes	33 (70.2)
>30 minutes	14 (29.8)
Years smoked regularly	
>10 years	3 (6.4)
11 to 20 years	3 (6.4)
>20 years	41 (87.2)
Intended to quit in the next 6 months	22 (46.8)
Had 24-hr quit attempt past year	18 (38.3)
Attempted to quit in the past year	28 (59.6)

COPD, chronic obstructive pulmonary disease; CVD, cardiovascular disease; PTSD, posttraumatic stress disorder; SD, standard deviation.

*Column percent for mutually exclusive categories may not be summed to 100% due to rounding.

[†]Values are n (%) except where indicated.

[‡]Participants may endorse one or more categories for tobacco-related diseases, and behavioral conditions.

Table 3. Feasibility and Acceptability Outcomes of Interactive Mobile Doctor Intervention (N = 47)*

	Values [†]
Feasibility Measures	
Length of iMD administration (minutes)	
Mean (SD)	12.9 (3.7)
Range	10 to 25
Needed staff assistance during administration	
No assistance needed	30 (63.8)
Once	17 (36.2)
More than once	0 (0.0)
Completion of iMD prior to seeing PCP	
Yes	45 (95.8)
No	2 (4.2)
Acceptability Measures	
Please tell us what you think of the length of the video intervention? Would you say the length was...	
Too long	0 (0.0)
Just right	46 (97.9)
Too short	1 (2.1)
What did you think of the messages from the videos? Were they...	
Too difficult to understand	0 (0.0)
Somewhat difficult to understand	1 (2.1)
Not too difficult to understand	6 (12.8)
Quite easy to understand	40 (85.1)
How helpful or not helpful do you think the video program was in your decision about quitting cigarettes?	
Not at all helpful	1 (2.1)
Somewhat helpful	5 (10.6)
Moderately helpful	13 (27.7)
Very helpful	28 (59.6)
In terms of enhancing the quality of the communications between you and your doctor in the clinic visit you just had, how helpful or not helpful do you think the video program was...	
Not at all helpful	1 (2.1)
Somewhat helpful	5 (10.6)
Moderately helpful	6 (12.8)
Very helpful	35 (74.5)

iMD, Interactive Mobile Doctor; PCP, primary care provider; SD, standard deviation.

*Feasibility data were obtained by research staff's observation. Acceptability data were obtained by participants' self-report from an in-person assessment immediately after the primary care visit after the iMD administration.

[†]Values are n (%) except where indicated.

Smoking Abstinence at 3 Months

Using intention-to-treat analysis, with missing data assumed to be nonabstinent, 19.1% of ($n = 9$) participants reported 7-day smoking abstinence and 10.6% ($n = 5$) reported 30-day point prevalence abstinence at 3 months.

Patient-Provider Discussions on Tobacco Use

Self-Reported Discussion with PCP on Tobacco Use

At the postvisit interview, 100% of patients reported discussing tobacco use with their PCP. Almost all (97.9%) were “somewhat” to “very” satisfied with the discussion with their PCP at their visit.

EHR-Documented 5A Delivery from PCP

A total of 141 EHR progress notes were abstracted from 3 consecutive PCP visits of all 47 patients. A majority (85%) of the participants saw the same PCP for 2 of the 3 visits, which provided progress note data. A total of 10 PCPs were involved in providing care for 1 to 10 participating patients in the study. Figure 3 shows the percent of progress notes documenting each of the 5As in the selected PCP visits. As part of Assist, 29.8% of the patients were prescribed or received recommendation for medications (NRT or bupropion) at the intervention visit compared with 4.3% and 0% at the visit before and after the intervention visit, respectively. Referrals to quitline or counseling services were noted for 19.1% of the patients at the intervention

visit, in contrast to 2.1% and 0% at pre- and postintervention visits, respectively.

Table 4 depicts the GEE results accounting for PCP clusters and including ethnicity, age, education, tobacco-related diseases, and cigarettes smoked per day as covariates. The intervention visit progress notes had significantly higher documentations for Assist and Arrange than both the pre- and postintervention visits ($P < .01$). Documentation of Assess was similar between intervention and postintervention visits, both of which were significantly higher than the preintervention visit. Ask and Advise, however, were similar across all 3 visits.

Discussion

A multilingual iMD intervention delivering 5As through tailored video messages on a mobile tablet while the patients were waiting to see a provider was feasible and acceptable among Korean- and Vietnamese-speaking male smokers in a FQHC setting. In addition, this intervention was highly acceptable among smokers in the study sample, as over half of the participants had no intent to quit smoking within the next 6 months. A large impact of EHR-documented 5As delivery, particularly on Assess, Assist, and Arrange, was observed at the iMD intervention visit when compared with the visit before or the visit following. Findings at 3-months postintervention showed promising self-reported quit attempts (51%) and an encouraging 7-day point prevalent smoking abstinent rate (19%). Although there have been ample clinical

Figure 3. Documented primary care providers' delivery of the 5As (Ask, Advise, Assess, Assist, and Arrange) to 47 study participants across 3 consecutive primary care visits at preintervention, intervention, and postintervention based on 141 progress notes extracted from electronic health records.

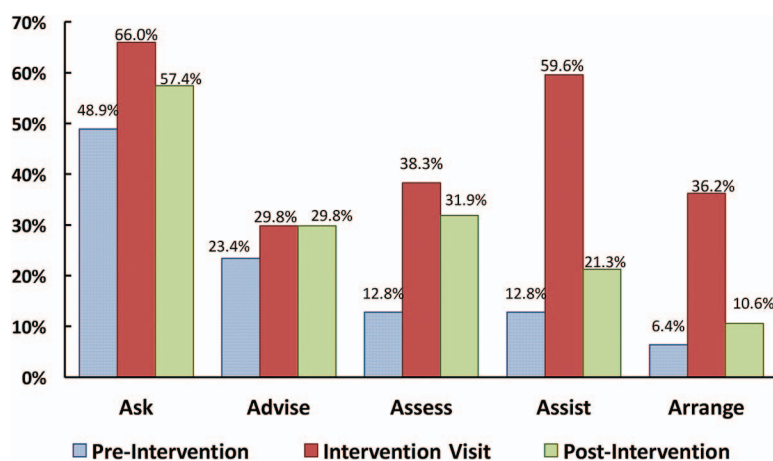


Table 4. Multivariable Logistic Model Results for Electronic Health Record-Documented Outcomes*

EHR-Documented Outcomes	Time Points†	
	Intervention Visit AOR (95% CI), P Value	Postintervention Visit AOR (95% CI), P Value
Ask	2.26 (0.94–5.46), .07	1.49 (0.62–3.57), .37
Advise	1.44 (0.66–3.13), .36	1.44 (0.54–3.79), .47
Assess	4.49 (1.62–12.49), .004	3.34 (1.32–8.44), .01
Assist	17.63 (4.67–66.57), <.001	2.02 (0.54–7.56), .30
Arrange	10.28 (2.92–36.23), <.001	1.80 (0.44–7.39), .42

AOR, adjusted odds ratio; EHR, electronic health record; 95% CI, 95% Confidence Interval.

*All models used generalized estimating equations (GEE) to adjust PCP clusters. Multivariable logistic regression models included the following as covariates: ethnicity (Korean vs. Vietnamese), age (<60 vs 60 or older), education (<high school vs. high school or beyond), presence vs. absence of a tobacco-related disease condition (hypertension, diabetes, chronic obstructive pulmonary disease, cardiovascular diseases, stroke, or cancer), and number of cigarettes smoked per day (<10 vs 10 or more). Bold text denotes significant AOR, 95% CI, and *P*-value (*P* < 0.05).

†Referent is preintervention visit. Three time points were included in this study: (1) at preintervention, one primary care (PCP) visit prior to the intervention; (2) intervention visit with participants receiving the interactive Mobile Doctor (iMD) intervention; and (3) at postintervention, one PCP visit after the intervention visit.

trials that promote smoking cessation or providers delivering 5As in clinic settings,²⁴ this is the first study to our knowledge that specifically targeted non-English speaking Asian American smokers in primary care.

Tobacco addiction is a chronic disease that often requires repeated interventions. The US Public Health Service's Clinical Practice Guidelines for Treating Tobacco Use and Dependence recommends delivering the 5As at every encounter with a smoker.¹⁴ However, its implementation remains inconsistent and less known among LEP Asian American smokers, despite smoking prevalence being disproportionately higher in these population groups. This pilot study showed that the iMD intervention was able to engage Korean- and Vietnamese-speaking patients using an interactive video education with a written summary right before a primary care clinical encounter. The finding that 100% of the patients reported having a discussion with their provider immediately following iMD administration is encouraging, particularly because over half of the sample had no intention to quit smoking within 6 months or was not ready to quit smoking. This rate is quite remarkable when compared with self-reported 5As receipt rates from smoking patients in some primary care settings: Ask (50%–80%), Advise (27%–77%), Assess (41%–63%), Assist (41%–56%), and Arrange (10%–22%).^{25–27} Similarly, the iMD administration seems to yield more favorable results in comparison with California statewide data, which suggest that

only 54% Korean and 64% Vietnamese smokers received provider advice in the past 12 months.²⁸

The multivariable logistic regression results showed that the intervention visits with iMD administration had particularly higher rates of EHR-documented 5As deliveries, especially in assessing patients' readiness for quitting, assisting patients with quitting, and arranging for follow-ups, when compared with other PCP visits without iMD administration. Findings suggested that iMD was associated with increased odds of 4 to 17 times for EHR-documentation of Assess, Assist, and Arrange, when compared with visits without iMD. Research has shown that patients' self-reported receipt of Assist and Arrange was associated with quitting smoking.²⁷ The increase in Assess, Assist, and Arrange at the iMD intervention visit might be associated with the promising smoking cessation outcomes observed in medication use (27%), making quit attempts (51%), and 7-day abstinence (19%) at follow-up. On the other hand, despite that 19% of the progress notes included a referral to quitline, none of the patients reported using this service. This finding is consistent with research showing increased patients' quitline enrollment using an Ask-Advise-Connect approach with proactive calls from quitline counselors to referred patients when compared with a written referral (7.8% vs 0.6%).²⁹

Despite the encouraging results observed in EHR-documented 5As delivery in association with the iMD intervention, the impacts of iMD seem to

be limited to the visit when patient received iMD before the clinical encounter. Among the increased documentations of the 3As (Assess, Assist, and Arrange) observed from preintervention to intervention, the increase in Assess was the only A that was maintained at postintervention. The failure of maintaining the treatment effect on Assist and Arrange is not fully understood from the study data. The literature to date has provided limited understanding of the factors affecting the delivery of Assist and Arrange. One study found that patients with cardiovascular conditions were more likely to report receipt of Assist and Arrange by patients' self-report.²⁶ Another study based on EHR-documented 5As reported that older age was associated with Assist documentation; however, no meaningful analysis could be further conducted on Arrange delivery due to so few Arrange documented (2% out of 1200 progress notes reviewed).²³ Both age and comorbid health conditions were adjusted in our multivariable analyses (Table 4). In a separate study that involved reviewing EHR progress notes of 106 smoking participants, including the 47 participants in this study sample and additional patients enrolled in another smoking trial at preintervention, we found that patients who were assessed as unmotivated to quit were less likely to have Assist documented.³⁰ One plausible explanation for the decreased documentation of Assist and Arrange from intervention to postintervention could be that many more of the patients were unmotivated to quit smoking at postintervention without the iMD intervention. We reviewed the EHR progress note contents related to patients' readiness for quitting and found that more patients were assessed as "not ready, precontemplative, or not motivated" at the visits without the iMD intervention: 67% at pre- and 78% at postintervention visits without iMD, and 39% at the intervention visit with iMD administered. Similarly, for Arrange, we observed that 88% of those patients that had Arrange documented at the intervention visit also had Assist documented. Thus, the decrease from intervention to postintervention in Arrange could be due to a large decrease in Assist, and fewer patients were reported as ready for quitting at the postintervention visit. A prior randomized control trial found that a repeated administration of a Video Doctor intervention delivering tailored video messages plus provider cueing at 2 consecutive visits in prenatal settings significantly increased the odds of

patients reporting assistance received at both encounters.³¹ Thus, to achieve the recommendations of delivering 5As at every clinical encounter, it will likely require repeated administration of the iMD or interventions targeting both patients for motivation enhancement and providers for reminders to facilitate 5A delivery at each encounter.

To address tobacco use, health information technology-based interventions are being tested in primary care settings. For example, a pilot study testing "FAST-Feedback" that provided guideline-based feedback to both patients and providers on a range self-reported health behaviors showed increased discussions on mental health but no difference in smoking-related discussions.²⁴ In addition, a text-based computer-facilitated 5A intervention is being tested among English- and Spanish-speaking primary care patients.³² A unique feature of the iMD intervention is that it uses tailored and interactive videos with education contents delivered in languages (Korean and Vietnamese) and images tailored to the Asian culture. Our preliminary findings showed that more than 90% of Korean- and Vietnamese-speaking patients indicated the iMD messages were easy or not difficult to understand and were helpful in their decision to quit smoking and communication with their PCP.

Limitations

This is a pilot feasibility study and has several limitations. This study used a single-group pre-post intervention design, without a control condition. The efficacy of the iMD intervention remains to be further tested in randomized controlled trials. Most of the outcomes, including patient-provider discussion of tobacco use and smoking cessation outcomes, were assessed by patient self-report, which might be subject to recall or other biases. EHR notes were the source for providers' delivery of 5As during the clinical encounter. These notes are subject to individual writing styles and time factors and may present selection bias in reporting. In addition, PCPs were aware of the study implementation, and by receiving the summary printout, they were reminded that their patients were enrolled in the study and, thus, the EHR-documented 5A outcomes could be biased. Nonetheless, the EHR data enabled longitudinal observational comparisons on EHR-documentation of the 5As by PCPs in visit notes at visits before, with, and after the iMD intervention. The small sample size of this pilot

also resulted in some wide 95% confidence intervals. Nonetheless, the use of the GEE models enabled comparisons of the observed data across time, with PCP clusters and other covariates accounted for in the models. The odds ratio estimates should be considered with caution. The results supported the difference in the EHR-documented 5As between the intervention visit and other visits for the same patients and most with the same providers. Lastly, the study was conducted among Korean and Vietnamese smoking patients in a FQHC setting, which is not generalizable to other Asian or primary care patients in other primary care settings.

Conclusion

The iMD intervention within a clinic setting is feasible and acceptable to Korean and Vietnamese smoking patients, including those who were unmotivated to quit smoking. This intervention is promising to increase patient-provider discussions of tobacco use among Asian American immigrants. Future studies should examine and identify strategies to address health care system and cultural challenges that may impact the uptake of iMD if this intervention is found efficacious. The preliminary findings warrant a larger scale of randomized controlled trials to test the efficacy of the iMD intervention. Based on these findings, our research team is currently conducting a randomized controlled trial with the iMD intervention expanded to include English, Cantonese (Chinese), Korean, and Vietnamese, with a 6-month follow-up and biochemical verification using salivary cotinine for smoking abstinence (ClinicalTrials.gov identifier, NCT02966132).

The authors would like to express their gratitude to the AHS Korean and Vietnamese patient advisory councils for serving as the study's patient advisors, and the AHS patients who participated in focus group interviews, usability testing sessions or the pilot study, as well as AHS clinical staff and providers for their support during study implementation. We would like to acknowledge Ky Vo who performed software development of the iMD mobile application; Hy Lam for filming and video editing; Drs. Mychi Nguyen, Suzy Lim, Ricky Choi, and Arthur Chen for intervention development; Isabel Nguyen for commenting on the initial draft of the manuscript; and the following individuals for their assistance in patient recruitment, translation and data collection: Jinyoung Chun, Terrence Park, Susan Yoon, and Jen Lee. Lastly, we would like to thank the University of California San Francisco Vietnamese Community Health Promotion Project's Community Advisory Board for providing feedback at each phase of the project.

To see this article online, please go to: <http://jabfm.org/content/31/6/869.full>.

References

1. Hoeffel EM, Rastogi S, Kim MO, Shahid H. The Asian population: 2010. In: U.S. Department of Commerce EaSA, editor. 2010 Census Briefs. Washington, DC: U.S. Census Bureau; 2012.
2. California Health Interview Survey. 2011–12 CHIS Adult Survey (AskCHIS). Los Angeles CA: UCLA Center for Health Policy Research; 2013.
3. Li S, Kwon SC, Weerasingh I, Rey MJ, Trinh-Shevrin C. Smoking among Asian Americans: acculturation and gender in the context of tobacco control policies in New York City. *Health Promot Pract* 2013;14:18S-28S.
4. Mukherjee A, Wackowski OA, Lee YO, Delnevo CD. Asian American, Native Hawaiian and Pacific Islander tobacco use patterns. *Am J Health Behav* 2014;38:362–9.
5. California Health Interview Survey. CHIS Adult Survey (AskCHIS) [online interactive database]. Los Angeles CA: UCLA Center for Health Policy Research; 2016.
6. Zhang JY, Chan SS, Fong DY, Malone RE, Lam TH. The social context of smoking cessation in China: an exploratory interview study. *Tob Control* 2012;21:57–8.
7. Kim SS, Nguyen HL, Le TH. Culture and smoking among Vietnamese Americans in central Massachusetts. *J Transcult Nurs* 2012;23:151–8.
8. Zhang J, Wang Z. Factors associated with smoking in Asian American adults: a systematic review. *Nicotine Tob Res* 2008;10:791–801.
9. Wheaton AG, Ford ES, Thompson WW, Greenland KJ, Presley-Cantrell LR, Croft JB. Pulmonary function, chronic respiratory symptoms, and health-related quality of life among adults in the United States—National Health and Nutrition Examination Survey 2007–2010. *BMC Public Health* 2013;13:854.
10. Spigner C, Yip MP, Huang B, Tu SP. Chinese and Vietnamese adult male smokers' perspectives regarding facilitators of tobacco cessation behavior. *Asian Pac J Cancer Prev* 2007;8:429–35.
11. Tsoh JY, Tong EK, Gildengorin G, et al. Individual and family factors associated with intention to quit among male Vietnamese American smokers: implications for intervention development. *Addict Behav* 2011;36:294–301.
12. Kuiper N, Zhang L, Lee J, et al. A national Asian-language smokers' quitline—United States, 2012–2014. *Prev Chronic Dis* 2015;12:E99.
13. Tsoh JY, Burke NJ, Gildengorin G, et al. A social network family-focused intervention to promote smoking cessation in Chinese and Vietnamese American male smokers: a feasibility study. *Nicotine Tob Res* 2015;17:1029–38.

14. Fiore MC, Jaen CR, Baker T, et al. Treating tobacco use and dependence: 2008 update. Clinical practice guideline. Rockville, MD: U.S. Department of Health and Human Services. Public Health Service; 2008.
15. Stead LF, Buitrago D, Preciado N, Sanchez G, Hartmann-Boyce J, Lancaster T. Physician advice for smoking cessation. *Cochrane Database Syst Rev* 2013;5:CD000165.
16. Agaku IT, Ayo-Yusuf OA, Vardavas CI. A comparison of cessation counseling received by current smokers at US dentist and physician offices during 2010–2011. *Am J Public Health* 2014;104:e67–75.
17. Nugent C, Schoenborn C, Vahratian A. Discussions between health care providers and their patients who smoke cigarettes. Hyattsville, MD: National Center for Health Statistics; 2014.
18. Duong T, Chun J, Wong C, et al. Identifying themes for effective smoking cessation messaging to Vietnamese and Korean immigrant patients. Poster presented at the 2014 Society for Research on Nicotine and Tobacco 20th annual meeting, Seattle, WA; 2014, February.
19. Carr K, Beers M, Kassebaum T, Chen MS, Jr. California Korean American Tobacco Use Survey—2004. Sacramento CA: California Department of Health Services; 2005.
20. Tong EK, Gildengorin G, Nguyen T, et al. Smoking prevalence and factors associated with smoking status among Vietnamese in California. *Nicotine Tob Res* 2010;12:613–21.
21. California Health Interview Survey. CHIS 2011–2012 adult questionnaire version 10.3 March 24, 2014: adult respondents age 18 and older. Los Angeles, CA: Regents of the University of California; 2014. Available at: http://healthpolicy.ucla.edu/chis/design/Documents/_CHIS2011adultquestionnaireV24mar14.pdf
22. Baker TB, Piper ME, McCarthy DE, et al. Time to first cigarette in the morning as an index of ability to quit smoking: implications for nicotine dependence. *Nicotine Tob Res* 2007;9:S555–70.
23. Williams RJ, Masica AL, McBurnie MA, et al. Documentation of the 5 As for smoking cessation by PCPs across distinct health systems. *Am J Manag Care* 2014;20:e35–42.
24. Hess R, Tindle H, Conroy MB, Clark S, Yablonsky E, Hays RD. A randomized controlled pilot trial of the functional assessment screening tablet to engage patients at the point of care. *J Gen Intern Med* 2014;29:1641–9.
25. Quinn VP, Hollis JF, Smith KS, et al. Effectiveness of the 5-As tobacco cessation treatments in nine HMOs. *J Gen Intern Med* 2009;24:149–54.
26. Vijayaraghavan M, Yuan P, Gregorich S, et al. Disparities in receipt of 5As for smoking cessation in diverse primary care and HIV clinics. *Prev Med Rep* 2017;6:80–7.
27. Park ER, Gareen IF, Japuntich S, et al. Primary care provider-delivered smoking cessation interventions and smoking cessation among participants in the National Lung Screening Trial. *JAMA Intern Med* 2015;175:1509–16.
28. Tong EK, Tang H, Chen MS, Jr., McPhee SJ. Provider smoking cessation advice among California Asian-American smokers. *Am J Health Promot* 2011;25:S70–4.
29. Vidrine JI, Shete S, Cao Y, et al. Ask-Advise-Connect: a new approach to smoking treatment delivery in health care settings. *JAMA Intern Med* 2013;173:458–64.
30. Nguyen I, Nguyen KHT, Nguyen T, Lee G, Quach T, Tsoh JY. Documentation of assistance provided by primary care providers to support smoking cessation among Asian American patients. *Ann Behav Med* 2018;52:S376.
31. Tsoh JY, Kohn MA, Gerbert B. Promoting smoking cessation in pregnancy with Video Doctor plus provider cueing: a randomized trial. *Acta Obstet Gynecol Scand* 2010;89:515–23.
32. Kalkhoran S, Appelle NA, Napoles AM, et al. Beyond the Ask and Advise: implementation of a computer tablet intervention to enhance provider adherence to the 5As for smoking cessation. *J Subst Abuse Treat* 2016;60:91–100.