

ORIGINAL RESEARCH

Screenings during Well-Child Visits in Primary Care: A Quality Improvement Study

Toshiaki Wakai, MD, Madeline Simasek, MD, Urara Nakagawa, MD, Masaji Saijo, MD, and Michael D. Fetters, MD, MPH, MA

Background: Early Periodic Screening, Diagnosis, and Treatment visits are designed to address physical, mental, and developmental health of children enrolled in Medicaid.

Methods: We conducted a mixed methods intervention by using a quality improvement theory. We assessed preintervention and postintervention screening rates of development, anemia, lead, oral health, vision and hearing, interventions for improvement, and barriers for the well-child visits at an academic family medicine clinic. For quantitative analysis, we assessed the preintervention baseline for 183 children and postintervention outcome for 151 children. For qualitative analysis, we used group interviews and key informant interviews to develop interventions in the preintervention stage and to explore potential barriers for further improvement in the postintervention stage.

Results: Interventions based on baseline results included user-friendly materials, checklists, posters, education, and order sets. After the intervention, there were significant statistical improvements ($P < .05$) for the anemia test ordered rate, serum lead test ordered rate, oral health screening and referral rates, and ordered and confirmed test rates for both vision and hearing. Despite these improvements, 3 qualitative findings indicated barriers for further improvement, including difficulties in venipuncture, medical assistant aversion to vision screening, and poor fit of equipment for hearing assessment. The procedures prompted further continuous quality improvement activities using fingerstick hemoglobin testing, a child-friendly vision screener, and manual audiometer with headphones.

Conclusions: The trial findings demonstrated potential benefits of improving screenings in an office-based intervention by using a quality improvement process. Postintervention qualitative findings illustrate additional factors that could be addressed for further improvements. (J Am Board Fam Med 2018; 31:558–569.)

Keywords: Child, Family Medicine, Physical Examination, Quality Improvement

The American Academy of Pediatrics (AAP) and Bright Futures recommend preventive pediatric health care with an awareness that needs are highest among children from low socioeconomic groups.^{1,2} Early Periodic Screening, Diagnosis, and Treatment (EPSDT), a component of Medicaid,

was implemented to improve the health of children who would otherwise be underserved.^{3–5} Based on AAP and Bright Futures recommendations, EPSDT seeks to address the physical, mental, and developmental health needs of children. However, Levinson⁶ reported that approximately 76% of children did not receive screening in one or more of the required EPSDT domains.

The US Preventive Services Task Force (USPSTF) has concluded that there is insufficient evidence to recommend for or against using routine screenings of development, anemia, lead, oral health, or hearing for children in primary care, although vision screening is recommended (Recommendation B).^{7–14} Each recommendation is illustrated in Table 1. Furthermore, AAP/Bright Futures and other studies have provided rationales for

This article was externally peer reviewed.

Submitted 5 June 2017; revised 22 December 2017; accepted 6 January 2018.

From Department of Family Medicine, University of Michigan, Ann Arbor, MI (TW, MDF); Children's Hospital of Pittsburgh of University of Pittsburgh Medical Center, University of Pittsburgh Medical Center Shadyside, PA (MS); Sapporo Tokushu-kai Hospital, Sapporo, Japan (UN, MS).

Funding: none.

Conflict of interest: none declared.

Corresponding author: Toshiaki Wakai, MD, 300 North Ingalls Street, NI4C06, Ann Arbor, MI 48109 (E-mail: toshiakw@med.umich.edu).

Table 1. The US Preventive Services Task Force Recommendations and Rationales

Screenings	USPSTF recommendations	Rationales
Development	Inadequate evidence on the effectiveness of interventions, the accuracy of surveillance and screening instruments for speech and language delay. ⁷	Early detection can lead to early intervention and improved outcomes, and PEDS form shown to be acceptable for use in primary care. ¹⁵
Anemia	Inadequate evidence on the effect of routine screening for iron deficiency anemia in asymptomatic children aged 6 to 24 months on growth or child cognitive, psychomotor, or neurodevelopmental outcomes. ^{8,9}	Iron deficiency anemia is associated with psychomotor and cognitive abnormalities in children, and it continues to be the highest among children from minority and poor backgrounds. ¹⁶
Lead	Good-quality evidence that interventions do not result in sustained decreases in blood lead levels ¹⁰	There is evidence that 25% of children live in housing with deteriorated lead-based paint and are at risk of lead exposure that can result in cognitive impairment and other sequelae. ¹⁷
Oral Health	Insufficient evidence to assess the balance of benefits and harms of routine screening for dental caries performed by primary care clinicians in children aged 0 to 5 years. ^{11,12}	The prevalence of untreated dental caries at ages 2 to 5 years is almost 20% and early professional dental care complemented by risk assessment, anticipatory guidance, and periodic supervision can provide time-critical opportunities to reduce the risk of preventable dental or oral disease in children. ^{18,19}
Vision	Recommended for all children at least once between the ages of 3 and 5 years (B recommendation); high certainty of a moderate net benefit and moderate certainty of a moderate-to-substantial net benefit. ¹³	Amblyopia prevalence in the United States is 1% to 4%, but on using available vision screening tests, early detection can prevent visual loss by ensuring effective interventions are given earlier. No obvious harms associated with vision screening were noted. ¹³
Hearing	Not published on hearing screening in infants and children. One study raises doubts about the usefulness of preschool hearing screening program in child care centers. ¹⁴	Failure to detect congenital or acquired hearing loss in childhood may result in lifelong deficits in speech and language acquisition, poor academic performance, social maladjustment, and emotional difficulties. ²⁰

USPSTF, US Preventive Services Task Force; PEDS, Parent's Evaluation of Developmental Status.

these screening items, which are also illustrated in Table 1.^{15–20}

Despite the value of these services, most practices fall short on delivering these services to the population with need. For example, several states have reported low blood lead screening rates for children enrolled in Medicaid. One of the reasons is that in developing their managed-care contracts, states decide whether to permit health care providers to refer Medicaid-enrolled children to off-site laboratories to have their blood drawn, a practice that imposes an additional burden on families and lowers screening rates.²¹

Previous investigators have attempted to improve the delivery of well-child screenings. Van Cleave et al.²² reviewed 23 articles to synthesize evidence for interventions to improve such screening in primary care settings. Of the 23 articles, 5 were based on randomized controlled trials and 18 were based on observational studies. In the systematic review, screening tests, such as developmental delay, mental health conditions, vision problems,

hearing problems, lead poisoning and anemia, were selected based on recommendations from AAP/Bright Futures, the USPSTF, and the Centers for Disease Control and Prevention.²²

Given the compelling rationale for conducting a battery of routine well-child screenings in the primary care setting, we sought to evaluate the efficacy of baseline screening delivery in our practice, qualitatively develop an intervention and use it to measure the impact, and to conduct a postintervention qualitative assessment to identify areas potential for further improvement.

Methods

Design

We utilized a mixed methods intervention design using quality improvement theory. This involved baseline, preintervention quantitative assessments of performance on the study measures, subsequent preintervention qualitative assessments to refine the intervention, an intervention to assess the im-

provement of screening rates in well-child visits, a postintervention quantitative assessment of the results, and a subsequent postintervention qualitative assessment to explain the study results and to explore potential barriers for further improvement (Figure 1).^{23,24}

For the analysis of group interviews and key informant interviews as a part of the preintervention and postintervention qualitative assessments, we used the immersion/crystallization style, which involved repeated reading of all data to reflect on the analysis until a meaningful interpretation relative to the patterns and themes emerged.²⁵ The study was conducted at a single study site at the University of Pittsburgh Medical Center (UPMC) Shadyside Family Health Center (FHC) from September 1, 2009, to January 9, 2011. The quality

improvement process was designed using the Find process, Organize team, Clarify knowledge, Understand variation, Select improvement (FOCUS)–Plan, Do, Study, Act (PDSA) theoretical model.²⁶ The procedures of data collection and analysis are illustrated in Table 2.^{24,27} This study was reviewed by the UPMC Institutional Review Board and designated as “exempt” under section 45 CFR 46.101(b) (No. PRO16110549).⁴

Setting

UPMC Shadyside FHC provides health care services for underserved patients eligible for Medicaid. Pennsylvania state requires EPSDT screenings to be performed for all children in receipt of Medicaid, and the program’s periodicity schedule and

Figure 1. Procedural diagram of the mixed methods interventional design using quality improvement theory.

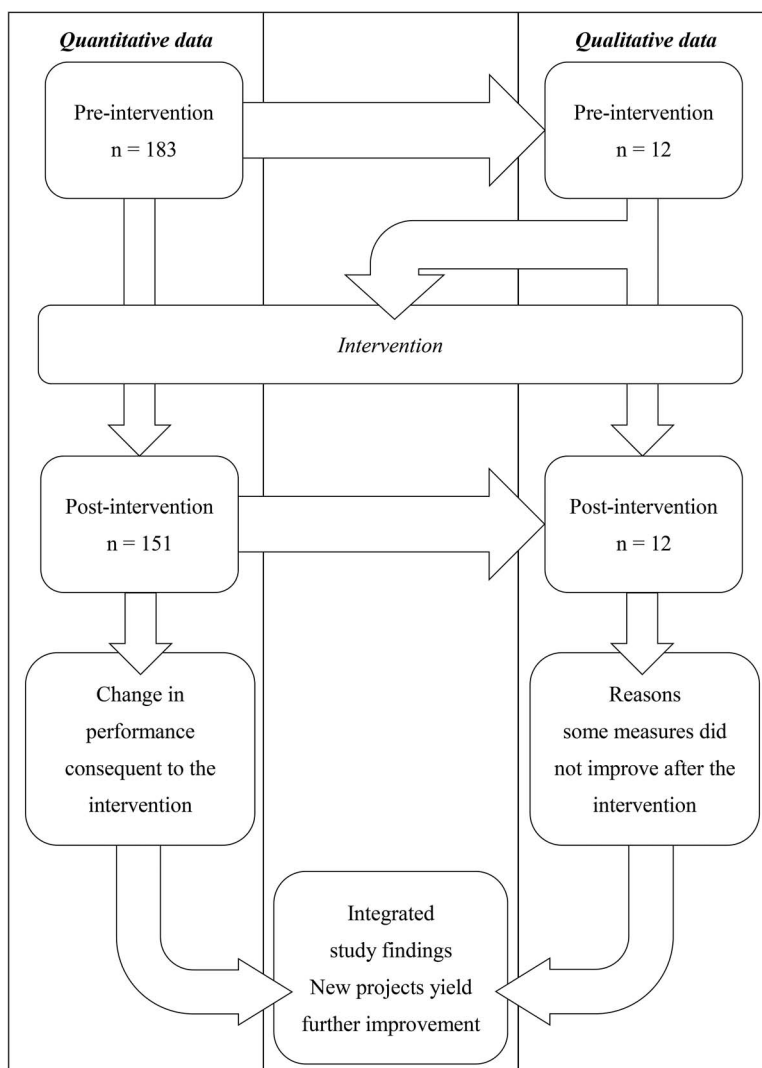


Table 2. Comparison of Quantitative and Qualitative Purpose, Sampling Procedures, Data Collection, and Data Management

		Quantitative	Qualitative
Purpose		To reveal the statistical differences before and after an intervention to affect the rates	Preintervention: to design interventions Postintervention: to explain the outcomes and identify further barriers
Sampling procedures	Participants	Children aged 0 to 6 years receiving Medicaid	LOPIR members, FHC staff
	Site	UPMC Shadyside FHC	
	Sample size	Preintervention = 183; Postintervention = 151	Preintervention and postintervention = 12 (9 physicians including 6 residents and 3 attending physicians, 2 nurses and 1 administrative manager)
	Intent of sampling	Probabilistic (all patients available during the period)	Purposeful (Part of the LOPIR project)
Data collection	Type of data	Retrospective data collection (Chart reviews)	Open-ended with 22 group interviews and 3 key informant interviews as part of the LOPIR process
Data management	Recording methods	Data were extracted from EHRs and uploaded into the R software	Field notes and observations recorded by handwritten notes

LOPIR, Longitudinal outpatient practice improvement rotation; UPMC, University of Pittsburgh Medical Center; FHC, Family Health Center; EHRs, electronic health records.

coding matrix requires comprehensive services to be implemented.²⁸

Study Population

All children aged 0 to 6 years in receipt of Medicaid who attended well-child visits were eligible to participate. We excluded children at the time of chart review if they had attended for illness that mistakenly had been input as an EPSDT well-child visit. Preintervention and postintervention qualitative assessments were conducted by the FHC physicians and the office staff.

Data Collection Instruments

A list of all EPSDT well-child visits for children aged 0 to 6 years was requested from the administrative staff of UPMC Shadyside FHC. We reviewed the following 6 required screening services: development, anemia, serum lead, oral health, vision, and hearing. We categorized each age-group by using the EPSDT age ranges and constructed chart review forms by age and screening item (Table 3).²⁹ We then collected data from electronic health records (EHRs). Inclusion criteria of each screening item was based on EPSDT, AAP, and Bright Futures guidelines.

Based on AAP/Bright Futures, EPSDT, and UPMC Shadyside FHC policy as illustrated in Table 4, we reviewed and evaluated the screenings of following screening instruments and age ranges: (1) for development screening, the number of completed Parents' Evaluation of Developmental Status forms for documentation that were performed at all age ranges; (2) for anemia screening, the number of serum hemoglobin and hematocrit measurements ordered and attempted, as well as those confirmed, at ages of 12 and 24 months; (3) for lead screening, the number of lead measurements performed or attempted as documented in laboratory results of EHRs at ages of 12 and 24 months or before the age of 6 years; (4) for oral health screening, the number of times oral health risk assessment was documented, referral to a "dental home" provider, or documentation that a child was already receiving dental care at ages of 12, 18, 24, and 30 months, and an annual referral to a dentist or documentation that the child was already receiving dental care from the age of 3 years; (5) for vision screening, the number of vision screening tests ordered, the results documented, or the documentation of an attempt by a physician or nurse, annually from the age of 3 years; and (6) for hearing screen-

Table 3. Corresponding Distribution of Participants from Chart Reviews in Early Periodic Screening, Diagnosis, and Treatment Well-child Visits

EPSDT age	Preintervention		Postintervention	
	No.	%	No.	%
0 to 11 months	52	28	57	38
12 months	8	4.4	11	7.3
15 months	7	3.8	3	2.0
18 months	13	7.1	10	6.6
24 months	14	7.7	8	5.3
30 months	6	3.3	10	6.6
3 years	14	7.7	13	8.6
4 years	38	21	20	13
5 years	12	6.6	6	3.9
6 years	19	10.4	12	7.9
Total	183		151	

EPSDT, Early Periodic Screening, Diagnosis, and Treatment

ing, the number of hearing tests ordered, the results documented, or the documentation of an attempt by a physician or nurse, annually from the age of 3 years.¹⁻³

Data Collection

For the preintervention quantitative assessment to establish a baseline and to design interventions, we first conducted a retrospective review of charts of 183 patients from September 1, 2009, to March 23, 2010. For the postintervention quantitative assessment to explain the outcomes and identify further barriers, we conducted a retrospective review of charts of 151 patients from September 21, 2010, to January 9, 2011 (Table 2). As a part of the prein-

tervention and postintervention qualitative assessments, group interviews and key informant interviews were conducted. The group interview comprised 6 residents and 3 attending physicians; the group was called the longitudinal outpatient practice improvement rotation (LOPIR) group, which was a part of a progressive curriculum developed at UPMC Shadyside in 2004 to teach residents leadership skills in a specific method of clinical practice improvement.³⁰ Key informant interviews were conducted with 2 nurses and 1 administrative manager who was responsible for data collection.³¹ The chart reviews were conducted manually by the 9 participating physicians

Table 4. Required Screenings by Early Periodic Screening, Diagnosis, and Treatment, American Academy of Pediatrics/Bright Future, and University of Pittsburgh Medical Center Shadyside Family Health Center

Screenings	AAP/Bright Future	EPSDT	UPMC Shadyside FHC
Development	At ages of 9 to 11, 18, and 30 months		At all age ranges (every well-child visit)
Anemia	At ages of 9 to 11 months or 12 months if missed at 9 to 11 months		At ages of 12 and 24 months
Lead	At ages of 9 to 11 and 24 months, or before 6 years if not previously done		At ages of 12 and 24 months, or before 6 years if not previously done
Oral Health	Oral health risk assessment	At ages of 6, 9, 12, 18, 24, and 30 months	At ages of 12, 18, 24, and 30 months
	Referral to dentist	Annually from the age of 3 years	
	Vision	Annually from age 3 years	At ages 3, 4, 5, 6, 8, and 10 years, and once each during early, middle, and late adolescence
	Hearing	Newborn period and at ages of 4, 5, 6, 8, and 10 years	Newborn period and annually from the age of 3 years

EPSDT, Early Periodic Screening, Diagnosis, and Treatment; AAP, American Academy of Pediatrics; UPMC, University of Pittsburgh Medical Center; FHC, Family Health Center

of the LOPIR group based on the EPSDT age range.

Preintervention Qualitative Assessment

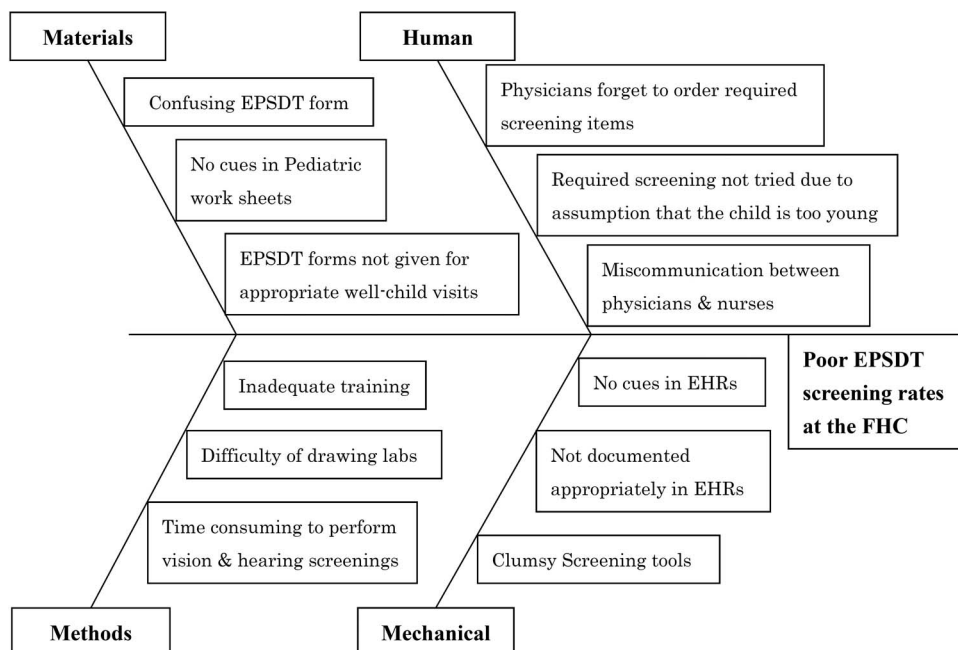
With regard to preintervention qualitative assessment, after collecting preintervention quantitative data, the following open-ended clinical questions in the interview guide were discussed in group interviews (n = 22) and key informant interviews (n = 3): “What are the barriers to compliance with current screening requirements?”, “Describe any experience when you missed ordering required screenings,” and “What difficulties do you experience during well child care visits?” These qualitative data were supplemented with field notes and observations, which were recorded by handwritten notes; these notes and observations provided context for interpreting the interview data. Some potential barriers identified in group interviews included “Physicians or nurses may not know the requirements of EPSDT screenings” and “EPSDT forms are not given appropriately for well-child visits.” We also discussed, in key informant interviews, potential barriers from the perspectives of nurses, and typical comments included, “Required screenings may not be tried due to an assumption that the child is too young to complete the test,”

and “There may exist miscommunication between physicians and nurses.”

Preintervention Qualitative Data Analysis

Preintervention qualitative data were analyzed on descriptive and interpretative levels using a fishbone schema to categorize the data. Group interviews (LOPIR) were formed to create descriptive coding before the generated codes were categorized based on the relationship between codes and the underlying meaning across codes. From these sessions, we identified a framework, coded the qualitative data, used codes to aggregate related data, and categorized the verbal data for further classification and summarization in a fishbone schema (Figure 2). The data were sorted into the following 4 categories: material, method, human, and mechanical factors. Material factors included obscure physician checklists (including EPSDT forms and pediatric work sheets), method factors included inadequate training for residents and poor time management, human factors included physicians not ordering required items or the occurrence of miscommunications between physicians and nurses, and mechanical factors included clumsy screening tools or a lack of familiarity with the EHR system.

Figure 2. Qualitative findings from the preintervention assessment classified and summarized using in a fishbone schema. EPSDT, Early Periodic Screening, Diagnosis, and Treatment; FHC, Family Health Center.



Development and Description of the Intervention

After consideration of these potential barriers, interventional strategies to improve screening rates were determined in the LOPIR assessment meetings that were held 6 times. These findings were presented 4 times in the grand rounds and discussed with all physicians and responsible medical staff in the UPMC Shadyside FHC. Based on this process, we decided to implement the interventions summarized in Table 5.

Statistical Analysis of the Intervention

We assessed if there was a change in delivery of the preventive services from the preintervention chart review to the postintervention chart review. We used R statistical software version 3.2.1 to calculate descriptive statistics for the preintervention and postintervention quantitative data and used the independent 2-sample Z-test of proportions, with Yates' correction for continuity (2-sided).^{32,33} All *P* values <0.05 were considered statistically significant. Power analysis was implemented to compute the ideal sample size of each group, and effect size (Cohen's *h*) was calculated to detect the effect retrospectively. Cohen³⁴ reported descriptive interpretations of Cohen's *h* and values of 0.2, 0.5, and 0.8 were considered as low, medium and large effect size, respectively.

Postintervention Qualitative Assessment

Regarding the postintervention qualitative assessment, we discussed the following clinical questions by using an interview guide during the group interviews and key informant interviews: "What interpretations can be made from the postintervention data?", "Describe the differences in implementing screenings between pre- and postintervention," "What are the potential barriers to improvement?", and "What are the ideas to improvement?" Based on a review of the results, all participants agreed that "There was an overall improvement in screening rates." The nurses mentioned in key informant interviews that "User-friendly materials and EHRs were helpful in performing the screenings," "Some equipment, such as audiometer, were not child-friendly," and "Venipunctures in children were challenging." Furthermore, some participants in the group interviews mentioned that "Some screening rates did not improve as much as expected." Regarding improvement, there was consensus that the anemia and lead test confirmed rates still required improvement. These qualitative data were collected from field notes and observations.

Postintervention Qualitative Data Analysis

For the postintervention qualitative analysis, we used the process of immersion/crystallization in-

Table 5. Descriptions of Interventions to Improve Early Periodic Screening, Diagnosis, and Treatment

Material factors

EPSDT form revision: the original form was created for billing purposes and was attached to a file before a consultation. We simplified the form and added a reminder function.

Pediatric worksheet revision: this was a thorough checklist for physicians to use during well-child visits, and included history, physical examination, vaccine information, and screening required for each age-group. We emphasized the required screening at the bottom of the sheet to focus the physician's attention.

Method factors

Documentation in EHRs: we met with staff, including nurses, and stressed the importance of proper documentation, emphasizing that this should take place even when screening for anemia, lead, vision, or hearing was unsuccessful.

Human factors

Presentations at grand rounds: to improve awareness, we intermittently presented at these rounds to remind physicians and staff of the screening required at each age.

Posters in examination rooms: posters were put on the walls of each examination room to act as a reminder to physicians, nurses, and parents of the required screening. It was hoped that this would help parents to remind physicians or nurses to implement screenings that were overlooked.

Mechanical factors

Screening manual: well-child screening manuals were put on the walls of physicians' rooms showing the screening to be ordered in EHRs. The manual included each item in order.

Order sets in EHRs: user-friendly ordering sets were created for use by physicians, including for oral health screening.

EPSDT, Early Periodic Screening, Diagnosis, and Treatment; EHRs, electronic health records.

volving carefully repeated reading to immerse the analysts into the data to identify factors to explain the postintervention results.²⁵ We focused this assessment on factors that did not improve during the intervention. Each of these was discussed during the group interviews (LOPIR) and with the key informant participants. The interview data were segregated into 2 categories: lessons learned and barriers to further improvement. The lessons learned included the use of physician cues to improve screening rates, the importance of user-friendly materials and EHRs, and potentially effective implementation of interventions to multiple screenings. The barriers to improvement included difficulties in providing vision and hearing screening among younger children and difficulties in venipuncture of children.

These data were summarized using an editing approach, as the findings were topic-specific and amenable to this approach.^{35–38}

Results

The breakdown of children by EPSDT age-group is summarized in Table 3, demonstrating that the age-groups were evenly distributed. These age-groups were created based on Medicaid, but not medical reasons.²⁹ Data from these groups were used for prequantitative and postquantitative assessments. In total, 12 individuals participated in 22 group interviews and 3 key informant interviews for prequalitative and postqualitative assessments.

Effect of the Intervention

The intervention results are summarized in Table 6, where the rate of ordering or performing anemia, lead, vision and hearing tests are recorded as “Ordered” and the rate of confirmed results are recorded as “Confirmed.” For development screening and oral health screening or referral, the simple rate is given. The proportions and 95% confidence intervals (CIs) for both preintervention and postintervention are shown, together with *P* values. All service deliveries improved preintervention to postintervention. The preintervention-postintervention comparisons showed statistical improvements that were significant at *P* value <0.05 except for development screening, anemia test confirmed rate, and lead test confirmed rate. With regard to the power analysis, development screening and both ordered and confirmed rates of anemia and

Table 6. Quantitative Findings Based on the Preintervention and Postintervention Assessments using Chart Reviews

Screenings	Proportions, % (n)		95% CI		<i>P</i> value	Effect Size	Ideal Sample Size	
	Preintervention	Postintervention	Preintervention	Postintervention			Preintervention	Postintervention
Development	63 (115/183)	73 (109/149)	0.55–0.70	0.65–0.80	.060	0.21	380	310
Anemia	Ordered 50 (8/16)	83 (15/18)	0.24–0.75	0.59–0.96	.035	0.72	29	32
	Confirmed 31 (5/16)	67 (12/18)	0.11–0.59	0.41–0.87	.086	0.74	239	269
Lead	Ordered 18 (9/49)	43 (16/37)	0.09–0.32	0.27–0.61	.023	0.55	60	45
	Confirmed 59 (29/49)	65 (24/37)	0.44–0.73	0.47–0.80	.755	0.12	1194	901
Oral health	79 (88/131)	62 (82/89)	0.58–0.75	0.84–0.97	<.001	0.65	50	34
Vision	Ordered 22 (53/85)	06 (45/50)	0.51–0.73	0.78–0.97	100	0.68	49	29
	Confirmed 58 (49/85)	82 (41/50)	0.46–0.68	0.69–0.91	.007	0.53	77	45
Hearing	Ordered 64 (54/85)	92 (46/50)	0.52–0.74	0.81–0.98	>.001	0.71	46	27
	Confirmed 54 (46/85)	82 (41/50)	0.43–0.65	0.69–0.91	.002	0.61	58	34

CI, confidential interval.

lead tests were calculated to be a less than ideal sample size, assuming an α level of 0.05 (2-sided) and power of 80%. Effect size (Cohen's h) revealed greater than medium effect size ($h =$ greater than 0.50) except for development screening and lead test confirmed rates.³⁴

Discussion

This study aimed to assess the screening rates, interventions for improvement, and barriers to improved outcomes for well-child visits at UPMC Shadyside FHC. Our study revealed 4 major findings. First, preintervention qualitative analysis identified multiple potential barriers to improvement. During trial preparation, these were sorted and classified before the intervention. A plan to improve compliance with preintervention screening requirements was achieved using a fishbone schema (Figure 2). Second, based on the intervention, there was clinically meaningful and statistically significant improvement preintervention to postintervention in the anemia and lead test ordered rates, ordered and confirmed rates for vision and hearing assessment, and oral health screening and referral rates. Third, there were no statistically significant improvements in development screening, anemia test confirmed rate, and lead test confirmed rate; however, the lack of significant changes may be simply because of insufficient sample size. Results of the development and lead test confirmed rates were consistent with low effect size, that is, small effect. Fourth, the postintervention qualitative assessment disclosed potentially effective implementation of interventions to multiple screenings and barriers to improvement, including difficulties in providing vision and hearing screening in younger children and difficulties in venipuncture of children. These findings were leveraged for further practice improvement.

Moving forward, improvements are required in the process of venipuncture for children and more child-friendly tools should be considered for use in screening for vision and hearing problems. However, after completing the baseline mixed methods trial, the procedures prompted further continuous quality improvement activities that have been implemented to maintain the improved rates or provide a solution to these problems as LOPIR projects at UPMC Shadyside FHC.

For example, one project aimed to improve anemia screening, with changes made to pediatric

worksheets (introducing a flowchart for managing abnormal results), and introduction of fingerstick hemoglobin testing for use by FHC nurses. Based on 190 chart reviews between 2011 and 2013, these interventions resulted in improved rates for test ordered and test results.³⁹ In another intervention, to improve vision screening, the quicker and more child-friendly Spot Vision Screener was used. Based on 207 chart reviews between 2013 and 2014, this screener improved the successful completion rate for vision screening.⁴⁰ Finally, an intervention using a more child-friendly manual audiometer with headphones has been implemented for screening hearing problems. Based on 172 chart reviews between 2014 and 2015, this has resulted in more marginal improvements in test ordered, test attempts, and test results among children aged 3 years.⁴¹ These subsequent studies suggest that an additional value of our mixed methods interventional trial was the development of infrastructure and physician interest in further quality improvement.

As per Van Cleave et al's²² systematic review of interventions to improve the quality of screening after an intervention, a modest improvement is typical. The current research illustrates similar findings despite the differences across and within studies of the systematic review.²² To our knowledge, no previous research has used such a systematic mixed methods intervention to collect a preintervention qualitative baseline assessment, quantitative preintervention/postintervention screening data, and a postintervention qualitative assessment. We conducted a multifaceted intervention that may be generally more effective than a single intervention. Concurrent multiple screenings and interventions may have produced a synergistic effect.

Relative to future directions, it seems there has been no systematic approach to examine which elements of a multifaceted intervention provide the greatest benefit or why similar interventions perform better in some practices than others. This highlights the need for further research to understand whether some interventions are more effective than others and why.²²

On a methodologic note, integrating the qualitative preintervention assessment, the quantitative preintervention/postintervention findings, and the qualitative postintervention assessment provided a robust understanding of the overall quality im-

provement process. The baseline qualitative preintervention assessment helped identify problems with screening and barriers for further improvement. The qualitative postintervention assessment helped clarify why the intervention was not as effective for certain services. These findings suggest the utility of mixed methods interventional designs for other quality improvement projects in other settings.

Limitations

Our study has 6 limitations. First, it was implemented in a single facility; therefore, the results should be generalized with caution. Second, the chart reviews were conducted by multiple reviewers without assessing inter-rater reliability, which could introduce bias in favor of the effectiveness of the intervention. Third, qualitative data were not collected from patients or their proxies, and this might have precluded further ideas for interventions. Fourth, the data collection occurred under constraints of time and resources during a fixed period and precluded achievement of a sample size sufficient for detecting a difference for development and confirmed rates of anemia and lead tests. Fifth, there was a limited number of patients included per EPSDT-defined age range; relatively small sample sizes for some comparisons, for example, confirmed rates of anemia and lead tests could render those estimates less stable. Sixth, the screening rates that revealed statistical improvement may be attributed to low preinterventional screening rates; however, these results none the less suggest that multifaceted, practice-tailored interventions with ongoing outcome assessment may be effective.²²

Few studies have used a mixed methods intervention theory. In this study, the integrated analysis facilitated an interpretation of the quantitative and qualitative results more robust than if they had been examined separately without integration (Figure 1).⁴²

Conclusion

Although several barriers to further improvement were identified, our quality improvement approach resulted in enhanced screening rates. This study adds to the literature on using FOCUS-PDSA quality improvement theory to enhance the delivery of preventive services in family medicine. Pre-

vious studies have introduced a variety of interventions and outcomes to prove efficacy by using the improvements in quantitative data. As illustrated here, the qualitative data obtained by means such as group interviews and key informant interviews that were integrated with the measurements in change in services delivered provided a complementary and improved overall understanding. This reiterates the utility of mixed methods for use by clinicians, researchers, or policy makers who wish to improve the quality of patient care.²² We hope that our findings and methodology will help quality improvement-focused physicians develop a better understanding of barriers to patient care and lead to improved patient outcomes.

For their assistance with the collection of data, we acknowledge the following: Lori A Stiefel, MD; Jacqueline S Weaver-Agostoni, DO, MPH; Vincent Vargas, MD; Sawsan Jawad, MD; Josefina Paderes, MD; and Alaa About Hosn, MD.

To see this article online, please go to: <http://jabfm.org/content/31/4/558.full>.

References

1. Gitterman BA, Flanagan PJ, Cotton WH, et al. Poverty and child health in the United States. *Pediatrics* 2016;137:e20160339.
2. Hagan JF, Judith SS, Paula MD. Bright futures: guidelines for health supervision of infants, children, and adolescents, 3rd ed. Elk Grove Village, IL: American Academy of Pediatrics; 2007.
3. Frankenburg WK, North Jr AF. A Guide to screening for the Early and Periodic Screening, Diagnosis and Treatment Program (EPSDT) under Medicaid. Washington DC: US Department of Health, Education, and Welfare; 1974.
4. Irwin RH, Conroy-Hughes R. EPSDT impact on health status: estimates based on secondary analysis of administratively generated data. *Med Care* 1982; 20:216–34.
5. Centers for Medicare & Medicaid Services. EPSDT—a guide for states: coverage in the Medicaid benefit for children and adolescents; 2014. Available from: https://www.medicaid.gov/medicaid/benefits/downloads/epsdt_coverage_guide.pdf. Accessed October 1, 2016.
6. Levinson DR, General I. Most Medicaid children in nine state are not receiving all required preventive screening services. United States Department of Health and Human Services, Office of Inspector General; 2010.
7. US Preventive Services Task Force. Screening for speech and language delay in preschool children: recommendation statement. *Pediatrics* 2006;117: 497–501.

8. US Preventive Services Task Force. Screening for iron deficiency anemia—including iron supplementation for children and pregnant women: Recommendation statement. *Am Fam Physician* 2006;74:461–4.
9. Siu AL. Screening for iron deficiency anemia in young children: USPSTF Recommendation Statement. *Pediatrics* 2015;136.4:746–2.
10. US Preventive Services Task Force. Screening for elevated blood lead levels in children and pregnant women. *Pediatrics* 2006;118:2514–8.
11. Calonge NUS. Preventive Services Task Force. Prevention of dental caries in preschool children: recommendations and rationale. *Am J Prev Med* 2004;26:326–9.
12. Moyer VA. Prevention of dental caries in children from birth through age 5 years: USPSTF statement. *Pediatrics* 2014;133.6: 1102–11.
13. US Preventive Services Task Force. Screening for visual impairment in children younger than age 5 years: recommendation statement. *Ann Fam Med* 2004;2:263–6.
14. O'maha LM, Isaacs S, Chambers LW. Follow-up of participants in a preschool hearing screening program in child care centres. *Can J Public Health* 1992;83.5: 375–8.
15. Bright Futures Steering Committee, Medical Home Initiatives for Children With Special Needs Project Advisory Committee. Identifying infants and young children with developmental disorders in the medical home: an algorithm for developmental surveillance and screening. *Pediatrics* 2006;118:405–20.
16. American Academy of Pediatrics, Committee on Nutrition. Iron deficiency. In: Kleiman RE, editor. *Pediatric nutrition handbook* (5th ed). Elk Grove Villag, IL: American Academy of Pediatrics; 2004: P. 299–312.
17. American Academy of Pediatrics Committee on Environmental Health. Lead exposure in children: prevention, detection, and management. *Pediatrics* 2005;116:1036–46.
18. American Academy of Pediatric Dentistry Council on Clinical Affairs. Policy on the dental home. In: *Oral health policies reference manual 2005–2006*. Chicago, IL: American Academy of Pediatric Dentistry; 2004;18–9.
19. Dela Cruz GG, Rozier RG, Slade G. Dental screening and referral of young children by pediatric primary care providers. *Pediatrics* 114:e642–52, 2004.
20. Harlor AD, Bower C. Hearing assessment in infants and children: recommendations beyond neonatal screening. *Pediatrics* 2009;124:1252–63.
21. Advisory Committee on Childhood Lead Poisoning Prevention. Recommendations for blood lead screening of young children enrolled in Medicaid: targeting a group at high risk. *MMWR Recomm Rep* 2000;49:1–13.
22. Van Cleave J, Kuhlthau KA, Bloom S, et al. Interventions to improve screening and follow-up in primary care: a systematic review of the evidence. *Acad Pediatr* 2012;12:269–82.
23. Creswell JW. *A concise introduction to mixed methods research*. Sage Publications; 2014.
24. Creswell JW. *Qualitative inquiry and research design: Choosing among five approaches*. 3rd ed. Thousand Oaks, CA: SAGE Publications; 2013.
25. Borkan JM. *Immersion/crystallization: doing qualitative research*. Crabtree BF, Miller WL, editors. Thousand Oaks, CA: SAGE Publications; 1999; P. 179–94.
26. Kibbe DC, Bentz E, McLaughlin CP. Continuous quality improvement for continuity of care. *J Fam Pract* 1993;36:304–9.
27. Palinkas LA, Horwitz SM, Green CA, Wisdom JP, Duan N, Hoagwood K. Purposeful sampling for qualitative data collection and analysis in mixed method implementation research. *Adm Policy Ment Health* 2015;42:533–44.
28. Keystone First: Pennsylvania's Early and Periodic Screening, Diagnosis and Treatment (EPSDT) Program periodicity schedule and coding matrix; 2015. Available from: <https://www.keystonefirstpa.com/pdf/provider/resources/epsdt/periodicity-schedule.pdf>. Accessed August 23, 2016.
29. Pennsylvania's Early and Periodic Screening, Diagnosis and Treatment (EPSDT) program age range requirements for screening visits desk guide; 2008. Available from: http://www.dhs.pa.gov/cs/groups/public/documents/communication/s_002296.pdf. Accessed October 2017.
30. Simasek M, Ballard SL, Phelps P, et al. Meeting resident scholarly activity requirements through a longitudinal quality improvement curriculum. *J Grad Med Educ* 2015;7:86–90.
31. Gill P, Stewart K, Treasure E, Chadwick B. Methods of data collection in qualitative research: interviews and focus groups. *Br Dent J* 2008;204:291–5.
32. The R Project for Statistical Computing Available from: <https://www.r-project.org/>. Accessed August 12, 2015.
33. De Muth JE. *Basic statistics and pharmaceutical statistical applications*. Boca Reton, FL: CRC Press; 2014.
34. Cohen J. *Statistical power analysis for the behavioral sciences*. 2nd ed. New York, NY: Routledge; 1988.
35. Creswell JW. *A concise introduction to mixed methods research*. Thousand Oaks, CA: SAGE Publications; 2014.
36. Crabtree BF, Miller WL. *Doing qualitative research*. London, UK: SAGE Publications; 1999.
37. Venkatesh V, Brown SA, Bala H. *Bridging the qualitative-quantitative divide: Guidelines for conducting*

- mixed methods research in information systems. *MIS Quarterly* 2013;37.1:21–54.
38. Ivankova NV. *Mixed methods applications in action research: from methods to community action*. Thousand Oaks, CA: SAGE Publications; 2015.
 39. Trinidad K, Simasek M. Screening for iron deficiency anemia in children ages 9 months to 2 years at UPMC Shadyside Family Health Center. Presented at Research Day 2015. Pittsburgh, PA.
 40. Khan N, Simasek M, Stiefel L, Weaver-Agostoni J. Improving the vision screening in children at the UPMC Shadyside Family Health Center. Presented in poster, FMEC 2015. Denver, MA.
 41. Sidelko D, Simasek M, Stiefel L, Weaver-Agostoni J. Improving the hearing screening process in children at the UPMC Shadyside Family Health Center. Presented in poster, FMEC 2015. Denver, MA.
 42. Guetterman TC, Fetters MD, Creswell JW. Creswell. Integrating quantitative and qualitative results in health science mixed methods research through joint displays. *Ann Fam Med* 13:554–61, 2015.