

BRIEF REPORT

Eosinophilic Gastroenteritis Presenting with Severe Anemia and Near Syncope

Nneka Ekunno, DO, MPH, Kirk Munsayac, DO, Allen Pelletier, MD,
and Thad Wilkins, MD

Eosinophilic gastrointestinal disorders or eosinophilic digestive disorders encompass a spectrum of rare gastrointestinal disorders that includes eosinophilic esophagitis, eosinophilic gastroenteritis, and eosinophilic colitis. Eosinophilic gastroenteritis is a rare inflammatory disease characterized by eosinophilic infiltration of the gastrointestinal tract. The clinical manifestations include anemia, dyspepsia, and diarrhea. Endoscopy with biopsy showing histologic evidence of eosinophilic infiltration is considered definitive for diagnosis. Corticosteroid therapy, food allergen testing, elimination diets, and elemental diets are considered effective treatments for eosinophilic gastroenteritis. The treatment and prognosis of eosinophilic gastroenteritis is determined by the severity of the clinical manifestations. We describe a 24-year-old woman with eosinophilic gastroenteritis presenting as epigastric pain with a history of severe iron deficiency anemia, asthma, eczema, and allergic rhinitis, and we review the literature regarding presentation, diagnostic testing, pathophysiology, predisposing factors, and treatment recommendations. (J Am Board Fam Med 2012;25:913–918.)

Keywords: Case Reports, Eosinophilic Gastroenteritis, Gastrointestinal Disorders

A 24-year-old nulliparous African-American woman was admitted after an episode of near syncope associated with 2 days of fatigue and dizziness. She reported gradual onset of dyspepsia over 2 to 3 months. She denied nausea, vomiting, menorrhagia, polymenorrhea, diarrhea, hematemesis, melena, or hematochezia. Her medical history was significant for allergic rhinitis, eczema, and asthma. Her surgical history was negative. She denied using tobacco or illicit drugs. She drank approximately 1 to 2 beers per month. Her family history was significant for a father with asthma and hypertension and a mother with hypertension. Her medications included inhaled fluticasone, an albuterol metered-dose inhaler, a Flovent inhaler, loratadine, and ranitidine.

During examination, her height was 62 inches, weight 117 lb, and body mass index 21.44 kg/m². Her heart rate was 111 beats per minute, blood pressure 121/57 mm Hg, respiratory rate 20 breaths per minute, and oral temperature of 98.6°F. She appeared acutely ill and lethargic. She was oriented to person, place, and time. She had pallor of the conjunctiva. Cardiovascular, respiratory, musculoskeletal, and neurological examinations were normal. Her abdomen was soft and nontender, without organomegaly. Rectal examination revealed brown stool that was hemoccult negative.

Initial laboratory tests revealed a hemoglobin level of 5.1 g/dL (normal range, 12.0–16.0 g/dL), a hematocrit level of 17.1% (normal, 37.0% to 47.0%), a mean corpuscular volume of 66.9 fL (normal, 80.0–98.0 fL), a red blood cell distribution width of 31.1%F (normal, 11.5–18.0%F), and a platelet count of 921,000/mm³ (normal, 150,000–400,000/mm³). The white blood cell differential included 82% neutrophils, 5% lymphocytes, 5% monocytes, 6% eosinophils, and 2% basophils. Human chorionic gonadotropin test was negative. Ferritin level was 2.3 ng/mL (normal, 10.00–291.00 ng/mL), iron level was 11 mcg/dL (normal, 50–175 µg/dL), and total iron-binding capacity was 404 µg/dL (normal, 250–450 µg/dL).

This article was externally peer reviewed.

Submitted 14 September 2011; revised 12 December 2011; accepted 19 December 2011.

From the Department of Family Medicine, Georgia Health Sciences University, Augusta, GA.

Funding: none.

Conflict of interest: none declared.

Corresponding author: Thad Wilkins, MD, Department of Family Medicine, Medical College of Georgia, Georgia Health Sciences University, 1120 Fifteenth Street, HB-4032, Augusta, GA 30912 (E-mail: twilkins@georgiahealth.edu).

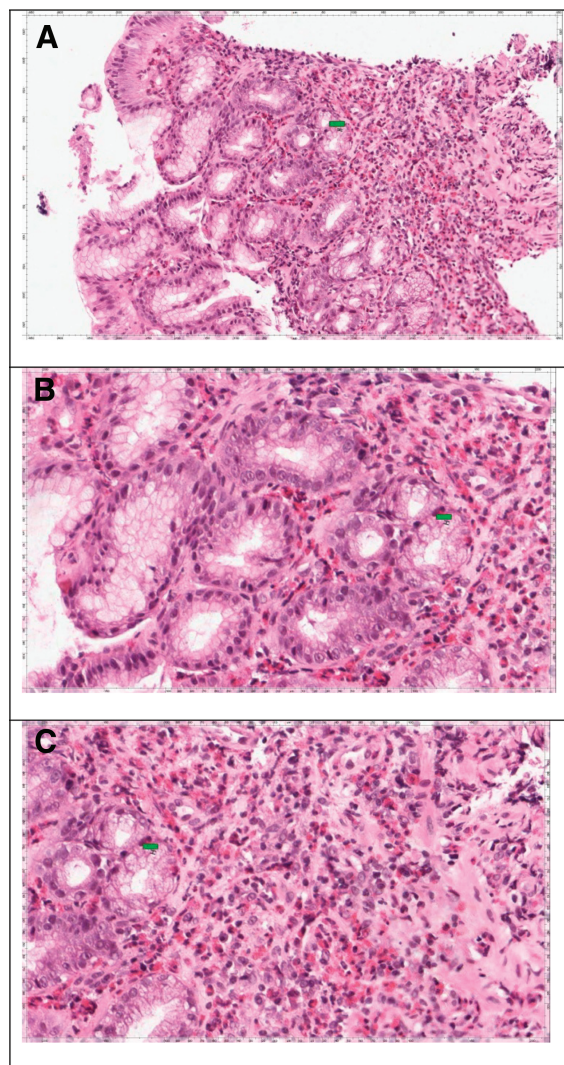
International normalized ratio was 1.0. She was admitted for symptomatic anemia and transfused with 4 U packed red blood cells. After the transfusion, her hemoglobin level was 12 g/dL. The patient was discharged in stable condition and was seen 1 week later by a hematologist, who confirmed the diagnosis of severe iron-deficiency anemia, and oral iron replacement therapy was initiated.

The patient returned 1 month later, complaining of epigastric pain, nausea, vomiting, and diarrhea. She reported several days of watery diarrhea and complained of anorexia. She reported one episode of hematemesis. Stool samples were sent for culture, gram stain, and examination for ova and parasites, and the stool studies were negative. After several days, abdominal pain persisted and omeprazole was added to the treatment regimen. An esophagogastroduodenoscopy was performed, which showed diffusely erythematous mucosa with an atrophic and nodular gastric mucosa extending into the first portion of the duodenum. Gastric biopsies were obtained for *Helicobacter pylori* and a pathology review. Omeprazole and ranitidine were continued. Gastric and duodenal biopsy results demonstrated diffuse glandular atrophy with dense eosinophilic infiltration (Figure 1). Pathology results were not consistent with celiac disease. She began taking oral prednisone with a slow taper over 6 weeks. A computed axial tomography scan of the abdomen and pelvis was obtained and was normal, without evidence of obstruction. She was referred to allergy/immunology. Subsequent immunoglobulin testing revealed a total immunoglobulin (Ig) E level of 1997 kU/L (reference range, 0.00–148.00 kU/L). Specific IgE subset testing showed elevated levels of IgE to eggs, milk, corn, oats, rice, wheat, peanuts, and soybeans. She began an elimination diet based on IgE testing but was noncompliant. She followed up after completing the course of prednisone, and her abdominal pain, diarrhea, nausea, and vomiting had completely resolved. Her hemoglobin remained stable.

Discussion

Eosinophilic gastrointestinal disorders or eosinophilic digestive disorders (EGIDs) encompass a spectrum of rare gastrointestinal disorders that includes eosinophilic esophagitis, eosinophilic gastroenteritis, and eosinophilic colitis.¹ These conditions are increasingly being recognized despite the varying clinical presentation, likely as a result of in-

Figure 1. Histology of gastric biopsies showing eosinophilic infiltration. A: The biopsy consists of gastric antral type mucosa that is heavily infiltrated by eosinophils. B: Many high-power fields contain more than 50 eosinophils. In addition, eosinophils infiltrate the glandular epithelium, and many of the glands appear damaged and exhibit reactive atypia. C: In addition, there appears to be loss of a significant number of glands. This may explain the atrophic appearance noted during endoscopic examination. The histologic features are characteristic of eosinophilic gastroenteritis.



creased diagnostic testing with esophagogastroduodenoscopy and colonoscopy, both with biopsy. Under normal, nonpathologic conditions, the gastrointestinal tract is the only nonhematopoietic organ to contain eosinophils, and the cecal and appendiceal regions have the highest concentrations.² It is postulated that exposure of the gastrointes-

Table 1. Classification of Eosinophilic Gastrointestinal Diseases

Type	Symptoms	Treatment
Mucosal	Anemia from iron deficiency or occult fecal blood loss, protein-losing enteropathy, and malabsorption, peripheral edema Most frequent type	Elimination diet Cromoglycate Ketotifen Glucocorticosteroids Azathioprine
Submucosal	Bowel wall thickening results in obstructive signs (colicky pain, nausea, vomiting) At risk for bowel obstruction	Montelukast Imatinib mesylate Omalizumab
Serosal	Associated with ascites, bloating, high peripheral eosinophilia, peritonitis Rarest form	Histamine 2 receptor blockers Proton pump inhibitors

Adapted from Refs. 6–9.

tinal mucosa to antigens promotes a Th-2-mediated immune response.³ Th-2 cells produce interleukin (IL)-4, IL-5 and IL-3 and promote the production of eosinophils as well as IgE.³

Eosinophilic esophagitis is the most commonly recognized EGID; most often it is seen in white men and presents with symptoms of gastroesophageal reflux disease. Eosinophilic gastroenteritis is a condition in which eosinophils infiltrate either the stomach or small bowel, and approximately 50% may have atopic disorders, food intolerances, or food allergies.⁴ Eosinophilic colitis is a rare condition that causes colonic eosinophilia, and patients typically present with abdominal pain, diarrhea, and weight loss.⁴ The clinical manifestations of EGIDs depend on which layer and which bowel segments are predominantly involved. EGID is classified into mucosal, submucosal, and serosal disease⁵ (see Table 1). Except for the serosal form, in which 75% of the patients are women aged 40 years or older, eosinophilic gastroenteritis is a predominantly male disorder that affects children as well as adults.¹⁰

Literature Search Strategy

We searched PubMed, Ovid, and Web of Knowledge using search terms *eosinophilic gastroenteritis* and *eosinophilic gastrointestinal disorders* but excluded the search terms *eosinophilic esophagitis*, *eosinophilic colitis*, and *allergic gastroenteropathy*. We found no randomized controlled trials or systematic review articles but found approximately 300 case reports and case series.

Clinical Symptoms

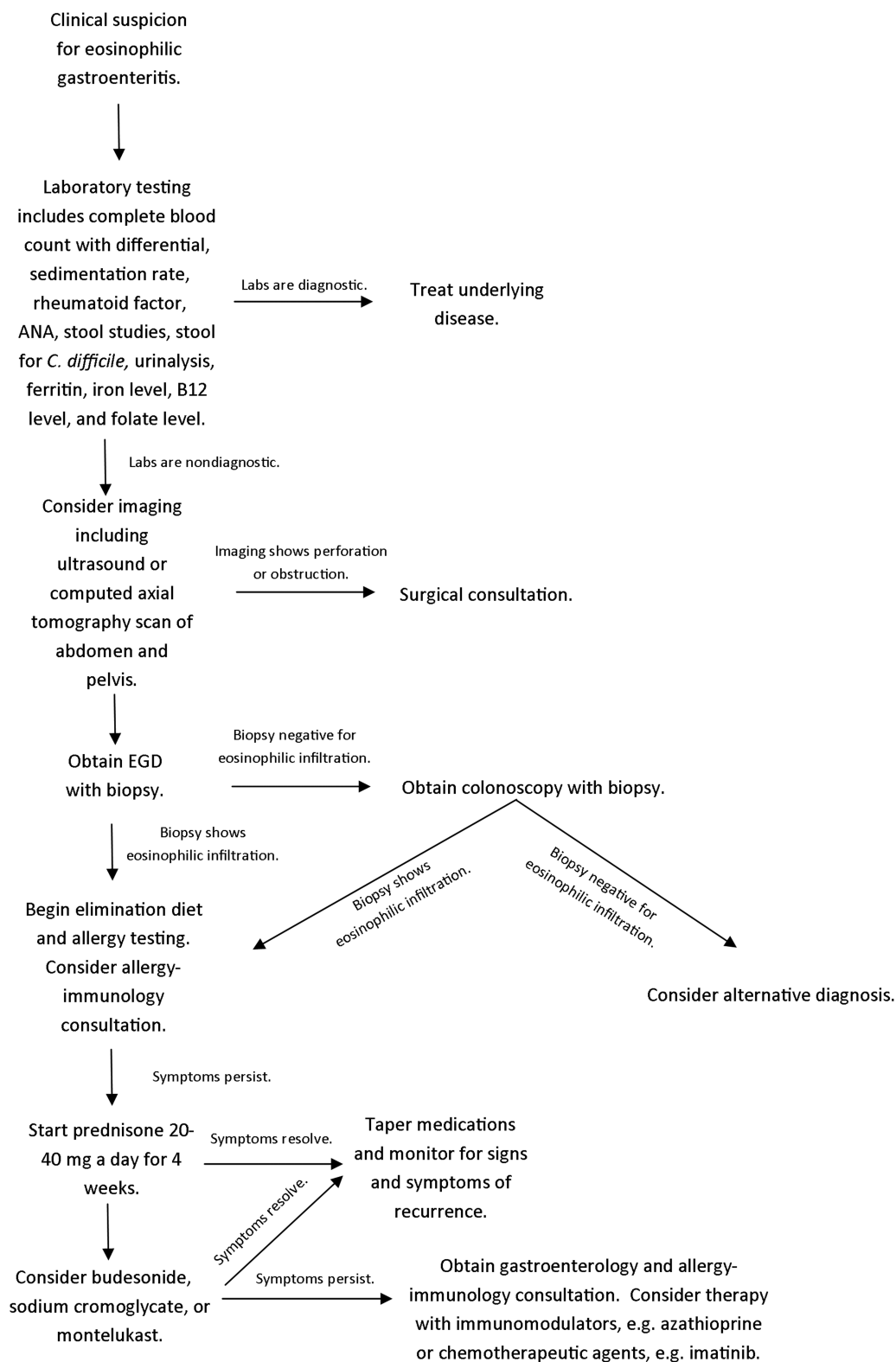
The most common symptoms of eosinophilic gastroenteritis include abdominal pain (90%), diarrhea (60%), vomiting (60%), nausea (50%), and abdominal distension (50%).^{11,12} Eosinophilic gastroenteritis affects all races and age groups, although in adults it usually presents during the third to fifth decades of life.¹³ It is necessary to rule out other causes of eosinophilia, such as drug reaction, parasitic infection, and cancer.¹⁴ The differential diagnosis of eosinophilic gastroenteritis includes disorders of eosinophilic infiltration, collagen vascular disorders,

Table 2. Differential Diagnosis for Eosinophilic Gastroenteritis

Systemic disorders	Vasculitis: Churg-Strauss syndrome or polyarteritis nodosa Connective tissue disease: scleroderma, dermatomyositis, eosinophilia-myalgia syndrome Others: idiopathic hypereosinophilia, mastocytosis, histiocytosis X, nonlipid histiocytosis, eosinophilic granuloma
Tumors	Carcinomas, lymphomas
Intestinal	Inflammatory bowel disorders Intestinal perforation
Food allergies	Cow milk enteropathy
Parasites	Parasites (<i>Ancylostoma caninum</i> , giardiasis, strongyloidosis, other zoonoses)
Toxins	Drugs (aspirin, sulfonamides, penicillin, cephalosporin, carbamazepine, azathioprine, L-tryptophan, and gold salts)

Adapted from Ref. 2.

Figure 2. Algorithm for the workup and treatment of eosinophilic gastroenteritis. ANA, antinuclear antibody.



inflammatory bowel disease, malignancies, medications (eg, enalapril), and hypereosinophilic syndrome (Table 2).

Diagnostic Testing

A clinical history of other atopic conditions such as asthma, atopic dermatitis, and food and environmental allergies should heighten suspicion for eosinophilic gastroenteritis. Peripheral eosinophilia and elevated IgE are suggestive findings of initial laboratory testing.^{3,15} Additional testing may include allergy evaluation by skin and serum radioallergen sorbent tests, albumin and protein levels, α -1 antitrypsin levels, and analysis of ascitic fluid for eosinophils.¹

Radiologic tests are nonspecific but may show varying degrees of inflammation such as mucosal thickening and irregularity. The most common computed tomography finding is nodular and irregular folds and thickening in the distal stomach and proximal small bowel.¹⁶ Abdominal ultrasound may detect ascites. Definitive diagnosis requires esophagogastroduodenoscopy with biopsy showing histologic evidence of eosinophilic infiltration (see Figure 2).

Therapeutic Options

Food allergy testing and elimination and elemental diets should be considered and often are performed before a trial of corticosteroids. Spontaneous remission may occur in up to 40% of patients.¹⁷ In pediatric cases of eosinophilic gastroenteritis, elimination diets have been beneficial, in some cases without a need for additional treatment, and may describe a subset of patients with allergic eosinophilic gastroenteritis.^{7,18,19} Corticosteroids are the mainstay of therapy, and most patients have symptomatic response. Symptom relief usually occurs within a few weeks of the initiation of treatment.^{16,20} Treatment with histamine H-1 receptor antagonists or mast cell-stabilizing drugs (eg, cromoglycate), has been described in previous studies and may be considered in patients who do not respond to or cannot tolerate corticosteroids. Montelukast, a selective and competitive leukotriene receptor antagonist, may be considered as a corticosteroid-sparing agent.^{16,21} Consultation with an allergist/immunologist or a gastroenterologist should be considered for patients with persistent symptoms despite an adequate trial of corticosteroids. Therapy with immunomodulators (eg, azathio-

prine) or chemotherapeutic agents (eg, imatinib) may be considered in patients with severe and unremitting symptoms. The natural course of the disease is uncertain and relapses are frequent; therefore, patients should be monitored after therapy has been initiated to reassess for symptom recurrence or complications. Surgery usually is not necessary but is sometimes needed in cases of intestinal obstruction or perforation.

Conclusions

Additional studies are needed to follow the natural history of this disorder. Randomized, control trials are needed to assess the effectiveness and safety of pharmacological and nonpharmacological therapies for eosinophilic gastroenteritis. Eosinophilic gastroenteritis is a chronic gastrointestinal disease with a variety of clinical presentations. A high degree of clinical suspicion is needed for accurate diagnosis. Oral corticosteroids are the mainstay of therapy.

References

1. Khan S, Orenstein SR. Eosinophilic gastroenteritis: epidemiology, diagnosis and management. *Paediatr Drugs* 2002;4:563–70.
2. Oh HE, Chetty R. Eosinophilic gastroenteritis: a review. *J Gastroenterol* 2008;43:741–50.
3. Shifflet A, Forouhar F, Wu GY. Eosinophilic digestive diseases: eosinophilic esophagitis, gastroenteritis, and colitis. *J Formos Med Assoc* 2009;108:834–43.
4. Alfadda AA, Storr MA, Shaffer EA. Eosinophilic colitis: epidemiology, clinical features, and current management. *Therap Adv Gastroenterol* 2011;4:301–9.
5. Yun MY, Cho YU, Park IS, Choi SK, Kim SJ, Shin SH, Kim KR. Eosinophilic gastroenteritis presenting as small bowel obstruction: a case report and review of the literature. *World J Gastroenterol* 2007;13:1758–60.
6. Siewert E, Lammert F, Koppitz P, Schmidt T, Mattern S. Eosinophilic gastroenteritis with severe protein-losing enteropathy: successful treatment with budesonide. *Dig Liver Dis* 2006;38:55–9.
7. Yan BM, Shaffer EA. Primary eosinophilic disorders of the gastrointestinal tract. *Gut* 2009;58:721–32.
8. Fenoglio LM, Benedetti V, Rossi C, et al. Eosinophilic gastroenteritis with ascites: a case report and review of the literature. *Dig Dis Sci* 2003;48:1013–20.
9. Klein NC, Hargrove RL, Sleisenger MH, Jeffries GH. Eosinophilic gastroenteritis. *Medicine (Baltimore)* 1970;49:299–319.

10. Straumann AM. Idiopathic eosinophilic gastrointestinal diseases in adults. *Best Pract Res Clin Gastroenterol* 2008;22:481–96.
11. Siewart E, Lammert F, Koppitz P, Schmidt T, Marten S. Eosinophilic gastroenteritis with severe protein-losing enteropathy: successful treatment with budesonide. *Dig Liver Dis* 2006;38:55–9.
12. Lee CM, Changchien CS, Chen PC, et al. Eosinophilic gastroenteritis: 10 years experience. *Am J Gastroenterol* 1993;88:70–4.
13. Lynbaek SA, Adamsen S, Aru A, Bergenfeldt M. Recurrent acute pancreatitis due to eosinophilic gastroenteritis. case report and literature review. *JOP* 2006;7:211–7.
14. Wolpin BM, Weller PF, Katz JT, Levy BD, Loscalzo J. Clinical problem solving. The writing on the wall. *N Engl J Med* 2009;361:1387–92.
15. Madhotra R, Eloubeidi MA, Cunningham JT, Lewin D, Hoffman B. Eosinophilic gastroenteritis masquerading as ampullary adenoma. *J Clin Gastroenterol* 2002;34:240–2.
16. Lin HH, Wu CH, Wu LS, Shyu RY. Eosinophilic gastroenteritis presenting as relapsing severe abdominal pain and enteropathy with protein loss. *Emerg Med J* 2005;22:834–5.
17. de Chambrun GP, Gonzalez F, Canva JY, et al. Natural history of eosinophilic gastroenteritis. *Clin Gastroenterol Hepatol* 2011;9:950–6 e1.
18. Chehade M, Magid MS, Mofidi S, Nowak-Wegrzyn A, Sampson HA, Sicherer SH. Allergic eosinophilic gastroenteritis with protein-losing enteropathy: intestinal pathology, clinical course, and long-term follow-up. *J Pediatr Gastroenterol Nutr* 2006;42:516–21.
19. Justinich C, Katz A, Gurbindo C, et al. Elemental diet improves steroid-dependent eosinophilic gastroenteritis and reverses growth failure. *J Pediatr Gastroenterol Nutr* 1996;23:81–5.
20. Khan S, Orenstein SR. Eosinophilic gastroenteritis. *Paediatr Drugs* 2002;4:563–70.
21. Schwartz DA, Pardi DS, Murray JA. Use of montelukast as steroid-sparing agent for recurrent eosinophilic gastroenteritis. *Dig Dis Sci* 2001;46:1787–90.